

Datasheet for ABIN4949055

Glypican 3 Protein (GPC3) (AA 25-559) (Fc Tag)**3** Images[Go to Product page](#)

Overview

Quantity:	100 µg
Target:	Glypican 3 (GPC3)
Protein Characteristics:	AA 25-559
Origin:	Cynomolgus
Source:	HEK-293 Cells
Protein Type:	Recombinant
Biological Activity:	Active
Purification tag / Conjugate:	This Glypican 3 protein is labelled with Fc Tag.
Application:	Functional Studies (Func)

Product Details

Sequence:	AA 25-559
Characteristics:	This protein carries a human IgG1 Fc tag at the C-terminus. The protein has a calculated MW of 87.5 kDa. GP3-C5256 may be cleaved into secrete GPC3, short propeptide (aa ?-559) & Fc tag, long propeptide (aa ?-559) & Fc tag. The protein migrates as 100 kDa (secrete GPC3 & propeptide & Fc tag), 58 kDa (long propeptide & Fc tag), 40 kDa (short propeptide & Fc tag) and 35 kDa Human IgG1 Fc fragment on a SDS-PAGE gel under reducing (R) condition.
Purity:	>90 % as determined by SDS-PAGE
Endotoxin Level:	Less than 1.0 EU per µg by the LAL method.

Target Details

Target:	Glypican 3 (GPC3)
Alternative Name:	Glypican 3 (GPC3 Products)
Background:	Glypican-3 (GPC3) is also known as Intestinal protein OCI-5, GTR2-2, MXR7, which belongs to the glypican family. Glypican 3 / GPC-3 is highly expressed in lung, liver and kidney. Glypican-3 inhibits the dipeptidyl peptidase activity of DPP4. Glypican-3 may be involved in the suppression/modulation of growth in the predominantly mesodermal tissues and organs, and also may play a role in the modulation of IGF2 interactions with its receptor and thereby modulate its function.
Molecular Weight:	38.1 kDa and 49.4 kDa
NCBI Accession:	XP_005594665
Pathways:	Glycosaminoglycan Metabolic Process

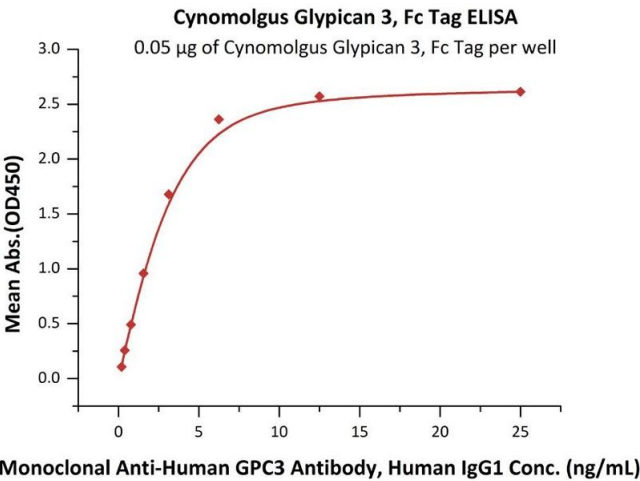
Application Details

Restrictions:	For Research Use only
---------------	-----------------------

Handling

Format:	Lyophilized
Buffer:	Tris with Glycine, Arginine and NaCl, pH 7.5
Handling Advice:	Please avoid repeated freeze-thaw cycles.
Storage:	-20 °C

Images



ELISA

Image 1. Immobilized Cynomolgus Glypican 3, Fc Tag (ABIN4949055, ABIN4949056) at 0.5 µg/mL (100 µL/well) can bind Monoclonal A GPC3 Antibody, Human IgG1 with a linear range of 0.2-3 ng/mL (Routinely tested).

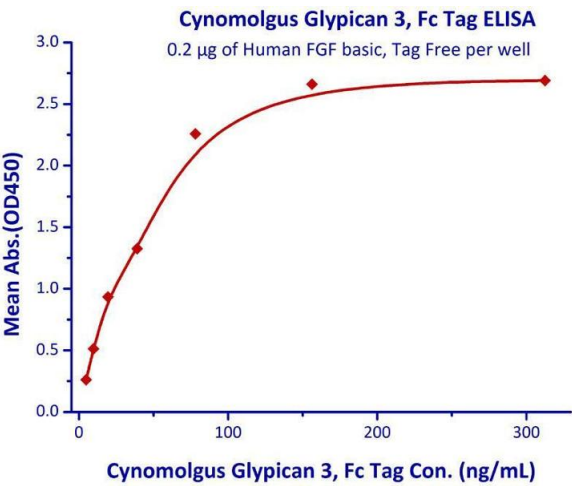
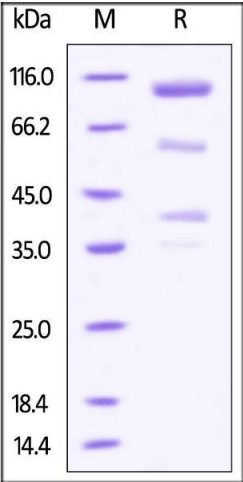


Image 2. Measured by its binding ability in a functional ELISA. Immobilized Human FGF basic, Tag Free with a linear range of 4.8-19.5 ng/mL.



SDS-PAGE

Image 3. Cynomolgus Glypican 3 / GPC3, Fc Tag on SDS-PAGE under reducing (R) condition. The gel was stained overnight with Coomassie Blue. The purity of the protein is greater than 90%.