



[Go to Product page](#)

Datasheet for ABIN4949103

## GREM1 Protein (AA 25-184) (His tag)

### 2 Images

#### Overview

Quantity:	100 µg
Target:	GREM1
Protein Characteristics:	AA 25-184
Origin:	Human
Source:	HEK-293 Cells
Protein Type:	Recombinant
Biological Activity:	Active
Purification tag / Conjugate:	This GREM1 protein is labelled with His tag.
Application:	Functional Studies (Func)

#### Product Details

Sequence:	AA 25-184
Characteristics:	This protein carries a polyhistidine tag at the C-terminus. The protein has a calculated MW of 20.2 kDa. The protein migrates as 28-35 kDa under reducing (R) condition (SDS-PAGE) due to glycosylation.
Purity:	>95 % as determined by SDS-PAGE.
Endotoxin Level:	Less than 1.0 EU per µg by the LAL method.

#### Target Details

Target:	GREM1
---------	-------

## Target Details

---

Alternative Name: Gremlin ([GREM1 Products](#))

---

Background: Gremlin is also known as Cysteine knot superfamily 1, BMP antagonist 1 (CKTSF1B1), DAN domain family member 2 (DAND2), Down-regulated in Mos-transformed cells protein (DRM), Increased in high glucose protein 2 (IHG-2), Cell proliferation-inducing gene 2 protein (PIG2) or Gremlin-1 (GREM1), which is highly expressed in small intestine, fetal brain and colon. Gremlin / GREM-1 interacts with SLIT1 and SLIT2 in a glycosylation-dependent manner. Gremlin may play an important role during carcinogenesis and metanephric kidney organogenesis, as a BMP antagonist required for early limb outgrowth and patterning in maintaining the FGF4-SHH feedback loop. Gremlin down-regulates the BMP4 signaling in a dose-dependent manner and acts as inhibitor of monocyte chemotaxis.

---

Molecular Weight: 20.2 kDa

---

NCBI Accession: [NP\\_037504](#)

---

Pathways: [Regulation of Muscle Cell Differentiation](#), [Tube Formation](#), [Maintenance of Protein Location](#)

---

## Application Details

---

Restrictions: For Research Use only

---

## Handling

---

Format: Lyophilized

---

Buffer: PBS, pH 7.4 with 1 mM EDTA

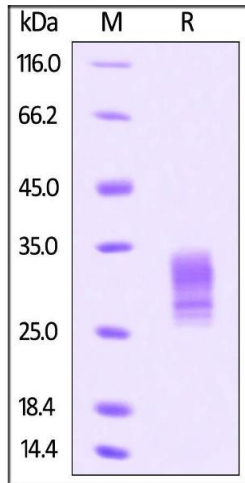
---

Handling Advice: Please avoid repeated freeze-thaw cycles.

---

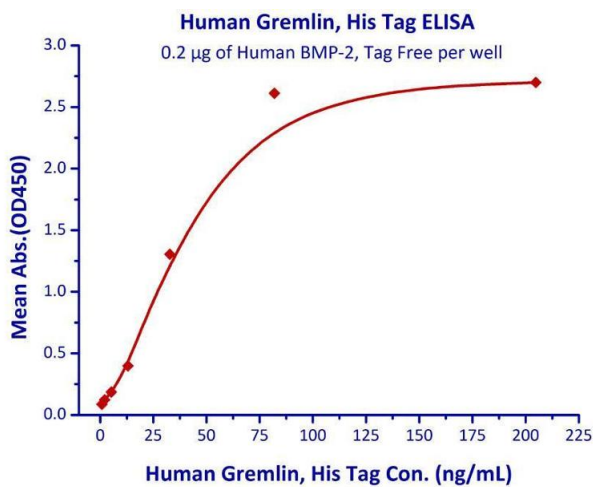
Storage: -20 °C

---



### SDS-PAGE

**Image 1.** Human Gremlin / GREM1, His Tag on SDS-PAGE under reducing (R) condition. The gel was stained overnight with Coomassie Blue. The purity of the protein is greater than 95%.



### Binding Studies

**Image 2.** Immobilized Human BMP-2, Tag Free with a linear range of 0.8-81.9 ng/mL.