



[Go to Product page](#)

Datasheet for ABIN4949141

ROR2 Protein (AA 34-403) (His tag)

1 Image

Overview

Quantity:	50 µg
Target:	ROR2
Protein Characteristics:	AA 34-403
Origin:	Human
Source:	HEK-293 Cells
Protein Type:	Recombinant
Purification tag / Conjugate:	This ROR2 protein is labelled with His tag.
Application:	Functional Studies (Func)

Product Details

Sequence:	AA 34-403
Characteristics:	This protein carries a polyhistidine tag at the C-terminus. The protein has a calculated MW of 43.1 kDa. The protein migrates as 55 kDa under reducing (R) condition (SDS-PAGE) due to glycosylation.
Purity:	>95 % as determined by SDS-PAGE.
Endotoxin Level:	Less than 1.0 EU per µg by the LAL method.

Target Details

Target:	ROR2
Alternative Name:	ROR2 (ROR2 Products)

Target Details

Background: Tyrosine-protein kinase transmembrane receptor ROR2 is also known as Neurotrophic tyrosine kinase, receptor-related 2 (NTRKR2), which belongs to the protein kinase superfamily and Tyr protein kinase family and ROR subfamily. ROR2 is a homodimer protein, which can binds YWHAB or interact with WTIP. ROR2 may be involved in the early formation of the chondrocytes. It seems to be required for cartilage and growth plate development.

Molecular Weight: 43.2 kDa

NCBI Accession: [NP_004551](#)

Pathways: [RTK Signaling](#), [WNT Signaling](#)

Application Details

Restrictions: For Research Use only

Handling

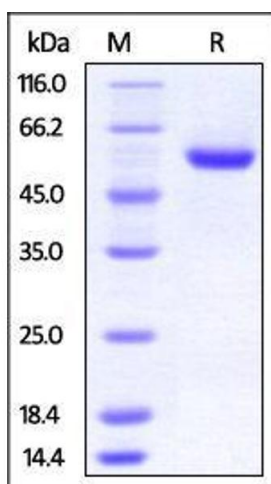
Format: Lyophilized

Buffer: PBS, pH 7.4

Handling Advice: Please avoid repeated freeze-thaw cycles.

Storage: -20 °C

Images



SDS-PAGE

Image 1. Human ROR2, His Tag on SDS-PAGE under reducing (R) condition. The gel was stained overnight with Coomassie Blue. The purity of the protein is greater than 95%.