



[Go to Product page](#)

Datasheet for ABIN4949159

## BTLA Protein (AA 30-176) (His tag)

### 2 Images

#### Overview

Quantity:	50 µg
Target:	BTLA
Protein Characteristics:	AA 30-176
Origin:	Mouse
Source:	HEK-293 Cells
Protein Type:	Recombinant
Biological Activity:	Active
Purification tag / Conjugate:	This BTLA protein is labelled with His tag.
Application:	Functional Studies (Func)

#### Product Details

Sequence:	AA 30-176
Characteristics:	This protein carries a polyhistidine tag at the C-terminus. The protein has a calculated MW of 18.6 kDa. The protein migrates as 30-45 kDa under reducing (R) condition (SDS-PAGE) due to glycosylation.
Purity:	>95 % as determined by SDS-PAGE.
Endotoxin Level:	Less than 1.0 EU per µg by the LAL method.

#### Target Details

Target:	BTLA
---------	------

## Target Details

Alternative Name: BTLA ([BTLA Products](#))

Background: B- and T-lymphocyte attenuator (BTLA) is also known as B- and T-lymphocyte-associated protein, CD antigen CD272. BTLA contains one Ig-like V-type (immunoglobulin-like) domain. As a lymphocyte inhibitory receptor, BTLA / CD272 inhibits lymphocytes during immune response. BTLA / CD272 can interact with tyrosine phosphatases PTPN6/SHP-1 and PTPN11/SHP-2, and interact with TNFRSF14/HVEM.

Molecular Weight: 18.6 kDa

UniProt: [Q32MV9](#)

Pathways: [Cancer Immune Checkpoints](#)

## Application Details

Restrictions: For Research Use only

## Handling

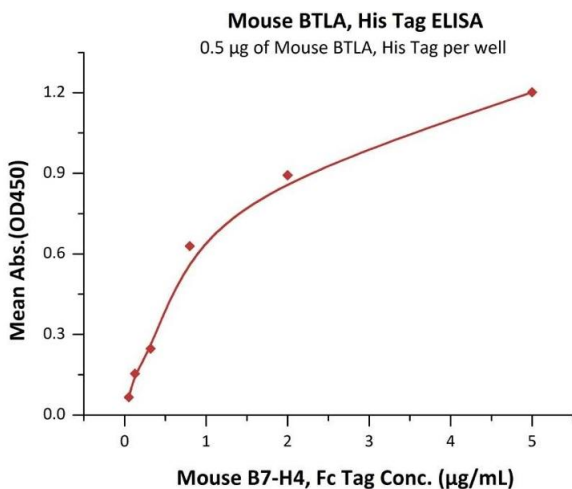
Format: Lyophilized

Buffer: PBS, pH 7.4

Handling Advice: Please avoid repeated freeze-thaw cycles.

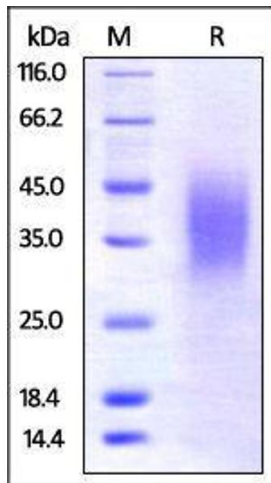
Storage: -20 °C

## Images



### ELISA

**Image 1.** Immobilized Mouse BTLA, His Tag (ABIN4949158, ABIN4949159) at 5 µg/mL (100 µL/well) can bind Mouse B7-H4, Fc Tag with a linear range of 0.05-0.8 µg/mL (QC tested).



### SDS-PAGE

**Image 2.** Mouse BTLA, His Tag on SDS-PAGE under reducing (R) condition. The gel was stained overnight with Coomassie Blue. The purity of the protein is greater than 95%.