



[Go to Product page](#)

Datasheet for ABIN4949162

CD3 epsilon Protein (CD3E) (AA 23-108) (Fc Tag)

2 Images

Overview

Quantity:	100 µg
Target:	CD3 epsilon (CD3E)
Protein Characteristics:	AA 23-108
Origin:	Mouse
Source:	HEK-293 Cells
Protein Type:	Recombinant
Purification tag / Conjugate:	This CD3 epsilon protein is labelled with Fc Tag.
Application:	Functional Studies (Func)

Product Details

Sequence:	AA 23-108
Characteristics:	This protein carries a human IgG1 Fc tag at the C-terminus. The protein has a calculated MW of 36 kDa. The protein migrates as 45 kDa under reducing (R) condition (SDS-PAGE).
Purity:	>95 % as determined by SDS-PAGE.
Endotoxin Level:	Less than 1.0 EU per µg by the LAL method.

Target Details

Target:	CD3 epsilon (CD3E)
Alternative Name:	CD3 epsilon (CD3E Products)
Background:	CD3e molecule, epsilon is also known as CD3E, is a T-cell surface single-pass type I membrane

Target Details

glycoprotein. CD3E contains 1 Ig-like (immunoglobulin-like) domain and 1 ITAM domain. CD3E, together with CD3-gamma, CD3-delta and CD3-zeta, and the T-cell receptor alpha/beta and gamma/delta heterodimers, forms the T cell receptor-CD3 complex. This complex plays an important role in coupling antigen recognition to several intracellular signal-transduction pathways. The genes encoding the epsilon, gamma and delta polypeptides are located in the same cluster on chromosome 11. The epsilon polypeptide plays an essential role in T-cell development. CD3E plays an essential role in T-cell development, and defects in CD3E gene cause severe immunodeficiency. CD3E gene has also been linked to a susceptibility to type I diabetes in women. CD3E has been shown to interact with TOP2B, CD3EAP and NCK2.

Molecular Weight: 36 kDa

UniProt: [P22646](#)

Pathways: [TCR Signaling](#), [CXCR4-mediated Signaling Events](#), [Ubiquitin Proteasome Pathway](#)

Application Details

Restrictions: For Research Use only

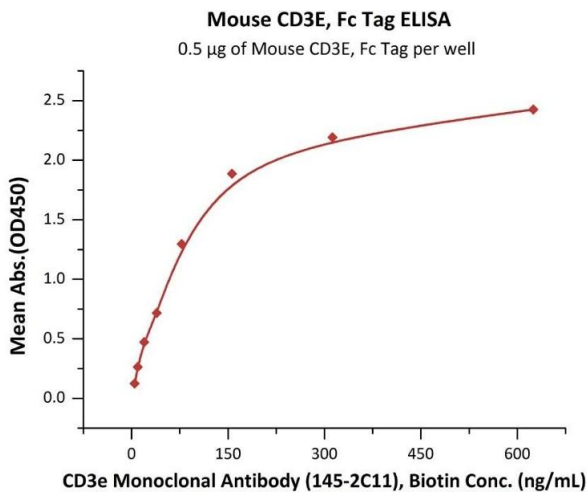
Handling

Format: Lyophilized

Buffer: Tris with Glycine, Arginine and NaCl, pH 7.5

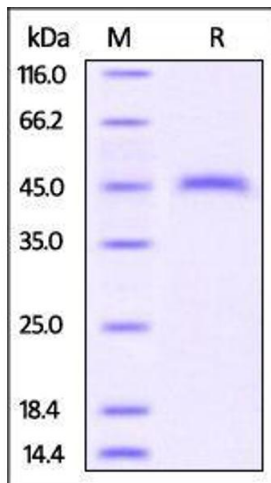
Handling Advice: Please avoid repeated freeze-thaw cycles.

Storage: -20 °C



ELISA

Image 1. Immobilized Mouse CD3E, Fc Tag (ABIN4949162, ABIN4949163) at 5 µg/mL (100 µL/well) can bind CD3e Monoclonal Antibody, Biotin with a linear range of 5-156 ng/mL (QC tested).



SDS-PAGE

Image 2. Mouse CD3 epsilon, Fc Tag on SDS-PAGE under reducing (R) condition. The gel was stained overnight with Coomassie Blue. The purity of the protein is greater than 95%.