

Datasheet for ABIN4949199

CTLA4 Protein (AA 36-161) (Fc Tag)**3** Images[Go to Product page](#)

Overview

Quantity:	100 µg
Target:	CTLA4
Protein Characteristics:	AA 36-161
Origin:	Rabbit
Source:	HEK-293 Cells
Protein Type:	Recombinant
Purification tag / Conjugate:	This CTLA4 protein is labelled with Fc Tag.
Application:	Functional Studies (Func)

Product Details

Sequence:	AA 36-161
Characteristics:	This protein carries a human IgG1 Fc tag at the C-terminus. The protein has a calculated MW of 40.3 kDa. The protein migrates as 50-55 kDa under reducing (R) condition (SDS-PAGE) due to glycosylation.
Purity:	>95 % as determined by SDS-PAGE.
Endotoxin Level:	Less than 1.0 EU per µg by the LAL method.

Target Details

Target:	CTLA4
Alternative Name:	CTLA-4 (CTLA4 Products)

Target Details

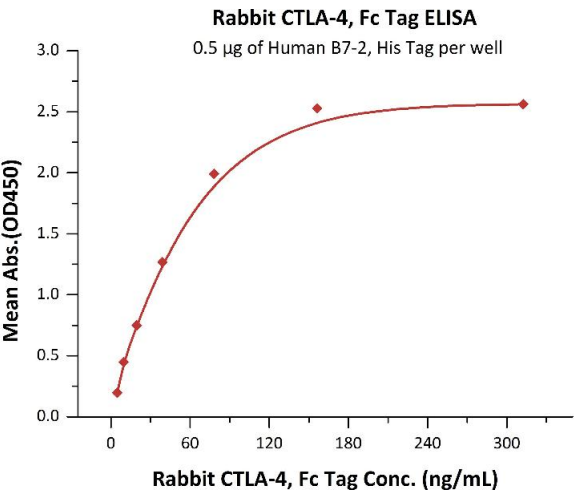
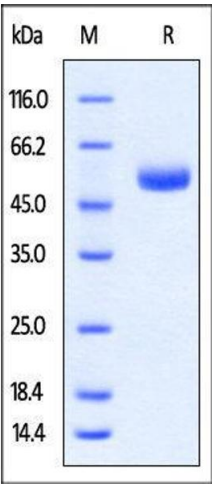
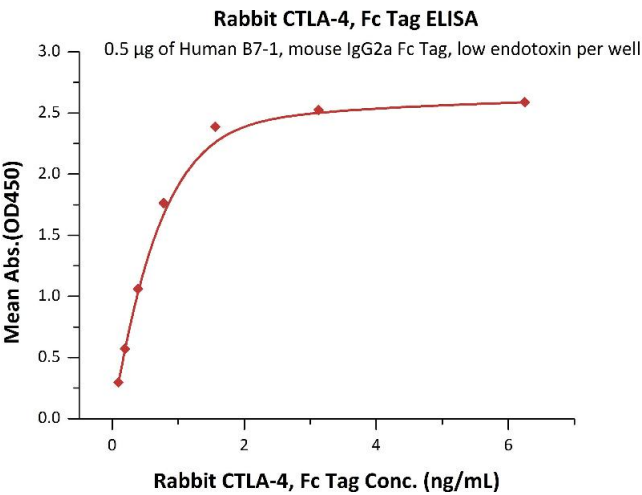
Background:	CTLA-4 (Cytotoxic T-Lymphocyte Antigen 4) is also known as CD152 (Cluster of differentiation 152), is a protein receptor that downregulates the immune system. CTLA4 is a member of the immunoglobulin superfamily, which is expressed on the surface of Helper T cells and transmits an inhibitory signal to T cells. The protein contains an extracellular V domain, a transmembrane domain, and a cytoplasmic tail. Alternate splice variants, encoding different isoforms. CTLA4 is similar to the T-cell co-stimulatory protein, CD28, and both molecules bind to CD80 and CD86, also called B7-1 and B7-2 respectively, on antigen-presenting cells. CTLA4 transmits an inhibitory signal to T cells, whereas CD28 transmits a stimulatory signal. Intracellular CTLA4 is also found in regulatory T cells and may be important to their function. Fusion proteins of CTLA4 and antibodies (CTLA4-Ig) have been used in clinical trials for rheumatoid arthritis.
Molecular Weight:	40.3 kDa
Gene ID:	18
Pathways:	Cancer Immune Checkpoints

Application Details

Restrictions:	For Research Use only
---------------	-----------------------

Handling

Format:	Lyophilized
Buffer:	Tris with Glycine, Arginine and NaCl, pH 7.5
Handling Advice:	Please avoid repeated freeze-thaw cycles.
Storage:	-20 °C



ELISA

Image 1. Immobilized Human B7-1, mouse IgG2a Fc Tag, low endotoxin (ABIN5674619,ABIN6253663) at 5 µg/mL (100 µL/well) can bind Rabbit CTLA-4, Fc Tag (ABIN4949198,ABIN4949199) with a linear range of 0.1-0.8 ng/mL (QC tested).

SDS-PAGE

Image 2. Rabbit CTLA-4 Protein, Fc Tag on SDS-PAGE under reducing (R) condition. The gel was stained overnight with Coomassie Blue. The purity of the protein is greater than 95%.

ELISA

Image 3. Immobilized Human B7-2, His Tag (ABIN2180619,ABIN2180618) at 5 µg/mL (100 µL/well) can bind Rabbit CTLA-4, Fc Tag (ABIN4949198,ABIN4949199) with a linear range of 5-78 ng/mL (Routinely tested).