

Datasheet for ABIN4949235

Recombinant anti-CA 19-9 antibody[Go to Product page](#)**1** Image

Overview

Quantity:	100 µg
Target:	CA 19-9
Reactivity:	Human
Host:	Rabbit
Antibody Type:	Recombinant Antibody
Clonality:	Monoclonal
Conjugate:	This CA 19-9 antibody is un-conjugated
Application:	Flow Cytometry (FACS), Immunofluorescence (IF), Immunohistochemistry (Paraffin-embedded Sections) (IHC (p))

Product Details

Immunogen:	Purified human protein used as the immunogen for the recombinant CA19-9 antibody.
Clone:	CA19-9-1390R
Isotype:	IgG kappa
Purification:	Protein A affinity

Target Details

Target:	CA 19-9
Alternative Name:	CA19-9 (CA 19-9 Products)
Background:	CA19-9, a carbohydrate epitope expressed on a high MW (>400 kDa) mucin glycoprotein, is a

Target Details

sialyl Lewisa structure which is synthesized from type 1 blood group precursor chains and is present in individuals expressing the Lewisa and/or Lewisb blood group antigens.

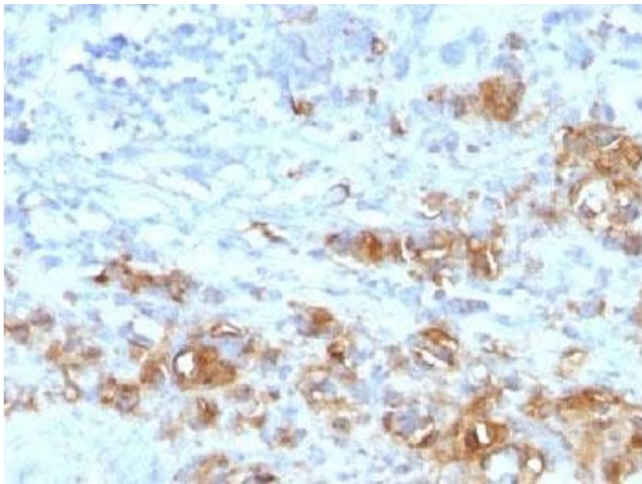
Application Details

Application Notes:	Optimal dilution of the recombinant CA19-9 antibody should be determined by the researcher. 1. The prediluted format is supplied in a dropper bottle and is optimized for use in IHC. After epitope retrieval step (if required), drip mAb solution onto the tissue section and incubate at RT for 30 min.\. Flow Cytometry: 2-4 µg/million cells in 0.1ml,Immunofluorescence: 5-10 µg/mL,Immunohistochemistry (FFPE): 5-10 µg/mL for 30 min at RT,Prediluted IHC only format: incubate for 30 min at RT (1)
Restrictions:	For Research Use only

Handling

Concentration:	1 mg/mL
Buffer:	1 mg/mL in 1X PBS, BSA free, sodium azide free
Preservative:	Azide free
Storage:	4 °C,-20 °C
Storage Comment:	Store the recombinant CA19-9 antibody at 2-8°C (with azide) or aliquot and store at -20°C or colder (without azide).

Images



Immunohistochemistry

Image 1. IHC testing of FFPE human gastric carcinoma with recombinant CA19-9 antibody (CA19.9/1390R). HIER: steam sections in pH6 citrate buffer for 10-20 min.