



[Go to Product page](#)

Datasheet for ABIN4949249

## Recombinant anti-Keratin Basic antibody

### 2 Images

#### Overview

Quantity:	100 µg
Target:	Keratin Basic
Reactivity:	Human
Host:	Rabbit
Antibody Type:	Recombinant Antibody
Clonality:	Monoclonal
Conjugate:	Un-conjugated
Application:	Western Blotting (WB), Immunofluorescence (IF), Flow Cytometry (FACS), Immunohistochemistry (Paraffin-embedded Sections) (IHC (p))

#### Product Details

Immunogen:	Recombinant human KRT76 protein was used as the immunogen for the recombinant Basic Cytokeratin antibody.
Clone:	KRTH-1576R
Isotype:	IgG kappa
Purification:	Protein A affinity chromatography

#### Target Details

Target:	Keratin Basic
Alternative Name:	Basic Cytokeratin ( <a href="#">Keratin Basic Products</a> )

## Target Details

---

**Background:** This mAb recognizes basic (Type II or HMW) cytokeratins, which include 67 kDa (CK1), 64 kDa (CK3), 59 kDa (CK4), 58 kDa (CK5), 56 kDa (CK6), 52 kDa (CK8). Twenty human keratins are resolved with two-dimensional gel electrophoresis into acidic (pI 6.0) subfamilies. The acidic keratins have molecular weights (MW) of 56.5, 55, 51, 50, 50, 48, 46, 45, and 40 kDa. Many studies have shown the usefulness of keratins as markers in cancer research and tumor diagnosis.

## Application Details

---

**Application Notes:** Optimal dilution of the recombinant Basic Cytokeratin antibody should be determined by the researcher.

1. The prediluted format is supplied in a dropper bottle and is optimized for use in IHC. After epitope retrieval step (if required), drip mAb solution onto the tissue section and incubate at RT for 30 min. \. Flow Cytometry: 0.5-1 µg/million cells in 0.1ml, Immunofluorescence: 1-2 µg/mL, Western blot: 0.5-1 µg/mL, Immunohistochemistry (FFPE): 0.25-0.5 µg/mL for 30 min at RT, Prediluted IHC only format: incubate for 30 min at RT (1)

**Restrictions:** For Research Use only

## Handling

---

**Concentration:** 0.2 mg/mL

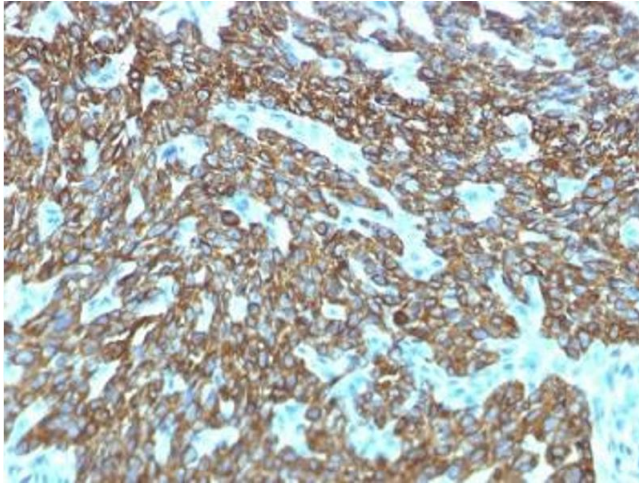
**Buffer:** 0.2 mg/mL in 1X PBS with 0.1 mg/mL BSA (US sourced) and 0.05 % sodium azide

**Preservative:** Sodium azide

**Precaution of Use:** This product contains Sodium azide: a POISONOUS AND HAZARDOUS SUBSTANCE which should be handled by trained staff only.

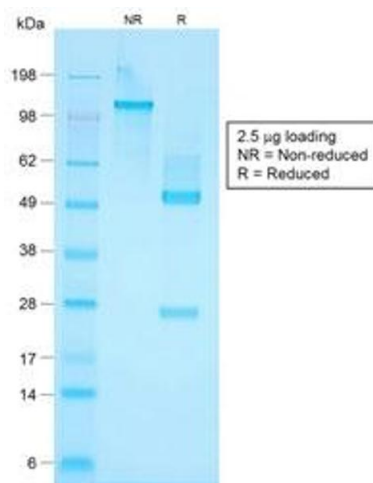
**Storage:** 4 °C, -20 °C

**Storage Comment:** Store the recombinant Basic Cytokeratin antibody at 2-8°C (with azide) or aliquot and store at -20°C or colder (without azide).



### Immunohistochemistry

**Image 1.** IHC testing of FFPE human skin with recombinant Basic Cytokeratin antibody (clone KRTH/1576R). Required HIER: boil tissue sections in 10mM citrate buffer, pH 6, for 10-20 min followed by cooling at RT for 20 min.



### SDS-PAGE

**Image 2.** SDS-PAGE analysis of purified, BSA-free recombinant Basic Cytokeratin antibody (clone KRTH/1576R) as confirmation of integrity and purity.