

Datasheet for ABIN4949449

**anti-ASRGL1 antibody**

3 Images

[Go to Product page](#)

## Overview

Quantity:	100 µg
Target:	ASRGL1
Reactivity:	Human
Host:	Mouse
Clonality:	Monoclonal
Conjugate:	This ASRGL1 antibody is un-conjugated
Application:	Western Blotting (WB), Immunofluorescence (IF), Flow Cytometry (FACS), Immunohistochemistry (Paraffin-embedded Sections) (IHC (p))

## Product Details

Immunogen:	A human partial recombinant protein was used as the immunogen for this ASRGL1 antibody.
Clone:	CRASH-1289
Isotype:	IgG1
Purification:	Protein G affinity chromatography

## Target Details

Target:	ASRGL1
Alternative Name:	ASRGL1 / ALP1 ( <a href="#">ASRGL1 Products</a> )
Background:	ASRGL1 (Asparaginase-like protein 1), also known as CRASH, belongs to the Ntn-hydrolase family. Asparaginases utilize asparagine as a substrate to produce aspartic acid and ammonia. ASRGL1 has been identified as a autoantigenic protein that is present in the mid-piece of sperm

## Target Details

after obstruction of the male reproductive tract. It is expressed highly in testis, but is also expressed in brain, kidney and gastrointestinal tissues. High levels of ASRGL1 have also been identified in ovarian, uterine and mammary tumors in comparison with normal tissues of the same origin.

Gene ID: 80150

## Application Details

**Application Notes:** The concentration stated for each application is a general starting point. Variations in protocols, secondaries and substrates may require the ASRGL1 antibody to be titrated up or down for optimal performance. Western blot: 0.5-1 µg/mL, FACS: 0.5-1 µg/10<sup>6</sup> cells in 0.1 mL, IF: 0.5-1 µg/mL, IHC (FFPE): 0.5-1 µg/mL

**Restrictions:** For Research Use only

## Handling

**Concentration:** 1 mg/mL

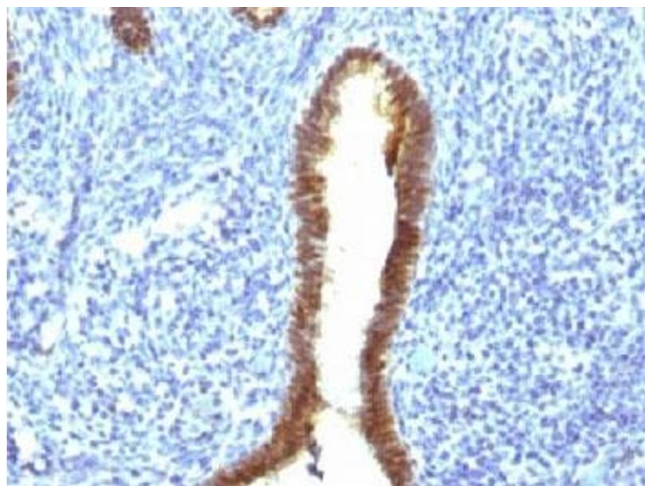
**Buffer:** 1 mg/mL in 1X PBS, BSA free, sodium azide free

**Preservative:** Azide free

**Storage:** 4 °C, -20 °C

**Storage Comment:** Store the ASRGL1 antibody at 2-8°C (with azide) or aliquot and store at -20°C or colder (without azide).

## Images



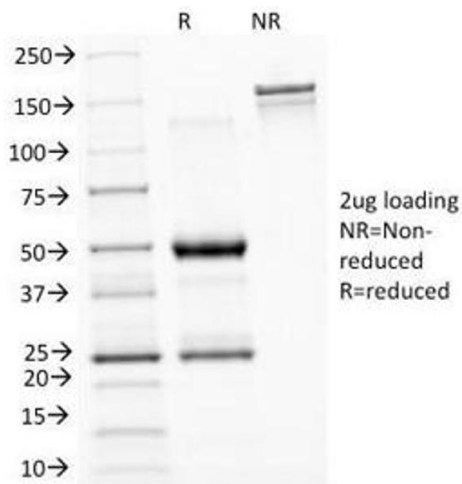
### Immunohistochemistry

**Image 1.** IHC testing of FFPE human uterus with ASRGL1 antibody (clone CRASH/1289). Required HIER: steam sections in 10mM Tris with 1mM EDTA, pH9, for 10-20 min.



### Immunohistochemistry

**Image 2.** IHC testing of FFPE human endometrium with ASRGL1 antibody (clone CRASH/1289). Required HIER: steam sections in 10mM Tris with 1mM EDTA, pH9, for 10-20 min.



### SDS-PAGE

**Image 3.** SDS-PAGE Analysis of Purified, BSA-Free ASRGL1 Antibody (clone CRASH/1289). Confirmation of Integrity and Purity of the Antibody.