

Datasheet for ABIN4949485

**anti-Calnexin antibody****5** Images[Go to Product page](#)

## Overview

Quantity:	100 µg
Target:	Calnexin (CANX)
Reactivity:	Human
Host:	Mouse
Clonality:	Monoclonal
Conjugate:	This Calnexin antibody is un-conjugated
Application:	Western Blotting (WB), ELISA, Immunohistochemistry (Paraffin-embedded Sections) (IHC (p)), Immunofluorescence (fixed cells) (IF/ICC)

## Product Details

Immunogen:	A partial human recombinant protein was used as the immunogen for the Calnexin antibody.
Clone:	CANX-1541
Isotype:	IgG2b kappa
No Cross-Reactivity:	Rat (Rattus)
Purification:	Protein G affinity chromatography

## Target Details

Target:	Calnexin (CANX)
Alternative Name:	Calnexin ( <a href="#">CANX Products</a> )
Background:	It recognizes a protein of 90 kDa, which is identified as Calnexin. Secretory and

## Target Details

---

transmembrane proteins are synthesized on polysomes and translocate into the endoplasmic reticulum (ER) where they are often modified by the formation of disulfide bonds, amino-linked glycosylation and folding. To help proteins fold properly, the ER contains a pool of molecular chaperones including calnexin. It is a calcium-binding, endoplasmic reticulum (ER)-associated protein that interacts transiently with newly synthesized N-linked glycoproteins, facilitating protein folding and assembly. It may also play a central role in the quality control of protein folding by retaining incorrectly folded protein subunits within the ER for degradation.

Pathways: [MAPK Signaling, Thyroid Hormone Synthesis](#)

## Application Details

---

Application Notes: Titration of the Calnexin antibody may be required for optimal performance. \. ELISA: 2-4 µg/mL (order BSA-free format for coating),WB: 1-2 µg/mL,IF/ICC: 1-2 µg/mL,IHC (FFPE): 1-2 µg/mL for 30 min at RT

Restrictions: For Research Use only

## Handling

---

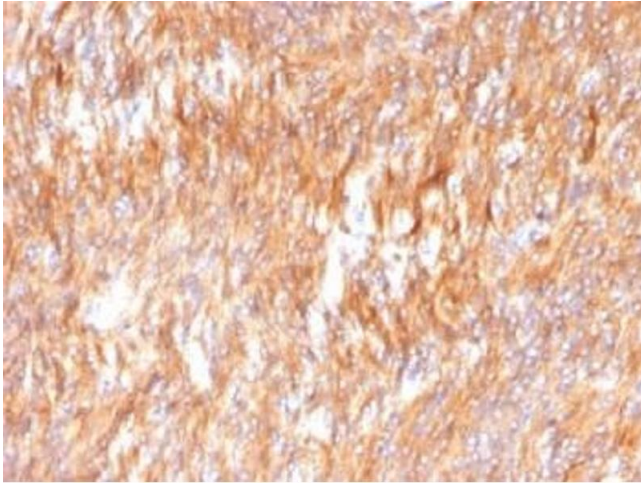
Concentration: 1 mg/mL

Buffer: 1 mg/mL in 1X PBS, BSA free, sodium azide free

Preservative: Azide free

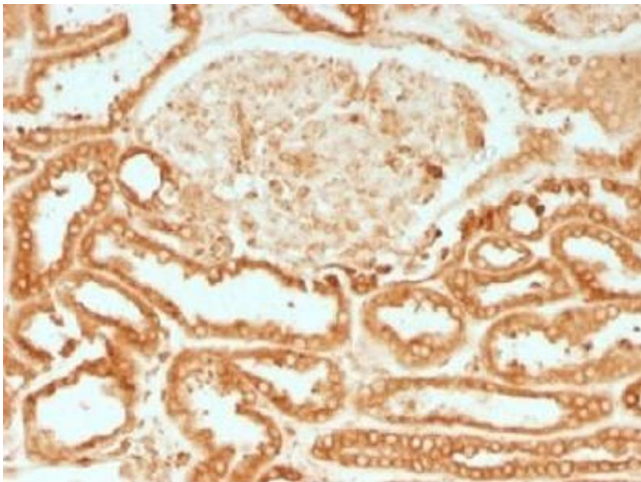
Storage: 4 °C,-20 °C

Storage Comment: Store the Calnexin antibody at 2-8°C (with azide) or aliquot and store at -20°C or colder (without azide).



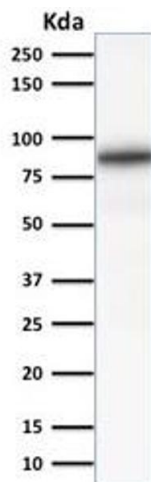
#### Immunohistochemistry

**Image 1.** IHC testing of FFPE human small intestine carcinoma with Calnexin antibody. HIER: boil tissue sections in 10mM Tris with 1mM EDTA, pH 9.0 for 10-20 min.



#### Immunohistochemistry

**Image 2.** IHC testing of FFPE human renal cell carcinoma with Calnexin antibody. HIER: boil tissue sections in 10mM Tris with 1mM EDTA, pH 9.0 for 10-20 min.



#### Western Blotting

**Image 3.** Western blot testing of human kidney lysate with Calnexin antibody (clone CANX/1541). Predicted molecular weight ~68 kDa but routinely observed at ~90 kDa.

Please check the [product details page](#) for more images. Overall 5 images are available for ABIN4949485.