

Datasheet for ABIN4949769

## anti-Interferon gamma antibody

### 3 Images



[Go to Product page](#)

### Overview

Quantity:	100 µg
Target:	Interferon gamma (IFNG)
Reactivity:	Human
Host:	Mouse
Clonality:	Monoclonal
Conjugate:	This Interferon gamma antibody is un-conjugated
Application:	Flow Cytometry (FACS), Immunofluorescence (IF), Immunohistochemistry (Paraffin-embedded Sections) (IHC (p))

### Product Details

Immunogen:	Human recombinant protein was used as the immunogen for the IFN gamma antibody.
Clone:	IFNG-466
Isotype:	IgG2b kappa
Purification:	Protein G affinity chromatography

### Target Details

Target:	Interferon gamma (IFNG)
Abstract:	<a href="#">IFNG Products</a>
Background:	Recognizes a protein of 20-25 kDa, identified as human interferon. This mAb is specific to human IFNg and recognizes both recombinant and native human IFNg. T lymphocytes and NK cells mainly produce IFNg. It is a pleiotropic cytokine involved in the regulation of nearly all

## Target Details

phases of immune and inflammatory responses, including the activation, growth and differentiation of T cell, B cells, macrophages, NK cells and other cell types such as endothelial cells and fibroblasts. It has weak anti-viral and anti-proliferative activity, and potentiates the antiviral and anti-tumor effects of IFNa/b (type I interferon).

Pathways: [Interferon-gamma Pathway](#), [Cellular Response to Molecule of Bacterial Origin](#), [Regulation of Leukocyte Mediated Immunity](#), [Positive Regulation of Immune Effector Process](#), [Production of Molecular Mediator of Immune Response](#), [ER-Nucleus Signaling](#), [Regulation of Carbohydrate Metabolic Process](#), [Protein targeting to Nucleus](#), [Autophagy](#)

## Application Details

Application Notes: Optimal dilution of the IFN gamma antibody should be determined by the researcher.\. Flow Cytometry: 0.5-1 µg/million cells in 0.1ml,Immunofluorescence: 1-2 µg/mL,IHC (FFPE): 0.5-1 µg/mL for 30 min at RT

Restrictions: For Research Use only

## Handling

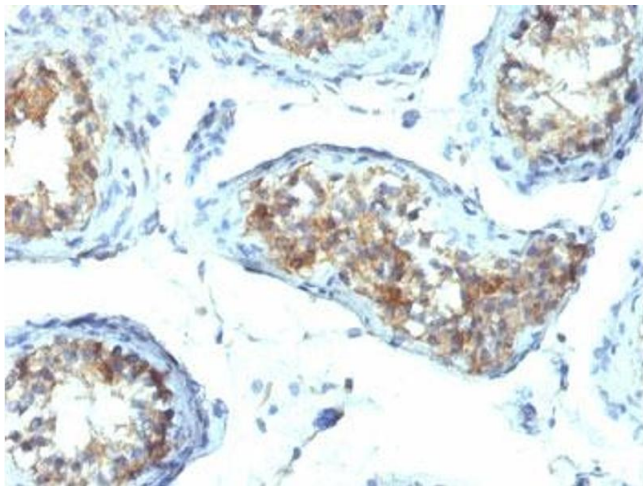
Concentration: 1 mg/mL

Buffer: 1 mg/mL in 1X PBS, BSA free, sodium azide free

Preservative: Azide free

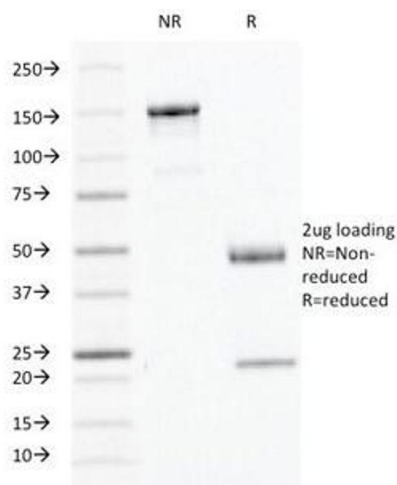
Storage: 4 °C,-20 °C

Storage Comment: Store the IFN gamma antibody at 2-8°C (with azide) or aliquot and store at -20°C or colder (without azide).



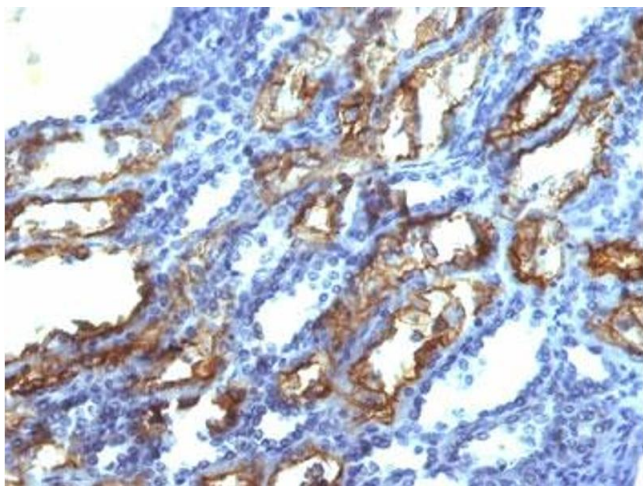
#### Immunohistochemistry

**Image 1.** IHC testing of FFPE human testis with IFN gamma antibody (clone IFNG/466). Required HIER: boil tissue sections in 10mM Tris with 1mM EDTA, pH 9.0, for 10-20 min.



#### SDS-PAGE

**Image 2.** SDS-PAGE Analysis of Purified, BSA-Free IFN gamma Antibody (clone IFNG/466). Confirmation of Integrity and Purity of the Antibody.



#### Immunohistochemistry

**Image 3.** IHC testing of FFPE human renal cell carcinoma with IFN gamma antibody (clone IFNG/466). Required HIER: boil tissue sections in 10mM Tris with 1mM EDTA, pH 9.0, for 10-20 min.