

Datasheet for ABIN4949890

anti-Spectrin, Beta, Non-erythrocytic 2 (SPTBN2) (AA 356-475) antibody[Go to Product page](#)**3** Images

Overview

| | |
|----------------------|---|
| Quantity: | 100 µg |
| Target: | Spectrin, Beta, Non-erythrocytic 2 (SPTBN2) |
| Binding Specificity: | AA 356-475 |
| Reactivity: | Human, Mouse, Rat |
| Host: | Mouse |
| Clonality: | Monoclonal |
| Conjugate: | Un-conjugated |
| Application: | Western Blotting (WB), Flow Cytometry (FACS), Immunofluorescence (IF), Immunohistochemistry (Paraffin-embedded Sections) (IHC (p)) |

Product Details

| | |
|---------------|---|
| Immunogen: | Human recombinant partial protein corresponding to amino acids 356-475 was used as the immunogen for this Spectrin beta III antibody. |
| Clone: | SPTBN2-1584 |
| Isotype: | IgG1 |
| Purification: | Protein G affinity chromatography |

Target Details

| | |
|-------------------|--|
| Target: | Spectrin, Beta, Non-erythrocytic 2 (SPTBN2) |
| Alternative Name: | SPTBN2 / Spectrin beta III (SPTBN2 Products) |

Target Details

Background: Spectrin is an actin binding protein that is a major component of the plasma membrane skeleton. Spectrins function as membrane organizers and stabilizers by forming dimers, tetramers and higher polymers. Spectrin alpha and spectrin beta are present in erythrocytes, whereas spectrin alphaII (fodrin alpha) and spectrin betaII (fodrin beta) are present in other somatic cells. SPTBN2/Spectrin betaIII is highly homologous to both spectrin betaII and spectrin betaIII. SPTBN2 is highly expressed in brain, kidney, pancreas and liver, and at lower levels in lung and placenta.

Gene ID: 6712

Pathways: [Regulation of Actin Filament Polymerization](#), [Synaptic Vesicle Exocytosis](#)

Application Details

Application Notes: The concentration stated for each application is a general starting point. Variations in protocols, secondaries and substrates may require the Spectrin beta III antibody to be titrated up or down for optimal performance. \. FACS: 0.5-1 µg/10⁶ cells in 0.1ml, IF: 0.5-1 µg/mL, IHC (FFPE): 0.5-1 µg/mL for 30 min at RT, WB: 0.5-1 µg/mL,

Restrictions: For Research Use only

Handling

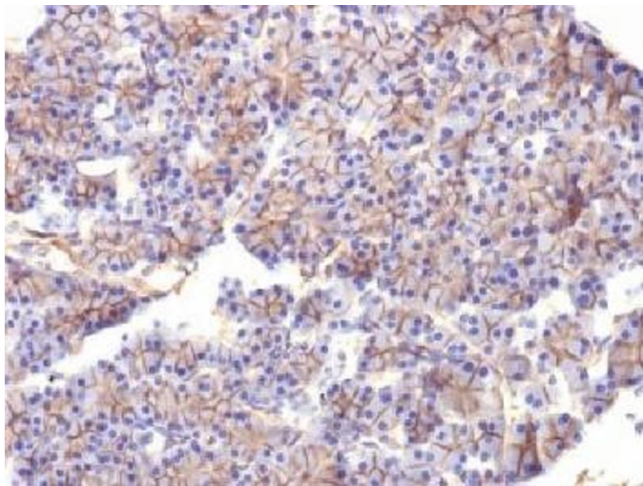
Concentration: 1 mg/mL

Buffer: 1 mg/mL in 1X PBS, BSA free, sodium azide free

Preservative: Azide free

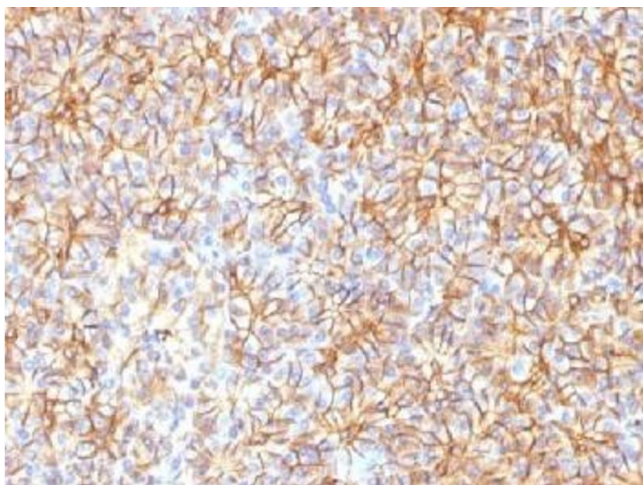
Storage: 4 °C, -20 °C

Storage Comment: Store the Spectrin beta III antibody at 2-8°C (with azide) or aliquot and store at -20°C or colder (without azide).



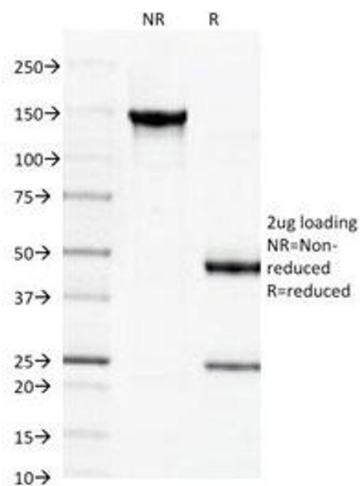
Immunohistochemistry

Image 1. IHC testing of FFPE rat pancreas with Spectrin beta III antibody (clone SPTBN2/1584). Required HIER: boil tissue sections in 10mM citrate buffer, pH 6, for 10-20 min followed by cooling at RT for 20 min.



Immunohistochemistry

Image 2. IHC testing of FFPE human pancreas with Spectrin beta III antibody (clone SPTBN2/1584). Required HIER: boil tissue sections in 10mM citrate buffer, pH 6, for 10-20 min followed by cooling at RT for 20 min.



SDS-PAGE

Image 3. SDS-PAGE Analysis of Purified, BSA-Free Spectrin beta III Antibody (clone SPTBN2/1584). Confirmation of Integrity and Purity of the Antibody.