

Datasheet for ABIN4949910  
**anti-TSHR, A Chain antibody**[Go to Product page](#)

## 1 Image

## Overview

Quantity:	100 µg
Target:	TSHR, A Chain
Reactivity:	Human
Host:	Mouse
Clonality:	Monoclonal
Conjugate:	This TSHR, A Chain antibody is un-conjugated
Application:	Flow Cytometry (FACS), Immunofluorescence (IF), Immunohistochemistry (Paraffin-embedded Sections) (IHC (p))

## Product Details

Immunogen:	Recombinant human TSH Receptor alpha chain protein was used as the immunogen for this TSHR antibody.
Clone:	SPM223
Isotype:	IgG1
Purification:	Protein G affinity chromatography

## Target Details

Target:	TSHR, A Chain
Alternative Name:	Thyroid Stimulating Hormone Receptor / TSHR (alpha chain) ( <a href="#">TSHR, A Chain Products</a> )
Background:	Thyroid-stimulating hormone (TSH, also known as thyrotropin) is a glycoprotein involved in the control of thyroid structure and metabolism, which stimulates the release of the thyroid

## Target Details

hormones. TSH is regulated by thyroid hormone (T3) and various retinoid compounds. TSH binds to the thyroid-stimulating hormone receptor (TSHR), which is cleaved into two subunits, A and B, and plays a major role in regulating thyroid function. The third cytoplasmic loop of TSHR has been identified as critical for its role in regulating inositol phosphate and cAMP formation. In Graves disease, an autoimmune disorder, TSHR is activated by autoantibodies, which may be stimulated by the cleavage of the A and B subunits.

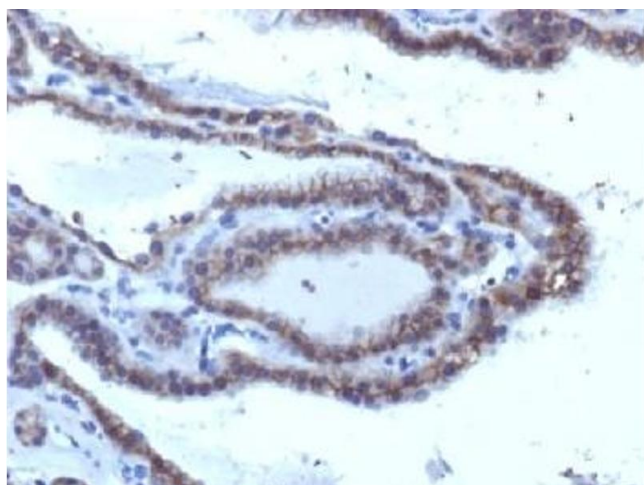
## Application Details

Application Notes:	The concentration stated for each application is a general starting point. Variations in protocols, secondaries and substrates may require the TSHR antibody to be titrated up or down for optimal performance.\. FACS: 0.5-1 µg/10 <sup>6</sup> cells in 0.1ml,IF: 1-2 µg/mL,IHC (FFPE): 1-2 µg/mL
Restrictions:	For Research Use only

## Handling

Concentration:	1 mg/mL
Buffer:	1 mg/mL in 1X PBS, BSA free, sodium azide free
Preservative:	Azide free
Storage:	4 °C,-20 °C
Storage Comment:	Store the TSHR antibody at 2-8°C (with azide) or aliquot and store at -20°C or colder (without azide).

## Images



### Immunohistochemistry

**Image 1.** IHC testing of FFPE human thyroid carcinoma with TSHR antibody (clone SPM223). Required HIER: boil tissue sections in 10mM Tris with 1mM EDTA, pH 9, or 10mM citrate buffer, pH 6, for 10-20 min followed by cooling at RT for 20 min.