

Datasheet for ABIN4949911
anti-TSHR, B Chain antibody[Go to Product page](#)

1 Image

Overview

Quantity:	100 µg
Target:	TSHR, B Chain
Reactivity:	Human
Host:	Mouse
Clonality:	Monoclonal
Conjugate:	This TSHR, B Chain antibody is un-conjugated
Application:	Flow Cytometry (FACS), Immunofluorescence (IF), Immunohistochemistry (Paraffin-embedded Sections) (IHC (p))

Product Details

Immunogen:	Recombinant human TSHR beta chain protein was used as the immunogen for this TSH Receptor antibody.
Clone:	SPM222
Isotype:	IgG2a
Purification:	Protein G affinity chromatography

Target Details

Target:	TSHR, B Chain
Alternative Name:	Thyroid Stimulating Hormone Receptor / TSHR (beta chain) (TSHR, B Chain Products)
Background:	Thyroid-stimulating hormone (TSH, also known as thyrotropin) is a glycoprotein involved in the control of thyroid structure and metabolism, which stimulates the release of the thyroid

Target Details

hormones. TSH is regulated by thyroid hormone (T3) and various retinoid compounds. TSH binds to the thyroid-stimulating hormone receptor (TSHR), which is cleaved into two subunits, A and B, and plays a major role in regulating thyroid function. The third cytoplasmic loop of TSHR has been identified as critical for its role in regulating inositol phosphate and cAMP formation. In Graves disease, an autoimmune disorder, TSHR is activated by autoantibodies, which may be stimulated by the cleavage of the A and B subunits.

Application Details

Application Notes:	The concentration stated for each application is a general starting point. Variations in protocols, secondaries and substrates may require the TSH Receptor antibody to be titrated up or down for optimal performance.\. FACS: 0.5-1 µg/10 ⁶ cells in 0.1ml,IF: 1-2 µg/mL,IHC (FFPE): 1-2 µg/mL for 30 min at RT
--------------------	--

Restrictions:	For Research Use only
---------------	-----------------------

Handling

Concentration:	0.2 mg/mL
----------------	-----------

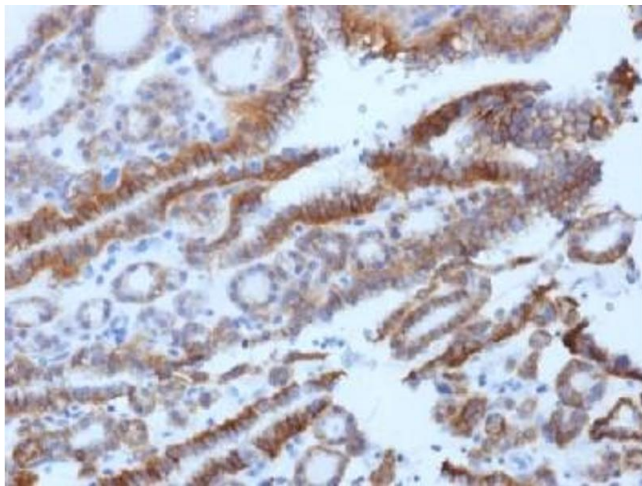
Buffer:	0.2 mg/mL in 1X PBS with 0.1 mg/mL BSA (US sourced) and 0.05 % sodium azide
---------	---

Preservative:	Sodium azide
---------------	--------------

Precaution of Use:	This product contains Sodium azide: a POISONOUS AND HAZARDOUS SUBSTANCE which should be handled by trained staff only.
--------------------	--

Storage:	4 °C,-20 °C
----------	-------------

Storage Comment:	Store the TSH Receptor antibody at 2-8°C (with azide) or aliquot and store at -20°C or colder (without azide).
------------------	--



Immunohistochemistry

Image 1. IHC testing of FFPE human thyroid carcinoma with TSH Receptor antibody (clone SPM222). Required HIER: boil tissue sections in 10mM Tris buffer with 1mM EDTA, pH 8, for 10-20 min followed by cooling at RT for 20 min.