

Datasheet for ABIN4949968

anti-ABCB11 antibody[Go to Product page](#)

4 Images

Overview

Quantity:	100 µg
Target:	ABCB11
Reactivity:	Human, Mouse, Rat
Host:	Rabbit
Clonality:	Polyclonal
Conjugate:	This ABCB11 antibody is un-conjugated
Application:	Western Blotting (WB), Immunohistochemistry (Paraffin-embedded Sections) (IHC (p)), Flow Cytometry (FACS)

Product Details

Immunogen:	Amino acids KYGDNTKEIPMERVIAAAKQAQLHD of human ABCB11 were used as the immunogen for the ABCB11 antibody.
Isotype:	IgG
Purification:	Antigen affinity

Target Details

Target:	ABCB11
Alternative Name:	ABCB11 (ABCB11 Products)
Background:	Bile Salt Export Pump (BSEP) is a protein which in humans is encoded by the ABCB 11 gene. It is a member of the superfamily of ATP-binding cassette (ABC) transporters, also known as ABCB11. It is mapped to chromosome 2q24. The BSEP protein is mainly expressed in the liver.

Target Details

ABCB11 is a gene associated with progressive familial intrahepatic cholestasis type 2 (PFIC2) which caused by mutations in the ABCB11 gene will increases the risk of hepatocellular carcinoma in early life.

UniProt: [O95342](#)

Application Details

Application Notes: Optimal dilution of the ABCB11 antibody should be determined by the researcher.\. Western blot: 0.1-0.5 µg/mL,IHC (Paraffin): 0.5-1 µg/mL,FACS: 1-3 µg/10⁶ cells

Restrictions: For Research Use only

Handling

Buffer: 0.5 mg/mL if reconstituted with 0.2 mL sterile DI water

Storage: -20 °C

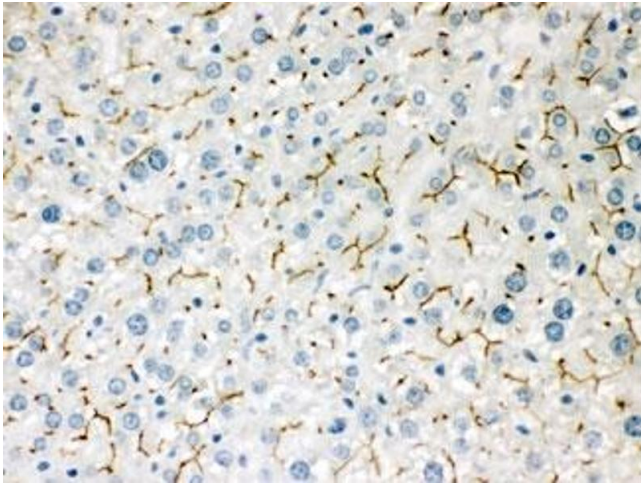
Storage Comment: After reconstitution, the ABCB11 antibody can be stored for up to one month at 4°C. For long-term, aliquot and store at -20°C. Avoid repeated freezing and thawing.

Images



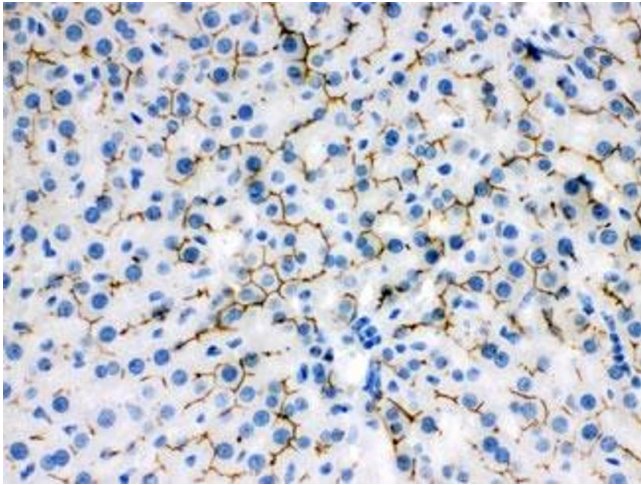
Western Blotting

Image 1. Western blot testing of 1) rat liver, 2) mouse liver and 3) human SMMC lysate with ABCB11 antibody. Expected/observed molecular weight ~146 kDa.



Immunohistochemistry

Image 2. IHC testing of FFPE mouse liver with ABCB11 antibody. HIER: Boil the paraffin sections in pH 6, 10mM citrate buffer for 20 minutes and allow to cool prior to staining.



Immunohistochemistry

Image 3. IHC testing of FFPE rat liver with ABCB11 antibody. HIER: Boil the paraffin sections in pH 6, 10mM citrate buffer for 20 minutes and allow to cool prior to staining.

Please check the [product details page](#) for more images. Overall 4 images are available for ABIN4949968.