

Datasheet for ABIN4950226
anti-Arylsulfatase A antibody[Go to Product page](#)

3 Images

Overview

Quantity:	100 µg
Target:	Arylsulfatase A (ARSA)
Reactivity:	Human, Mouse, Rat
Host:	Rabbit
Clonality:	Polyclonal
Conjugate:	This Arylsulfatase A antibody is un-conjugated
Application:	Western Blotting (WB), Immunohistochemistry (Paraffin-embedded Sections) (IHC (p)), Flow Cytometry (FACS)

Product Details

Immunogen:	Amino acids QALKQLQLLKAQLDAAVTFGPSQVARGED of human ARSA were used as the immunogen for the ARSA antibody.
Isotype:	IgG
Purification:	Antigen affinity

Target Details

Target:	Arylsulfatase A (ARSA)
Alternative Name:	ARSA (ARSA Products)
Background:	Arylsulfatase A (ARSA) is an enzyme that breaks down sulfatides, namely cerebroside 3-sulfate into cerebroside and sulfate. In humans, arylsulfatase A is encoded by the ARSA gene. ARSA is mapped to 22q13.33. The protein encoded by this gene hydrolyzes cerebroside sulfate to

Target Details

cerebroside and sulfate. Defects in this gene lead to metachromatic leucodystrophy (MLD), a progressive demyelination disease which results in a variety of neurological symptoms and ultimately death. Alternatively spliced transcript variants have been described for this gene.

UniProt: [P15289](#)

Application Details

Application Notes: Optimal dilution of the ARSA antibody should be determined by the researcher.\. Western blot: 0.1-0.5 µg/mL,IHC (Paraffin): 0.5-1 µg/mL,FACS: 1-3 µg/10⁶ cells

Restrictions: For Research Use only

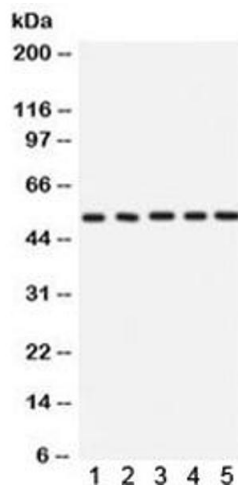
Handling

Buffer: 0.5 mg/mL if reconstituted with 0.2 mL sterile DI water

Storage: -20 °C

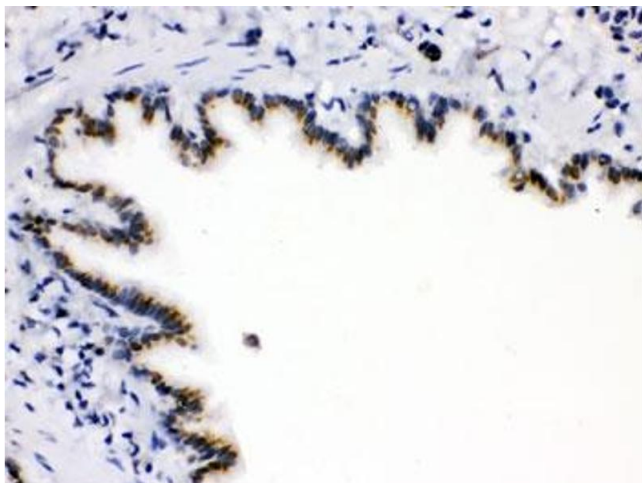
Storage Comment: After reconstitution, the ARSA antibody can be stored for up to one month at 4°C. For long-term, aliquot and store at -20°C. Avoid repeated freezing and thawing.

Images



Western Blotting

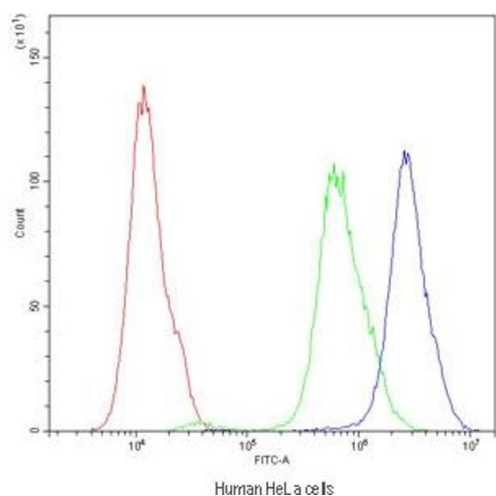
Image 1. Western blot testing of 1) rat testis, 2) rat pancreas, 3) rat skeletal muscle, 4) mouse kidney and 5) human MCF7 lysate with ARSA antibody. Expected/observed molecular weight ~54 kDa.



Immunohistochemistry

Image 2. IHC testing of FFPE rat lung with ARSA antibody.

HIER: Boil the paraffin sections in pH 6, 10mM citrate buffer for 20 minutes and allow to cool prior to staining.



Flow Cytometry

Image 3. Flow cytometry testing of human HeLa cells with

ARSA antibody at 1ug/10⁶ cells (blocked with goat sera)