

Datasheet for ABIN4950253

anti-ATG14 antibody

5 Images

[Go to Product page](#)

Overview

Quantity:	100 µg
Target:	ATG14
Reactivity:	Human, Rat
Host:	Rabbit
Clonality:	Polyclonal
Conjugate:	This ATG14 antibody is un-conjugated
Application:	Western Blotting (WB), Flow Cytometry (FACS), Immunohistochemistry (Paraffin-embedded Sections) (IHC (p))

Product Details

Immunogen:	Amino acids RDRERFIDKKERLSRLKSKQEEFQKEVLKAME of human ATG14L were used as the immunogen for the ATG14L antibody.
Isotype:	IgG
Purification:	Antigen affinity

Target Details

Target:	ATG14
Alternative Name:	ATG14L (ATG14 Products)
Background:	ATG14 (also known as beclin-1-associated autophagy-related key regulator (Barkor) or ATG14L), an essential autophagy-specific regulator of the class III phosphatidylinositol 3-kinase complex, promotes membrane tethering of protein-free liposomes, and enhances hemifusion

Target Details

and full fusion of proteoliposomes reconstituted with the target (t)-SNAREs (soluble N-ethylmaleimide-sensitive factor attachment protein receptors) syntaxin 17 (STX17) and SNAP29, and the vesicle (v)-SNARE VAMP8 (vesicle-associated membrane protein 8). ATG14 binds to the SNARE core domain of STX17 through its coiled-coil domain, and stabilizes the STX17-SNAP29 binary t-SNARE complex on autophagosomes.

UniProt: [Q6ZNE5](#)

Pathways: [Autophagy](#)

Application Details

Application Notes: Optimal dilution of the ATG14L antibody should be determined by the researcher.\. Western blot: 0.1-0.5 µg/mL,IHC (Paraffin): 0.5-1 µg/mL,FACS: 1-3 µg/10⁶ cells

Restrictions: For Research Use only

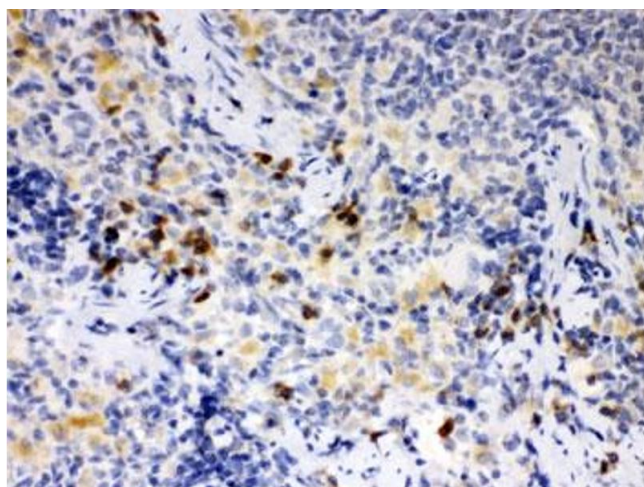
Handling

Buffer: 0.5 mg/mL if reconstituted with 0.2 mL sterile DI water

Storage: -20 °C

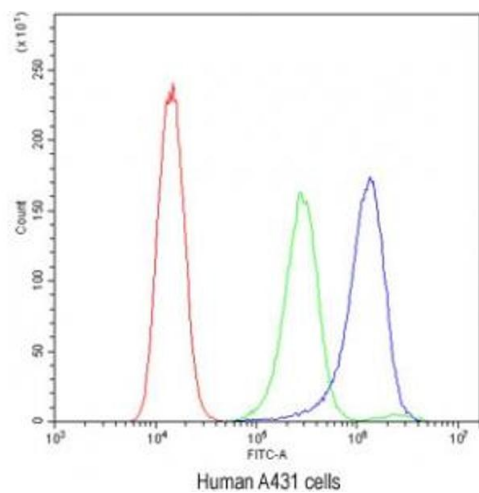
Storage Comment: After reconstitution, the ATG14L antibody can be stored for up to one month at 4°C. For long-term, aliquot and store at -20°C. Avoid repeated freezing and thawing.

Images



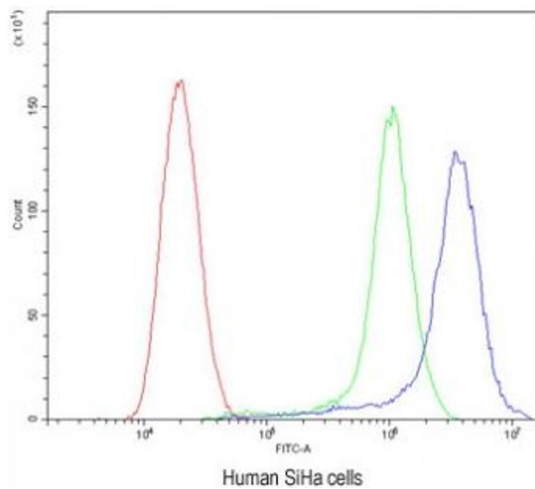
Immunohistochemistry

Image 1. IHC testing of FFPE rat spleen with ATG14L antibody. HIER: Boil the paraffin sections in pH 6, 10mM citrate buffer for 20 minutes and allow to cool prior to staining.



Flow Cytometry

Image 2. Flow cytometry testing of human A431 cells with ATG14L antibody at 1ug/10⁶ cells (blocked with goat sera)



Flow Cytometry

Image 3. Flow cytometry testing of human SiHa cells with ATG14L antibody at 1ug/10⁶ cells (blocked with goat sera)

Please check the [product details page](#) for more images. Overall 5 images are available for ABIN4950253.