



[Go to Product page](#)

Datasheet for ABIN4950900
anti-EIF6 antibody (AA 66-210)

5 Images

Overview

Quantity:	100 µg
Target:	EIF6
Binding Specificity:	AA 66-210
Reactivity:	Human, Mouse, Rat
Host:	Rabbit
Clonality:	Polyclonal
Conjugate:	This EIF6 antibody is un-conjugated
Application:	Western Blotting (WB), Immunohistochemistry (Paraffin-embedded Sections) (IHC (p)), Immunocytochemistry (ICC)

Product Details

Immunogen:	Amino acids 66-210 of human EIF6/EIF3A were used as the immunogen for the EIF3A antibody.
Isotype:	IgG
Purification:	Antigen affinity

Target Details

Target:	EIF6
Alternative Name:	EIF6 / EIF3A (EIF6 Products)
Background:	EIF6 (Eukaryotic Translation Initiation Factor 6), also called EIF3A or ITGB4BP, is a human gene. By fluorescence in situ hybridization, Sanvito et al. (1998) mapped the ITGB4BP gene to

Target Details

20q11.2. Ceci et al. (2003) demonstrated that the ribosomal 60S subunit is activated by release of EIF6. In the cytoplasm, EIF6 is bound to free 60S but not to 80S subunits. Furthermore, EIF6 interacts in the cytoplasm with RACK1, a receptor for activated protein kinase C. Gandin et al. (2008) demonstrated that mammalian eIF6 is required for efficient initiation of translation in vivo. Eif6-null mouse embryos were lethal at preimplantation. Heterozygous mice had 50 % reduction of eIF6 levels in all tissues, and showed reduced mass of hepatic and adipose tissues due to a lower number of cells and to impaired G1/S cell cycle progression.

UniProt: [P56537](#)

Pathways: [Ribonucleoprotein Complex Subunit Organization](#), [Ribosome Assembly](#)

Application Details

Application Notes: Optimal dilution of the EIF3A antibody should be determined by the researcher. Western blot: 0.1-0.5 µg/mL, IHC (Paraffin): 0.5-1 µg/mL, ICC (Paraffin): 0.5-1 µg/mL

Restrictions: For Research Use only

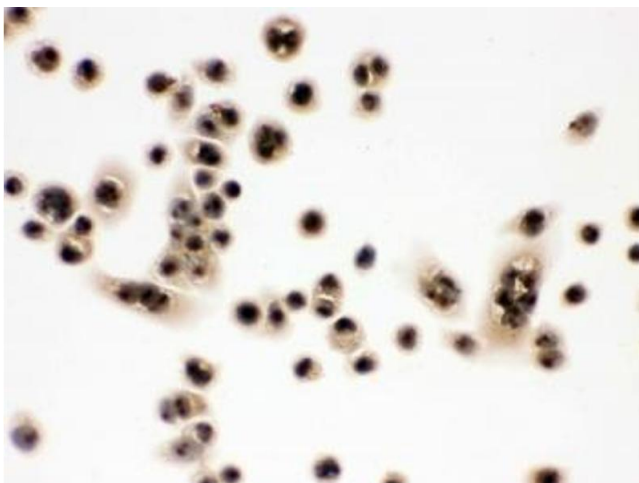
Handling

Buffer: 0.5 mg/mL if reconstituted with 0.2 mL sterile DI water

Storage: -20 °C

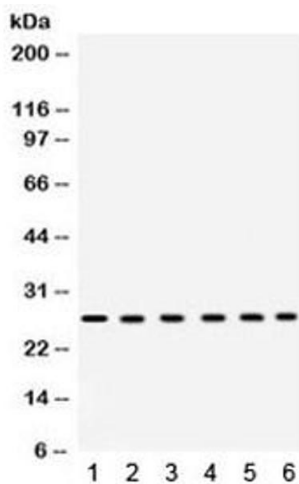
Storage Comment: After reconstitution, the EIF3A antibody can be stored for up to one month at 4°C. For long-term, aliquot and store at -20°C. Avoid repeated freezing and thawing.

Images



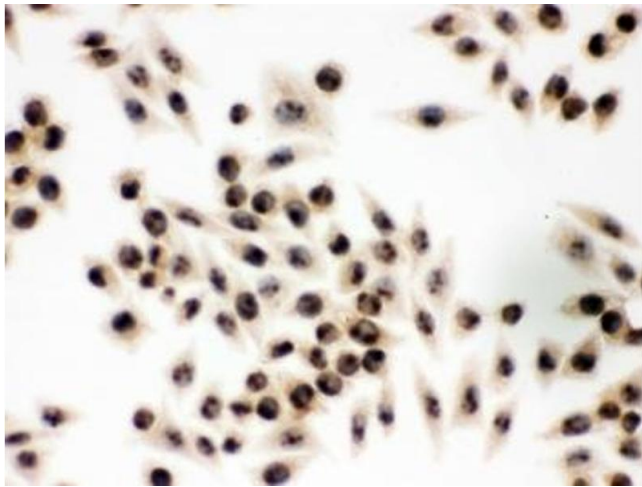
Immunohistochemistry

Image 1. IHC testing of FFPE human SW480 cells with EIF3A antibody. HIER: Boil the paraffin sections in pH 6, 10mM citrate buffer for 20 minutes and allow to cool prior to staining.



Western Blotting

Image 2. Western blot testing of 1) rat heart, 2) rat liver, 3) mouse liver, 4) human placenta, 5) COLO320 and 6) HeLa lysate with EIF3A antibody. Expected/observed molecular weight ~27 kDa.



Immunohistochemistry

Image 3. IHC testing of FFPE human SMMC-7221 cells with EIF3A antibody. HIER: Boil the paraffin sections in pH 6, 10mM citrate buffer for 20 minutes and allow to cool prior to staining.

Please check the [product details page](#) for more images. Overall 5 images are available for ABIN4950900.