

Datasheet for ABIN4951627

anti-Lamin B1 antibody (AA 266-583)

8 Images

[Go to Product page](#)

Overview

Quantity:	100 µg
Target:	Lamin B1 (LMNB1)
Binding Specificity:	AA 266-583
Reactivity:	Human, Mouse, Rat
Host:	Rabbit
Clonality:	Polyclonal
Conjugate:	This Lamin B1 antibody is un-conjugated
Application:	Western Blotting (WB), Immunohistochemistry (Paraffin-embedded Sections) (IHC (p)), Immunocytochemistry (ICC), Immunohistochemistry (Frozen Sections) (IHC (fro))

Product Details

Immunogen:	Amino acids 266-583 of human Lamin B1 were used as the immunogen for the LMNB1 antibody.
Isotype:	IgG
Purification:	Antigen affinity

Target Details

Target:	Lamin B1 (LMNB1)
Alternative Name:	Lamin B1 (LMNB1 Products)
Background:	Lamin B1 is a protein that in humans is encoded by the LMNB1 gene. The nuclear lamina consists of a two-dimensional matrix of proteins located next to the inner nuclear membrane.

Target Details

The lamin family of proteins make up the matrix and are highly conserved in evolution. During mitosis, the lamina matrix is reversibly disassembled as the lamin proteins are phosphorylated. Lamin proteins are thought to be involved in nuclear stability, chromatin structure and gene expression. Vertebrate lamins consist of two types, A and B. This gene encodes one of the two B type proteins, B1.

UniProt: [P20700](#)

Pathways: [Apoptosis](#), [Caspase Cascade in Apoptosis](#)

Application Details

Application Notes: Optimal dilution of the LMNB1 antibody should be determined by the researcher.\. Western blot: 0.1-0.5 µg/mL,IHC (Paraffin): 0.5-1 µg/mL,IHC (Frozen): 0.5-1 µg/mL,ICC (Paraffin): 0.5-1 µg/mL

Restrictions: For Research Use only

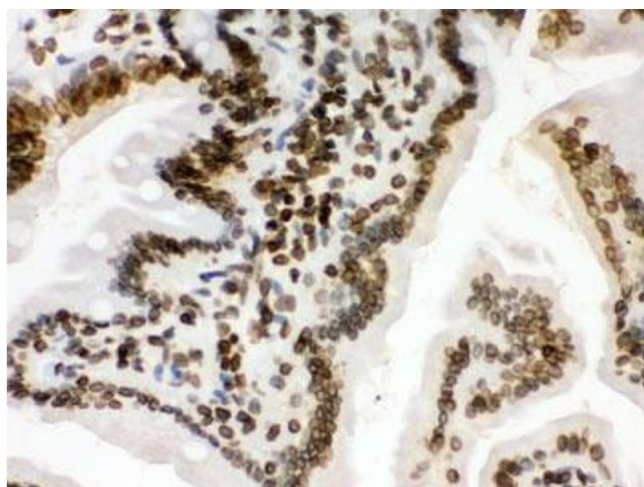
Handling

Buffer: 0.5 mg/mL if reconstituted with 0.2 mL sterile DI water

Storage: -20 °C

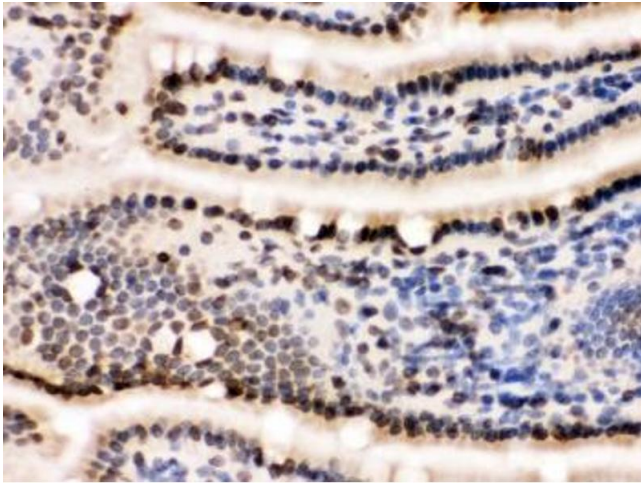
Storage Comment: After reconstitution, the LMNB1 antibody can be stored for up to one month at 4°C. For long-term, aliquot and store at -20°C. Avoid repeated freezing and thawing.

Images



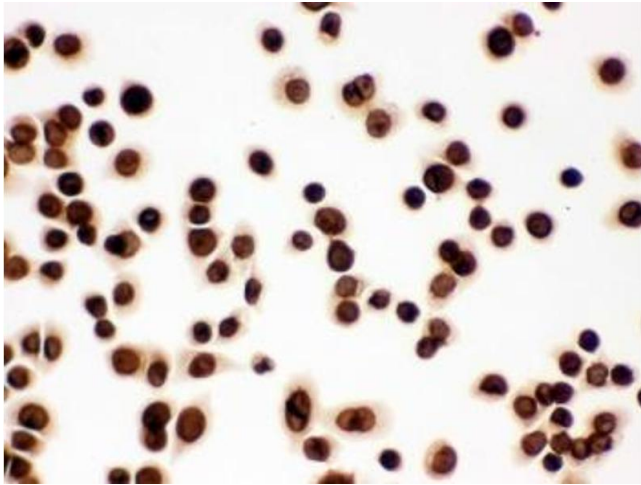
Immunohistochemistry

Image 1. IHC testing of FFPE mouse intestine with LMNB1 antibody. HIER: Boil the paraffin sections in pH 6, 10mM citrate buffer for 20 minutes and allow to cool prior to staining.



Immunohistochemistry

Image 2. IHC testing of frozen mouse small intestine tissue with LMNB1 antibody.



Immunocytochemistry

Image 3. ICC testing of FFPE human SW480 cells with LMNB1 antibody. HIER: Boil the paraffin sections in pH 6, 10mM citrate buffer for 20 minutes and allow to cool prior to staining.

Please check the [product details page](#) for more images. Overall 8 images are available for ABIN4951627.