

[Go to Product page](#)

Datasheet for ABIN4952244

**anti-PPT1 antibody****3** Images

## Overview

Quantity:	100 µg
Target:	PPT1
Reactivity:	Human, Rat
Host:	Rabbit
Clonality:	Polyclonal
Conjugate:	This PPT1 antibody is un-conjugated
Application:	Western Blotting (WB), Immunohistochemistry (Paraffin-embedded Sections) (IHC (p)), Flow Cytometry (FACS)

## Product Details

Immunogen:	Amino acids KEDVYRNHSIFLADINQERGINESYKKNLMALKK of human PPT1 were used as the immunogen for the PPT1 antibody.
Isotype:	IgG
Purification:	Antigen affinity

## Target Details

Target:	PPT1
Alternative Name:	PPT1 ( <a href="#">PPT1 Products</a> )
Background:	Palmitoyl-protein thioesterase 1 (PPT-1), also known as palmitoyl-protein hydrolase 1, is an enzyme that in humans is encoded by the PPT1 gene. PPT-1 is a member of the palmitoyl protein thioesterase family. The protein encoded by this gene is a small glycoprotein involved in

## Target Details

the catabolism of lipid-modified proteins during lysosomal degradation. The encoded enzyme removes thioester-linked fatty acyl groups such as palmitate from cysteine residues. Defects in this gene are a cause of infantile neuronal ceroid lipofuscinosis 1 (CLN1, or INCL) and neuronal ceroid lipofuscinosis 4 (CLN4). Two transcript variants encoding different isoforms have been found for this gene.

UniProt: [P50897](#)

Pathways: [SARS-CoV-2 Protein Interactome](#)

## Application Details

Application Notes: Optimal dilution of the PPT1 antibody should be determined by the researcher. Western blot: 0.1-0.5 µg/mL, IHC (Paraffin): 0.5-1 µg/mL, FACS: 1-3 µg/10<sup>6</sup> cells

Restrictions: For Research Use only

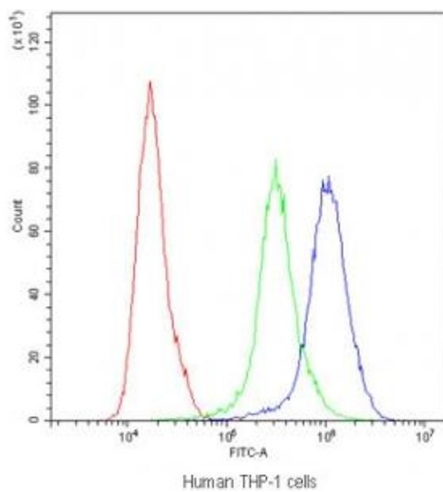
## Handling

Buffer: 0.5 mg/mL if reconstituted with 0.2 mL sterile DI water

Storage: -20 °C

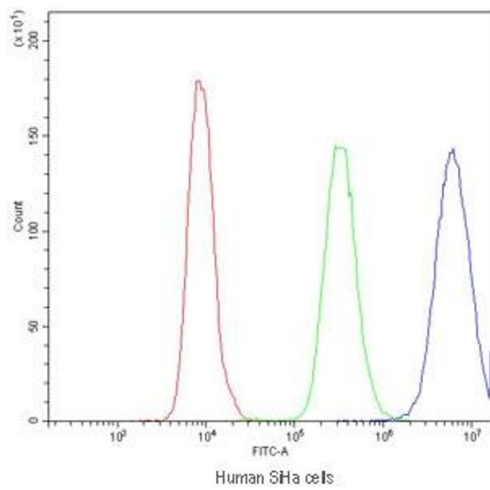
Storage Comment: After reconstitution, the PPT1 antibody can be stored for up to one month at 4°C. For long-term, aliquot and store at -20°C. Avoid repeated freezing and thawing.

## Images



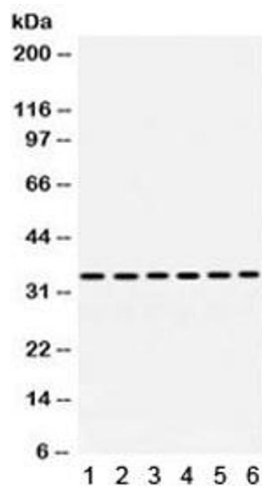
### Flow Cytometry

**Image 1.** Flow cytometry testing of human THP-1 cells with PPT1 antibody at 1µg/10<sup>6</sup> cells (blocked with goat sera)



### Flow Cytometry

**Image 2.** Flow cytometry testing of human SiHa cells with PPT1 antibody at 1ug/10<sup>6</sup> cells (blocked with goat sera)



### Western Blotting

**Image 3.** Western blot testing of 1) rat brain, 2) rat liver, and human 3) 22RV1, 4) HeLa, 5) A431 and 6) SMMC lysate with PPT1 antibody. Expected/observed molecular weight ~34 kDa.