

Datasheet for ABIN4952702

anti-ABI1 antibody

4 Images

[Go to Product page](#)

Overview

Quantity:	100 µg
Target:	ABI1
Reactivity:	Human, Rat, Mouse
Host:	Rabbit
Clonality:	Polyclonal
Conjugate:	This ABI1 antibody is un-conjugated
Application:	Western Blotting (WB), Immunohistochemistry (Paraffin-embedded Sections) (IHC (p)), Flow Cytometry (FACS)

Product Details

Immunogen:	Amino acids HGVKWLKAKHGNNQPARTGTLRSTN of human SSH3BP1 were used as the immunogen for the SSH3BP1 antibody.
Isotype:	IgG
Purification:	Antigen affinity

Target Details

Target:	ABI1
Alternative Name:	SSH3BP1 (ABI1 Products)
Background:	SSH3BP1 is also known as ABI1. ABI1 is a human homolog of mouse Abl-interactor-1 (Abi1), mapped on 10p11.2. ABI1 participates in the transduction of signals from Ras to Rac by regulating Rac-specific guanine nucleotide exchange factor (GEF) activities. It dramatically

Target Details

promoted ABL1-mediated tyrosine phosphorylation of MENA, but not of other substrates. Abi-1 regulates c-Abl-mediated phosphorylation of Mena by interacting with both proteins. ABI1 plays a role in the leukemogenesis by translocating to MLL.

UniProt: [Q8IZP0](#)

Pathways: [RTK Signaling](#), [Response to Water Deprivation](#), [ER-Nucleus Signaling](#)

Application Details

Application Notes: Optimal dilution of the SSH3BP1 antibody should be determined by the researcher.\. Western blot: 0.1-0.5 µg/mL,IHC (Paraffin): 0.5-1 µg/mL,FACS: 1-3 µg/10⁶ cells

Restrictions: For Research Use only

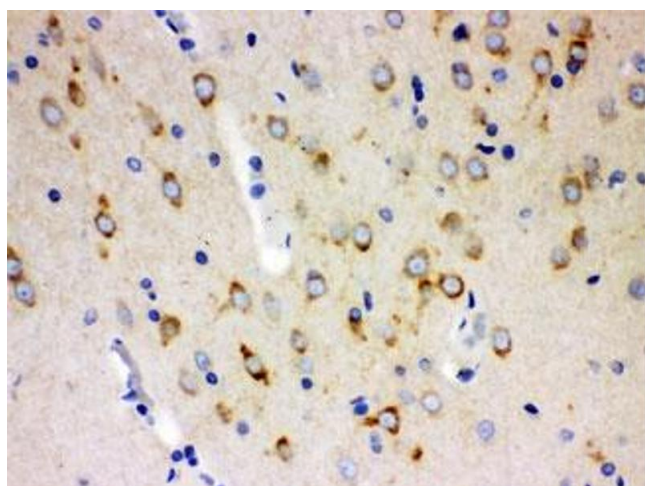
Handling

Buffer: 0.5 mg/mL if reconstituted with 0.2 mL sterile DI water

Storage: -20 °C

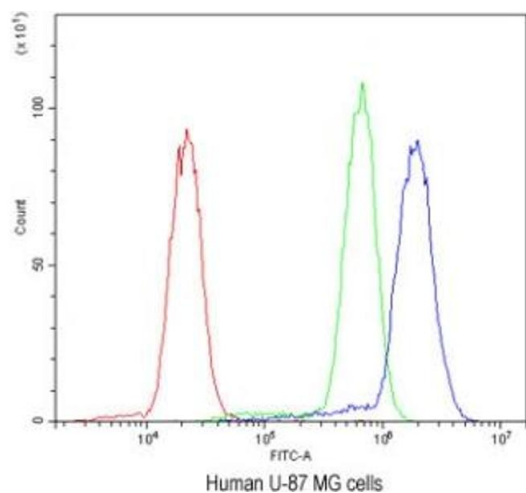
Storage Comment: After reconstitution, the SSH3BP1 antibody can be stored for up to one month at 4°C. For long-term, aliquot and store at -20°C. Avoid repeated freezing and thawing.

Images



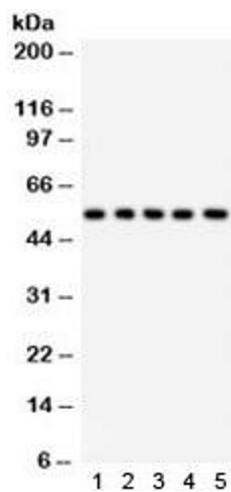
Immunohistochemistry

Image 1. IHC testing of FFPE rat brain with SSH3BP1 antibody. HIER: Boil the paraffin sections in pH 6, 10mM citrate buffer for 20 minutes and allow to cool prior to staining.



Flow Cytometry

Image 2. Flow cytometry testing of human U-87 MG cells with SSH3BP1 antibody at $1\mu\text{g}/10^6$ cells (blocked with goat sera)



Western Blotting

Image 3. Western blot testing of 1) rat liver, 2) rat testis, 3) human HeLa, 4) RH35, and 5) HEPA lysate with SSH3BP1 antibody. Expected/observed molecular weight ~ 55 kDa.

Please check the [product details page](#) for more images. Overall 4 images are available for ABIN4952702.