

Datasheet for ABIN4952801

anti-CCT4 antibody

9 Images

[Go to Product page](#)

Overview

Quantity:	100 µg
Target:	CCT4
Reactivity:	Human, Mouse, Rat
Host:	Rabbit
Clonality:	Polyclonal
Conjugate:	This CCT4 antibody is un-conjugated
Application:	Western Blotting (WB), Immunohistochemistry (Paraffin-embedded Sections) (IHC (p)), Immunocytochemistry (ICC), Flow Cytometry (FACS), Immunohistochemistry (Frozen Sections) (IHC (fro))

Product Details

Immunogen:	Amino acids R452-R539 of the human protein were used as the immunogen for the TCP1 delta antibody.
Isotype:	IgG
Purification:	Antigen affinity

Target Details

Target:	CCT4
Alternative Name:	TCP1 delta / CCT4 (CCT4 Products)
Background:	T-complex protein 1 subunit delta is a protein that in humans is encoded by the CCT4 gene. This gene is mapped to 2p15. The chaperonin containing TCP1 complex (CCT), also called the

Target Details

TCP1 ring complex, consists of 2 back-to-back rings, each containing 8 unique but homologous subunits, such as CCT4. CCT assists the folding of newly translated polypeptide substrates through multiple rounds of ATP-driven release and rebinding of partially folded intermediate forms. Substrates of CCT include the cytoskeletal proteins actin and tubulin, as well as alpha-transducin.

UniProt: [P50991](#)

Pathways: [Embryonic Body Morphogenesis](#)

Application Details

Application Notes: Optimal dilution of the TCP1 delta antibody should be determined by the researcher. Western blot: 0.1-0.5 µg/mL, IHC (FFPE): 0.5-1 µg/mL, IHC (Frozen): 0.5-1 µg/mL, ICC (FFPE): 0.5-1 µg/mL, FACS: 1-3 µg/10⁶ cells

Restrictions: For Research Use only

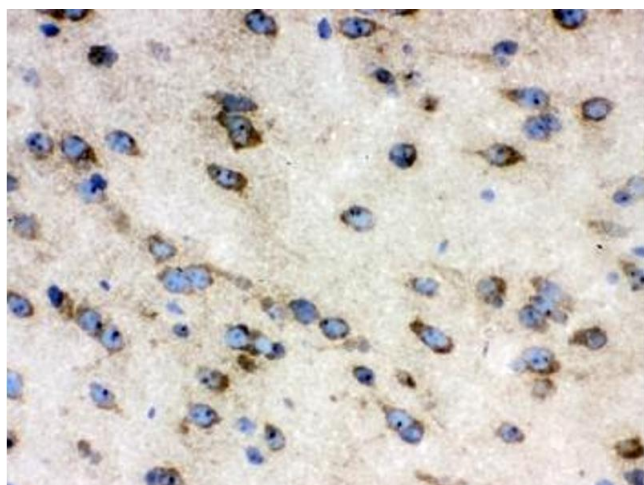
Handling

Buffer: 0.5 mg/mL if reconstituted with 0.2 mL sterile DI water

Storage: -20 °C

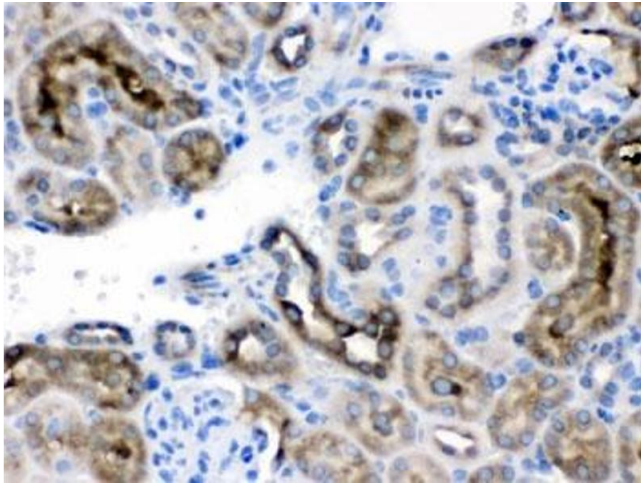
Storage Comment: After reconstitution, the TCP1 delta antibody can be stored for up to one month at 4°C. For long-term, aliquot and store at -20°C. Avoid repeated freezing and thawing.

Images



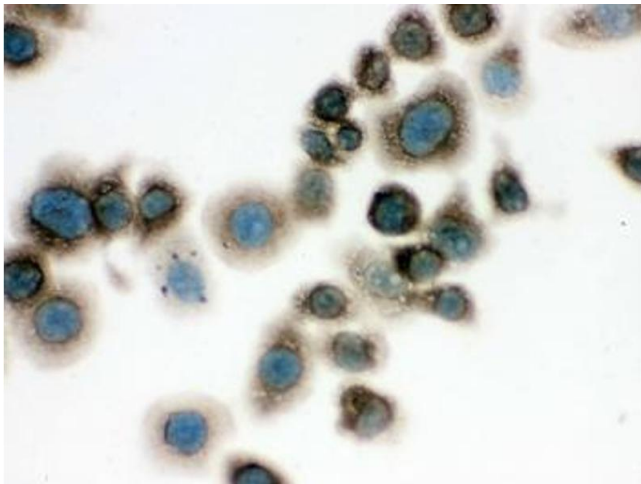
Immunohistochemistry

Image 1. IHC testing of frozen mouse brain tissue with TCP1 antibody.



Immunohistochemistry

Image 2. IHC testing of FFPE mouse kidney with TCP1 delta antibody. HIER: Boil the paraffin sections in pH 6, 10mM citrate buffer for 20 minutes and allow to cool prior to testing.



Immunocytochemistry

Image 3. ICC testing of FFPE mouse Neuro-2a cells with TCP1 delta antibody.

Please check the [product details page](#) for more images. Overall 9 images are available for ABIN4952801.