



Datasheet for ABIN4956415
anti-KRT12 antibody



[Go to Product page](#)

2 Images

Overview

| | |
|--------------|---|
| Quantity: | 100 µL |
| Target: | KRT12 |
| Reactivity: | Human |
| Host: | Guinea Pig |
| Clonality: | Polyclonal |
| Application: | Western Blotting (WB), Immunohistochemistry (IHC) |

Product Details

| | |
|-------------------|---|
| Immunogen: | Synthetic peptide of human keratin K12 (formerly also designated cytokeratin 12, DLS NNT MSL SVR T-C) |
| Cross-Reactivity: | Pig (Porcine), Human, Mouse (Murine) |

Target Details

| | |
|-------------------|---|
| Target: | KRT12 |
| Alternative Name: | Keratin K12 (KRT12 Products) |
| Background: | MW 55,000 (pI 4.9) intermediate filament polypeptide, keratin K12, detected by immunohistochemistry in the cornea only. Useful as a marker for corneal type differentiation (positive for epithelial cells of cornea) and for studying corneal epithelial stem cells. |

Application Details

| | |
|--------------------|---------------------------------|
| Application Notes: | Dilution for IHC: 1:100 - 1:200 |
|--------------------|---------------------------------|

Application Details

Restrictions: For Research Use only

Handling

Format: Liquid

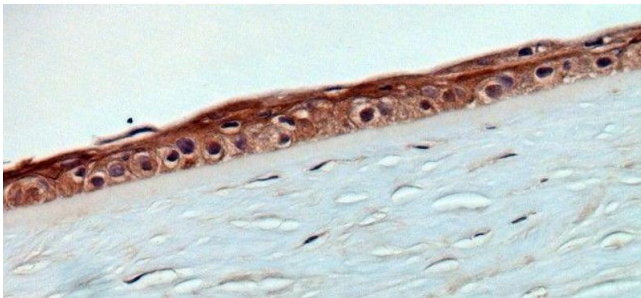
Buffer: serum

Preservative: Sodium azide

Precaution of Use: This product contains Sodium azide: a POISONOUS AND HAZARDOUS SUBSTANCE which should be handled by trained staff only.

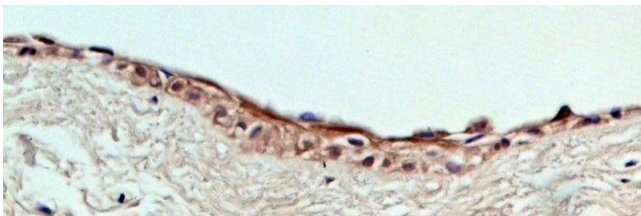
Storage: 4 °C/-20 °C

Images



Immunohistochemistry

Image 1. human cornea (courtesy of L. Langbein)



Immunohistochemistry

Image 2. human cornea (courtesy of L. Langbein)