

Datasheet for ABIN4956421

## anti-KRT16 antibody

3 Images



[Go to Product page](#)

### Overview

Quantity:	100 µL
Target:	KRT16
Reactivity:	Human
Host:	Guinea Pig
Clonality:	Polyclonal
Conjugate:	This KRT16 antibody is un-conjugated
Application:	Western Blotting (WB), Immunohistochemistry (IHC)

### Product Details

Immunogen:	Synthetic peptide of human keratin K16 (formerly also designated cytokeratin 16, C-KE QSS SSF SQG QSS)
Cross-Reactivity:	Human, Mouse (Murine)

### Target Details

Target:	KRT16
Alternative Name:	Keratin K16 ( <a href="#">KRT16 Products</a> )
Background:	MW 48,000 (pI 5.1) intermediate filament polypeptide, keratin K16, detected by immunohistochemistry in psoriatic skin, in the rete ridges of foot sole epidermis, in tongue, esophagus, exocervix and in squamous cell carcinoma of skin, tongue and cervix. In the hair follicle, staining was restricted to the outer root sheath. Completely non-reactive were cells of non-stratified epithelia (e.g. liver, colon).

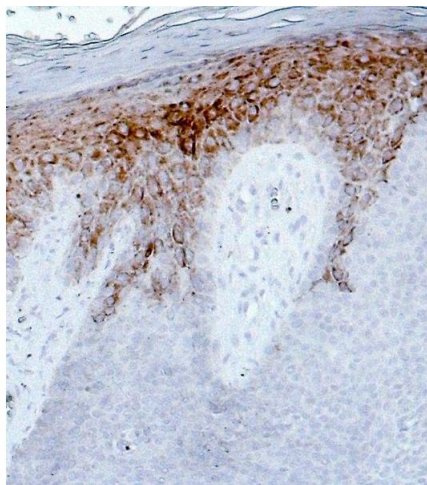
## Application Details

Application Notes:	Dilution for IHC: 1:100 - 1:200
Restrictions:	For Research Use only

## Handling

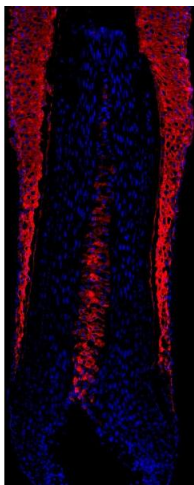
Format:	Liquid
Buffer:	serum
Preservative:	Sodium azide
Precaution of Use:	This product contains Sodium azide: a POISONOUS AND HAZARDOUS SUBSTANCE which should be handled by trained staff only.
Storage:	4 °C/-20 °C

## Images



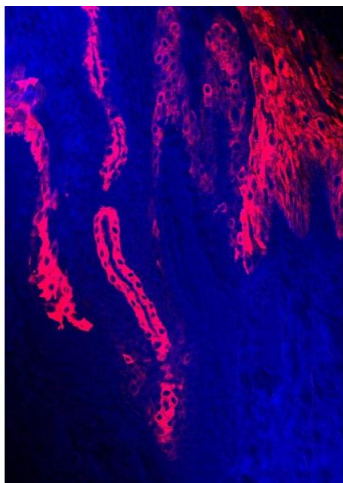
### Immunohistochemistry

**Image 1.** human back skin (courtesy of L. Langbein)



### Immunofluorescence

**Image 2.** human scalp hair (courtesy of L. Langbein)



#### Immunofluorescence

**Image 3.** human sole (courtesy of L. Langbein)