



[Go to Product page](#)

Datasheet for ABIN4978962

## L1TD1 Protein (AA 2-169) (His-SUMO Tag)

### 1 Image

#### Overview

Quantity:	200 µg
Target:	L1TD1
Protein Characteristics:	AA 2-169
Origin:	E. coli
Source:	Escherichia coli (E. coli)
Protein Type:	Recombinant
Purification tag / Conjugate:	This L1TD1 protein is labelled with His-SUMO Tag.
Application:	SDS-PAGE (SDS)

#### Product Details

Sequence:	SVLQVLHIPD ERLRKVAKPV EEVNAEIQRI VDDMFETMYA EEGIGLAATQ VDIHQRIIVI DVSENORDERL VLINPELLEK SGETGIEEGC LSIPEQRALV PRAEKVKIRA LDRDGKPFEL EADGLLAICI QHEMDHLVGK LFM DYLSPLK QQRIRQKVEK LDRLKARA
Purification:	SDS-PAGE
Purity:	> 90 %

#### Target Details

Target:	L1TD1
Alternative Name:	DEF ( <a href="#">L1TD1 Products</a> )
Background:	Roves the formyl group from the N-terminal Met of newly synthesized proteins. Requires at least a dipeptide for an efficient rate of reaction. N-terminal L-methionine is a prerequisite for

## Target Details

activity but the enzyme has broad specificity at other positions.

Molecular Weight: 35.19 kDa

UniProt: [P0A6K3](#)

## Application Details

Application Notes: Optimal working dilution should be determined by the investigator.

Restrictions: For Research Use only

## Handling

Format: Liquid

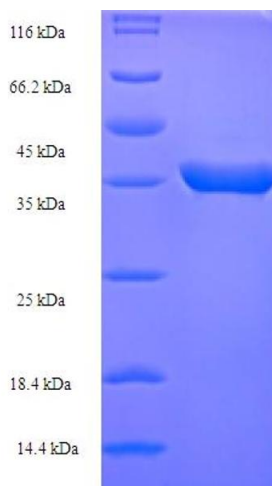
Concentration: 0.1-2 mg/mL

Buffer: 20 mM Tris-HCl based buffer, pH 8.0

Storage: -80 °C, 4 °C, -20 °C

Storage Comment: Store at -20°C, for extended storage, conserve at -20°C or -80°C. Repeated freezing and thawing is not recommended. Store working aliquots at 4°C for up to one week.

## Images



### SDS-PAGE

Image 1.