

Datasheet for ABIN497953
anti-PPM1K antibody (N-Term)

2 Images

[Go to Product page](#)

Overview

Quantity:	0.1 mL
Target:	PPM1K
Binding Specificity:	AA 1-324, N-Term
Reactivity:	Human, Mouse, Cow
Host:	Rabbit
Clonality:	Polyclonal
Conjugate:	This PPM1K antibody is un-conjugated
Application:	Western Blotting (WB), Immunohistochemistry (Paraffin-embedded Sections) (IHC (p))

Product Details

Immunogen:	Recombinant protein fragment contain a sequence corresponding to a region within amino acids 1 and 324 of Human PPM1K
Isotype:	IgG
Specificity:	Recognizes Protein phosphatase 1K/PPM1K. Cellular Localization: Mitochondrion matrix.
Cross-Reactivity (Details):	Species reactivity (expected):Mouse (92 %), Bovine (93 %). Species reactivity (tested):Human.
Purification:	Antigen-Affinity Chromatography.

Target Details

Target:	PPM1K
---------	-------

Target Details

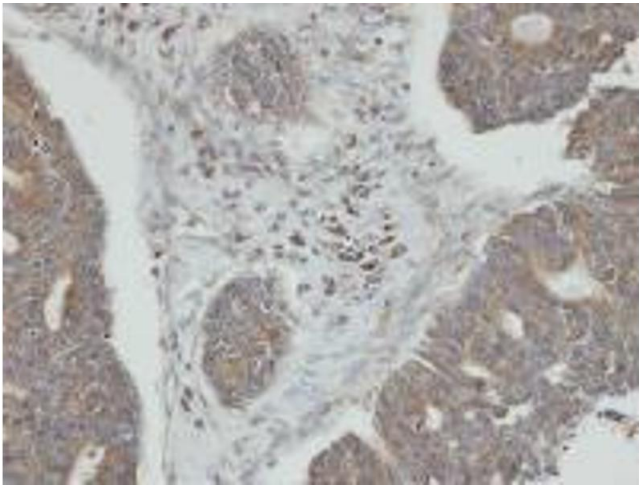
Abstract:	PPM1K Products
Background:	Regulates the mitochondrial permeability transition pore and is essential for cellular survival and development.Synonyms: PP2C domain-containing protein phosphatase 1K, PP2C-kappa, PP2C-like mitochondrial protein, PP2C-type mitochondrial, PP2CM, Protein phosphatase 2C isoform kappa
Molecular Weight:	41 kDa
Gene ID:	152926, 9606
UniProt:	Q8N3J5

Application Details

Application Notes:	Western blotting: 1/500-1/3000. Positive Control: 293T. Immunohistochemistry on Formalin-Fixed Paraffin-Embedded Sections: 1/100-1/500. Antigen retrieval using heat mediated 10 mM Citrate buffer or Tris-EDTA buffer PH8.0 isSuggested. Other applications not tested. Optimal dilutions are dependent on conditions and should be determined by the user.
Restrictions:	For Research Use only

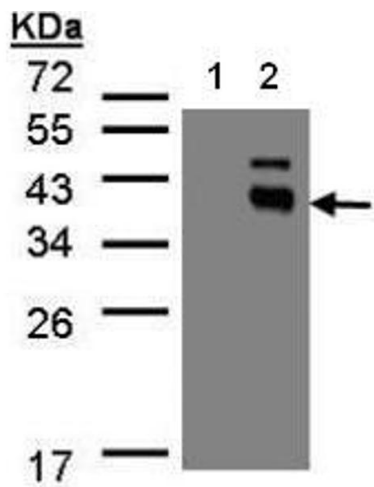
Handling

Format:	Liquid
Concentration:	1.0 mg/mL
Buffer:	0.1 M Tris, 0.1 M Glycine, 10 % Glycerol and 0.01 % Thimerosal as preservative.
Preservative:	Thimerosal (Merthiolate)
Precaution of Use:	This product contains thimerosal (merthiolate): a POISONOUS AND HAZARDOUS SUBSTANCE which should be handled by trained staff only.
Handling Advice:	Avoid repeated freezing and thawing.
Storage:	-20 °C
Storage Comment:	Store the antibody undiluted (in aliquots) at -20 °C.



Immunohistochemistry (Paraffin-embedded Sections)

Image 1. Immunohistochemistry: PP2C kappa/PPM1K antibody staining of Paraffin-Embedded endo mitral OVCA at 1/100 dilution.



Western Blotting

Image 2. Western Blot analysis: PP2C kappa/PPM1K antibody staining of transfected 293T cell line at 1/500, 12% SDS PAGE Lane 1: Non-transfected lysate. Lane 2: PPM1K transfected lysate.