

Datasheet for ABIN498002

## anti-G Protein-Coupled Receptor 126 antibody (N-Term)



[Go to Product page](#)

### 2 Images

#### Overview

Quantity:	50 µg
Target:	G Protein-Coupled Receptor 126 (GPR126)
Binding Specificity:	N-Term
Reactivity:	Human, Mouse
Host:	Rabbit
Clonality:	Polyclonal
Conjugate:	This G Protein-Coupled Receptor 126 antibody is un-conjugated
Application:	Immunohistochemistry (Paraffin-embedded Sections) (IHC (p))

#### Product Details

Immunogen:	GPR126 antibody was raised against synthetic peptide from human GPR126. .Remarks: Mouse Identity: 100% Mouse Similarity: 100%
Isotype:	IgG
Specificity:	Reacts with G Protein-Coupled Receptor GPR126.
Cross-Reactivity (Details):	Species reactivity (expected):Mouse. Species reactivity (tested):Human.
Purification:	Immunoaffinity Chromatography.

#### Target Details

Target:	G Protein-Coupled Receptor 126 (GPR126)
---------	---

## Target Details

---

Alternative Name:	GPR126 ( <a href="#">GPR126 Products</a> )
Background:	GPR126 is an Orphan-B GPCR, an Orphan member of the LNB-TM7 receptors, a sub-type family of the family B-G-protein coupled receptors with unusually long N-termini. Other members of this family have been shown to play important roles in development. GPR126 is highly expressed in the placenta as well as within the somites and nerve cells. Synonyms: DREG, Developmentally regulated G-protein-coupled receptor, G-protein coupled receptor 126, VIGR, Vascular inducible G protein-coupled receptor
Gene ID:	57211
NCBI Accession:	<a href="#">NP_001027566</a>
UniProt:	<a href="#">Q86SQ4</a>

## Application Details

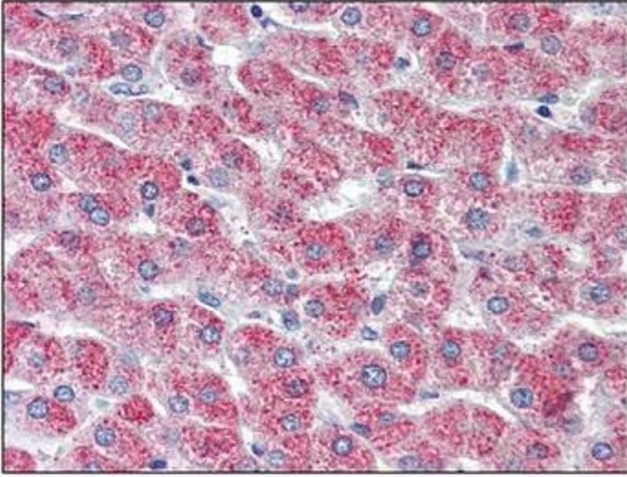
---

Application Notes:	Immunohistochemistry on Formalin Fixed Paraffin Embedded Tissues: 10 µg/mL (Requires pretreatment with Proteinase K). Other applications not tested. Optimal dilutions are dependent on conditions and should be determined by the user.
Restrictions:	For Research Use only

## Handling

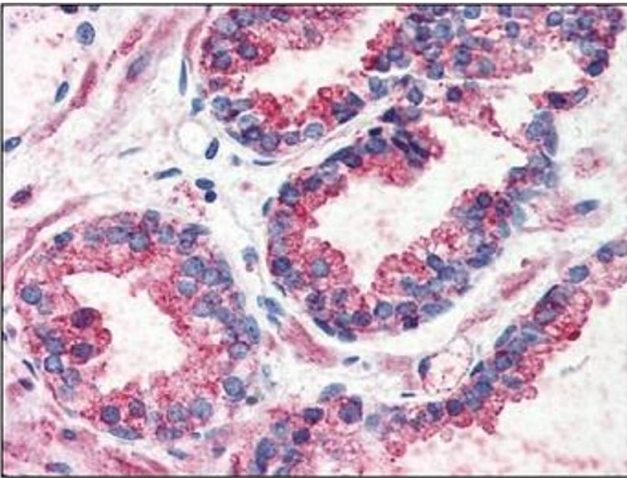
---

Concentration:	1.0 mg/mL
Buffer:	PBS containing 0.09 % Sodium Azide as preservative.
Preservative:	Sodium azide
Precaution of Use:	This product contains sodium azide: a POISONOUS AND HAZARDOUS SUBSTANCE which should be handled by trained staff only.
Handling Advice:	Avoid repeated freezing and thawing.
Storage:	4 °C/-20 °C
Storage Comment:	Store the antibody undiluted at 2-8 °C for one month or (in aliquots) at -20 °C to -70 °C for longer.



**Immunohistochemistry (Paraffin-embedded Sections)**

**Image 1. Immunohistochemistry:** GPR126 antibody staining of Formalin-Fixed, Paraffin-Embedded Human Liver.



**Immunohistochemistry (Paraffin-embedded Sections)**

**Image 2. Immunohistochemistry:** GPR126 antibody staining of Formalin-Fixed, Paraffin-Embedded Human Prostate.