



[Go to Product page](#)

Datasheet for ABIN498375

## anti-COL4a2 antibody (Chain alpha 2)

### 2 Images

#### Overview

Quantity:	0.1 mg
Target:	COL4a2 (COL4A2)
Binding Specificity:	Chain alpha 2
Reactivity:	Human, Mouse
Host:	Rabbit
Clonality:	Polyclonal
Conjugate:	This COL4a2 antibody is un-conjugated
Application:	Western Blotting (WB), Immunofluorescence (IF), Immunohistochemistry (Paraffin-embedded Sections) (IHC (p))

#### Product Details

Specificity:	This antibody detects endogenous levels of COL4A2 protein. (region surrounding Pro175)
Cross-Reactivity (Details):	Species reactivity (tested):Human and Mouse.
Purification:	Affinity chromatography
Purity:	> 95 % by SDS-PAGE

#### Target Details

Target:	COL4a2 (COL4A2)
Alternative Name:	Collagen Type IV alpha 2 Chain ( <a href="#">COL4A2 Products</a> )
Background:	The extensive family of COL gene products (collagens) is composed of several chain types,

## Target Details

---

including fibril-forming interstitial collagens (Types I, II, III and V) and basement membrane collagens (Type IV), each type containing multiple isoforms. Collagens are fibrous, extracellular matrix proteins with high tensile strength and are the major components of connective tissue, such as tendons and cartilage. All collagens contain a triple helix domain and frequently show lateral self-association in order to form complex connective tissues. Several collagens also play a role in cell adhesion, important for maintaining normal tissue architecture and function. Synonyms: COL4A2

Molecular Weight: approx. 150 kDa

Gene ID: 1284

NCBI Accession: [NP\\_001837](#)

UniProt: [P08572](#)

## Application Details

---

Application Notes: Western Blot: 1/500 - 1/1000. Immunohistochemistry: 1/50 - 1/200. Immunofluorescence: 1/50 - 1/200.  
Other applications not tested.  
Optimal dilutions are dependent on conditions and should be determined by the user.

Restrictions: For Research Use only

## Handling

---

Concentration: 1,0 mg/mL

Buffer: PBS, pH 7.2, 0.05 % sodium azide

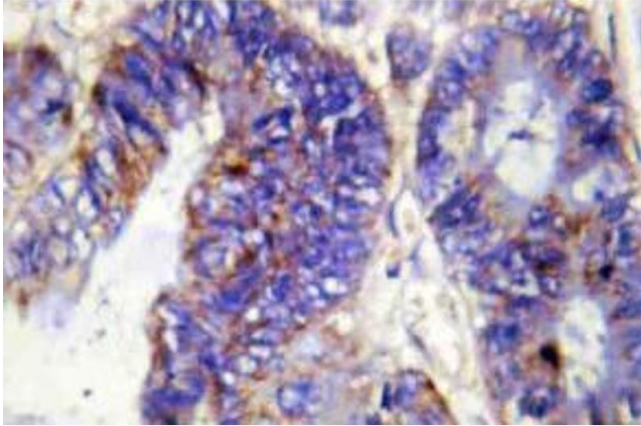
Preservative: Sodium azide

Precaution of Use: This product contains sodium azide: a POISONOUS AND HAZARDOUS SUBSTANCE which should be handled by trained staff only.

Handling Advice: Avoid repeated freezing and thawing.

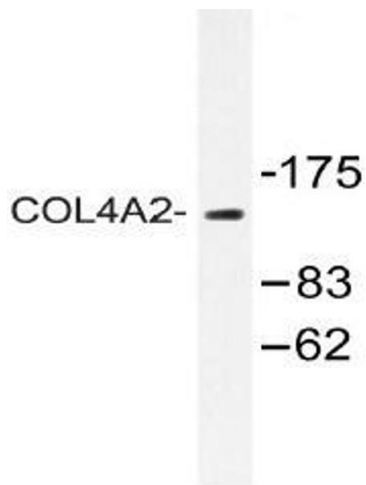
Storage: 4 °C/-20 °C

Storage Comment: Store the antibody undiluted at 2-8 °C for one month or (in aliquots) at -20 °C for longer.



### Immunohistochemistry (Paraffin-embedded Sections)

**Image 1. Immunohistochemistry (IHC)** analyzes of COL4A2 antibody in paraffin-embedded human colon carcinoma tissue.



### Western Blotting

**Image 2. Western blot (WB)** analysis of COL4A2 antibody in extracts from Jurkat cells.