

Datasheet for ABIN498442

anti-COL1A2 antibody (Chain alpha 2)**2** Images**1** Publication[Go to Product page](#)

Overview

Quantity:	0.1 mg
Target:	COL1A2
Binding Specificity:	Chain alpha 2
Reactivity:	Human
Host:	Rabbit
Clonality:	Polyclonal
Conjugate:	This COL1A2 antibody is un-conjugated
Application:	Western Blotting (WB), Immunofluorescence (IF), Immunohistochemistry (Paraffin-embedded Sections) (IHC (p))

Product Details

Specificity:	This antibody detects endogenous levels of COL1A2 protein. (region surrounding Thr501)
Cross-Reactivity (Details):	Species reactivity (tested):Human.
Purification:	Affinity Chromatography using epitope-specific immunogen.

Target Details

Target:	COL1A2
Abstract:	COL1A2 Products
Background:	The extensive family of COL gene products (collagens) is composed of several chain types, including fibril-forming interstitial collagens (types I, II, III and V) and basement membrane collagens (type IV), each type containing multiple isoforms. Collagens are fibrous, extracellular

Target Details

matrix proteins with high tensile strength and are the major components of connective tissue, such as tendons and cartilage. All collagens contain a triple helix domain and frequently show lateral self-association in order to form complex connective tissues. Several collagens also play a role in cell adhesion, important for maintaining normal tissue architecture and function. Synonyms: Alpha-2 type I collagen, COL1A2

Molecular Weight: approx. 125 kDa

Gene ID: 1278

NCBI Accession: [NP_000080](#)

UniProt: [P08123](#)

Application Details

Application Notes: Western Blot: 1/500 - 1/1000. Immunohistochemistry: 1/50 - 1/200. Immunofluorescence: 1/50 - 1/200.
Other applications not tested.
Optimal dilutions are dependent on conditions and should be determined by the user.

Restrictions: For Research Use only

Handling

Concentration: 1.0 mg/mL

Buffer: Phosphate buffered saline (PBS), pH ~7.2, 0.05 % Sodium Azide

Preservative: Sodium azide

Precaution of Use: This product contains sodium azide: a POISONOUS AND HAZARDOUS SUBSTANCE which should be handled by trained staff only.

Handling Advice: Avoid repeated freezing and thawing.

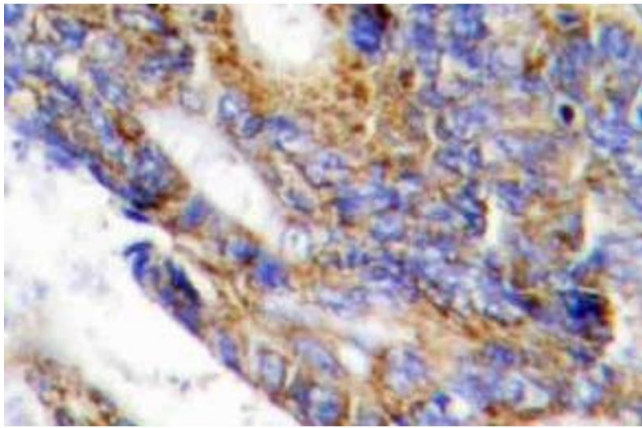
Storage: 4 °C/-20 °C

Storage Comment: Store the antibody undiluted at 2-8 °C for one month or (in aliquots) at -20 °C for longer.

Publications

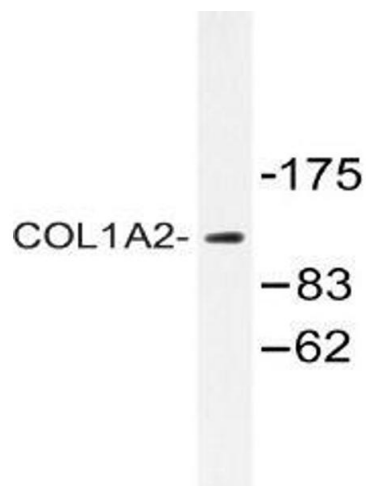
Product cited in: Rao, Kirschen, Szczurkowska, Di Antonio, Wang, Ge, Shelly: "Repositioning of Somatic Golgi Apparatus Is Essential for the Dendritic Establishment of Adult-Born Hippocampal Neurons." in: **The Journal of neuroscience : the official journal of the Society for Neuroscience**, Vol. 38,

Images



Immunohistochemistry (Paraffin-embedded Sections)

Image 1. Immunohistochemistry (IHC) analyzes of COL1A2 antibody in paraffin-embedded human colon carcinoma tissue.



Western Blotting

Image 2. Western blot (WB) analysis of COL1A2 antibody in extracts from 293 cells.