

Datasheet for ABIN4986946

IL-21 ELISA Kit[Go to Product page](#)**1** Image

Overview

Quantity:	96 tests
Target:	IL-21 (IL21)
Reactivity:	Human
Method Type:	Sandwich ELISA
Detection Range:	31.25-2000 pg/mL
Minimum Detection Limit:	31.25 pg/mL
Application:	ELISA

Product Details

Sample Type:	Cell Culture Supernatant, Serum, Plasma (heparin), Plasma (citrate), Plasma (EDTA)
Analytical Method:	Quantitative
Detection Method:	Colorimetric
Specificity:	Natural and recombinant Human IL-21 Ligand
Sensitivity:	15 pg/mL
Material not included:	<ul style="list-style-type: none">• Microplate reader.• Pipettes and pipette tips.• EP tube Deionized or distilled water.

Target Details

Target:	IL-21 (IL21)
---------	--------------

Target Details

Alternative Name: IL-21 ([IL21 Products](#))

Background: Interleukin-21(IL-21) and its receptor play an important role in the regulation of the immune system. IL-21R, also called NILR (novel interleukin receptor), is a type I cytokine receptor with 4 conserved cysteine residues and an extracellular WSXWS motif. The biological effects of IL-21 include induction of differentiation of T-cells-stimulated B-cells into plasma cells and memory B-cells, stimulation (in conjunction) with IL-4 of IgG production, and induction of apoptotic effects in native B-cells and stimulated B-cells in the absence of T-cell signaling. Additionally, IL-21 promotes the anti-tumor activity of CD8+ T-cells and NK cells. IL-21 exerts its effect through binding to a specific type I cytokine receptor, IL-21R, which also contains the gamma chain found in other cytokine receptors including IL-2, IL-4, IL-7, IL-9 and IL-15. The IL-21/IL-21R interaction appears to play an important role in B and T cell proliferation after antigen stimulation and NK cell maturation.

Pathways: [JAK-STAT Signaling](#), [Regulation of Leukocyte Mediated Immunity](#), [Positive Regulation of Immune Effector Process](#), [Production of Molecular Mediator of Immune Response](#)

Application Details

Application Notes: Detection Wavelength: 450 nm

Sample Volume: 20 µL

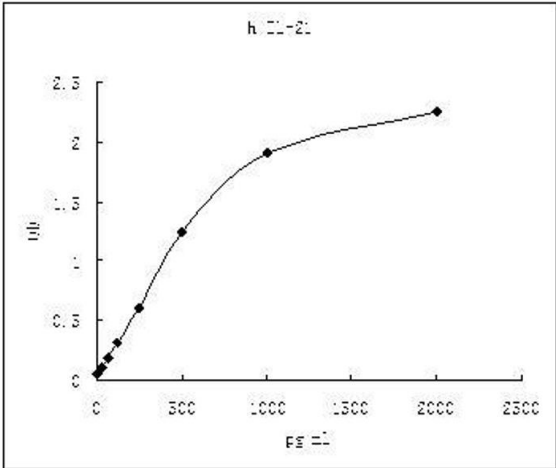
Assay Time: 3 h

Plate: Pre-coated

Restrictions: For Research Use only

Handling

Storage: 4 °C



ELISA

Image 1.