



[Go to Product page](#)

Datasheet for ABIN4987075
Soluble E-Selectin ELISA Kit

1 Image

Overview

Quantity:	96 tests
Target:	Soluble E-Selectin (sE-Selectin)
Reactivity:	Human
Method Type:	Sandwich ELISA
Detection Range:	780-50000 pg/mL
Minimum Detection Limit:	780 pg/mL
Application:	ELISA

Product Details

Sample Type:	Cell Culture Supernatant, Serum, Plasma (heparin), Plasma (citrate), Plasma (EDTA)
Analytical Method:	Quantitative
Detection Method:	Colorimetric
Specificity:	Natural and recombinant Human sE-selectin Ligand
Sensitivity:	200 pg/mL
Material not included:	<ul style="list-style-type: none">• Microplate reader.• Pipettes and pipette tips.• EP tube Deionized or distilled water.

Target Details

Target:	Soluble E-Selectin (sE-Selectin)
---------	----------------------------------

Target Details

Alternative Name: sE-Selectin ([sE-Selectin Products](#))

Background: E-Selectin (also known as Endothelial Leukocyte Adhesion Molecule-1, ELAM-1, or CD62E) is a 115 kDa, type I transmembrane glycoprotein expressed only on endothelial cells and only after activation by inflammatory cytokines (IL-1 β or TNF- α) or endotoxins (1-4). Expression is transitory, reaching a maximum within about 6 hours of stimulation and then declining with shedding of soluble E-Selectin (1-5). Cell-surface E-Selectin is a mediator of the rolling attachment of leukocytes to the endothelium, an essential step in extravasation of leukocytes at the site of inflammation (1-6) thereby playing a key role in localized inflammatory response. E-Selectin is believed to be particularly important in inflammation involving the skin (4). The extracellular part of E-Selectin includes a calcium-dependent C2-type lectin domain, an epidermal growth factor (EGF) domain, and six repeats of a complement-regulatory-protein-like sequence (1-4). E-Selectin binds sialyl Lewis X (sLex), a sialic acid-galactose-N-acetylglucosamine-fructose tetrasaccharide, but the actual recognition is thought to be for a specific presentation of those glycosyl units in a precise three-dimensional configuration on a specific glycoprotein rather than for that particular carbohydrate (4). Soluble E-Selectin (sE-Selectin) is found in the blood of healthy individuals (7, 8), probably arising from proteolytic cleavage of the surface-expressed molecule (5, 9). Elevated levels of sE-Selectin in serum have been reported in a variety of pathological conditions (8, 10-14). Although it might be anticipated that sE-Selectin would suppress leukocyte migration by competing with surface-associated E-Selectin, it may actually activate neutrophils and act as a pro-inflammatory agent (15).

Application Details

Application Notes: Detection Wavelength: 450 nm

Sample Volume: 20 μ L

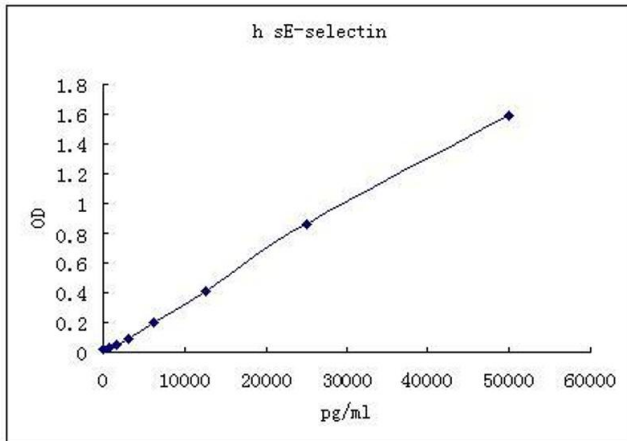
Assay Time: 3 h

Plate: Pre-coated

Restrictions: For Research Use only

Handling

Storage: 4 $^{\circ}$ C



ELISA

Image 1.