

Datasheet for ABIN499269

**anti-TUBA1A antibody (N-Term)**[Go to Product page](#)**1** Image**2** Publications

## Overview

Quantity:	0.1 mg
Target:	TUBA1A (Tuba1a)
Binding Specificity:	N-Term
Reactivity:	Human, Mouse, Rat
Host:	Chicken
Clonality:	Polyclonal
Conjugate:	This TUBA1A antibody is un-conjugated
Application:	Western Blotting (WB), Enzyme Immunoassay (EIA)

## Product Details

Immunogen:	Tubulin antibody was raised against a 16 amino acid peptide near the amino terminus of human Tubulin.
Isotype:	IgG
Specificity:	This antibody reacts to Alpha-tubulin.
Purification:	Affinity chromatography purified via peptide column

## Target Details

Target:	TUBA1A (Tuba1a)
Alternative Name:	alpha Tubulin / TUBA1A / TUBA3 ( <a href="#">Tuba1a Products</a> )
Background:	Alpha-tubulin belongs to the tubulin superfamily, which is composed of six distinct families.

## Target Details

Along with beta-tubulins, alpha-tubulins are the major components of microtubules. These microtubules are involved in a wide variety of cellular activities ranging from mitosis and transport events to cell movement and the maintenance of cell shape. Alpha- and beta-tubulin dimers are assembled to 13 protofilaments that form a microtubule of 22-nm diameter. Tyrosine ligase adds a C-terminal tyrosine to monomeric alpha-tubulin. Assembled microtubules can again be detyrosinated by a cytoskeleton-associated carboxypeptidase. Another post-translational modification of detyrosinated alpha-tubulin is C-terminal polyglutamylation, which is characteristic of microtubules in neuronal cells and the mitotic spindle. Like GAPDH and beta-Actin, this antibody makes an excellent loading control in immunoblots. Synonyms: Alpha-tubulin 3, Tubulin B-alpha-1, Tubulin alpha-1A chain, Tubulin alpha-3 chain

Gene ID:	7846
UniProt:	<a href="#">Q71U36</a>
Pathways:	<a href="#">Microtubule Dynamics, M Phase</a>

## Application Details

Application Notes:	ELISA. Western Blot: Tubulin antibody can be used for detection of Tubulin at 1 - 2 µg/mL. Other applications not tested. Optimal dilutions are dependent on conditions and should be determined by the user.
Restrictions:	For Research Use only

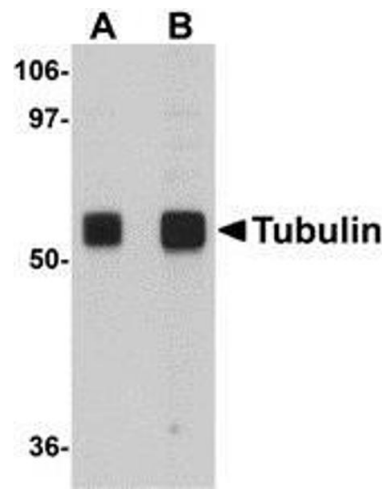
## Handling

Buffer:	PBS containing 0.02 % sodium azide.
Preservative:	Sodium azide
Precaution of Use:	This product contains sodium azide: a POISONOUS AND HAZARDOUS SUBSTANCE which should be handled by trained staff only.
Storage:	4 °C
Storage Comment:	Store the antibody undiluted at 2-8 °C.

## Publications

Product cited in:	Takeuchi, Wong, Schneider, Freeze, Takeuchi, Berardinelli, Ito, Lee, Nelson, Haltiwanger: "Variant in human POFUT1 reduces enzymatic activity and likely causes a recessive microcephaly,
-------------------	---

global developmental delay with cardiac and vascular features." in: **Glycobiology**, Vol. 28, Issue 5, pp. 276-283, (2018) ([PubMed](#)).



**Western Blotting**

**Image 1.** Western blot analysis of Tubulin in rat brain tissue lysate with AP30046PU-N Tubulin antibody at (A) 0.5 and (B) 1 µg/ml.