

Datasheet for ABIN499285  
**anti-AP2M1 antibody (C-Term)**[Go to Product page](#)

## 2 Images

## Overview

Quantity:	0.1 mg
Target:	AP2M1
Binding Specificity:	C-Term
Reactivity:	Human, Mouse, Rat
Host:	Chicken
Clonality:	Polyclonal
Conjugate:	This AP2M1 antibody is un-conjugated
Application:	Western Blotting (WB), Immunohistochemistry (Paraffin-embedded Sections) (IHC (p)), Enzyme Immunoassay (EIA)

## Product Details

Immunogen:	AP2M1 antibody was raised against a 16 amino acid peptide near the carboxy terminus of human AP2M1.
Isotype:	IgG
Specificity:	This antibody reacts to AP2M1.
Purification:	Affinity chromatography purified via peptide column

## Target Details

Target:	AP2M1
Abstract:	<a href="#">AP2M1 Products</a>

## Target Details

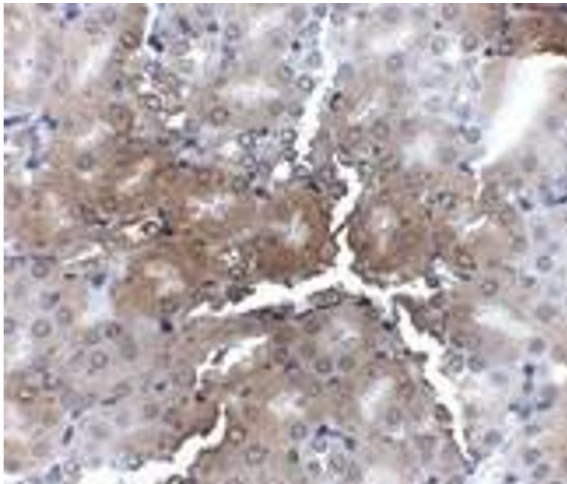
Background:	<p>The heterotetrameric coat assembly protein complex, also known as the adaptor-related protein complex 2 (AP-2), belongs to the adaptor complexes medium subunits family. The mu 1 subunit of the AP-2 complex (AP2M1) is required for the activity of a vacuolar ATPase, which is responsible for proton pumping occurring in the acidification of endosomes and lysosomes. AP2M1 has also been shown to associate with the HIV-1 protein Nef, suggesting that Nef may use AP-2 complex to enhance the rate of endocytosis of both CD4 and class I MHC. AP2M1 may also play an important role in regulating the intracellular trafficking and function of cytotoxic T-lymphocyte associated (CTLA)-4 protein. At least two isoforms of AP2M1 are known to exist. Synonyms: AP-2 mu-2 chain, Adaptin-mu2, CLAPM1, Clathrin assembly protein complex 2 medium chain, Clathrin coat assembly protein AP50, Clathrin coat-associated protein AP5, HA2 50 kDa subunit, KIAA0109, Plasma membrane adaptor AP-2 50 kDa protein</p>
Gene ID:	1173
NCBI Accession:	<a href="#">NP_004059</a>
UniProt:	<a href="#">Q96CW1</a>
Pathways:	<a href="#">EGFR Signaling Pathway</a> , <a href="#">Neurotrophin Signaling Pathway</a> , <a href="#">EGFR Downregulation</a> , <a href="#">SARS-CoV-2 Protein Interactome</a>

## Application Details

Application Notes:	<p>ELISA. Western Blot: AP2M1 antibody can be used for detection of AP2M1 at 1 - 2 µg/mL.</p> <p>Immunohistochemistry.</p> <p>Other applications not tested.</p> <p>Optimal dilutions are dependent on conditions and should be determined by the user.</p>
Restrictions:	For Research Use only

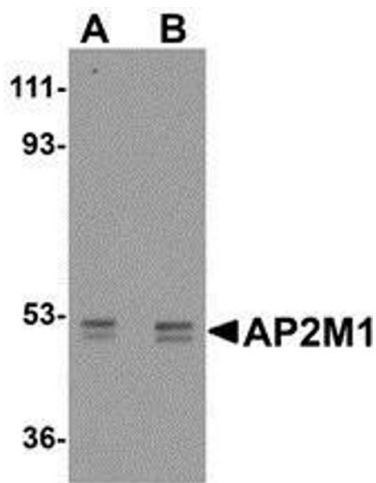
## Handling

Buffer:	PBS containing 0.02 % sodium azide.
Preservative:	Sodium azide
Precaution of Use:	This product contains sodium azide: a POISONOUS AND HAZARDOUS SUBSTANCE which should be handled by trained staff only.
Storage:	4 °C
Storage Comment:	Store the antibody undiluted at 2-8 °C.



Immunohistochemistry (Paraffin-embedded Sections)

**Image 1.** Immunohistochemistry of AP2M1 in mouse kidney tissue with AP2M1 antibody at 2.5 µg/ml.



Western Blotting

**Image 2.** Western blot analysis of AP2M1 in human kidney tissue lysate with AP30054PU-N AP2M1 antibody at (A) 1 and (B) 2 µg/ml.