

Datasheet for ABIN499307

anti-APH1A antibody (N-Term)[Go to Product page](#)**1** Image

Overview

Quantity:	0.1 mg
Target:	APH1A
Binding Specificity:	N-Term
Reactivity:	Human, Mouse
Host:	Rabbit
Clonality:	Polyclonal
Conjugate:	This APH1A antibody is un-conjugated
Application:	Western Blotting (WB), Enzyme Immunoassay (EIA)

Product Details

Immunogen:	APH1 antibody was raised against a 13 amino acid peptide from near the amino terminus of human APH1a.
Isotype:	IgG
Specificity:	This antibody reacts to APH1a.
Purification:	Affinity chromatography purified via peptide column

Target Details

Target:	APH1A
Alternative Name:	APH1A (APH1A Products)
Background:	APH1 was initially identified as a component of the Notch pathway in <i>C. elegans</i> . Along with

Target Details

nicastrin, PEN2, and presenilin-1 APH1 is an essential component of the γ secretase complex which cleave the amyloid precursor protein (APP) at what are known as the gamma and epsilon sites and can lead to the accumulation of the Amyloid beta peptide A beta cleavage product that is associated with Alzheimer's disease. APH1 exists in at least three distinct isoforms with APH1alpha as the principal isoform present in the gamma secretase complex. Mice deficient in this isoform, but not the other two, were lethal at E10.5, with impaired vascular and neural development observed. Despite its predicted molecular weight, APH1 protein often migrates at aberrant locations in SDS-PAGE. Synonyms: APH-1A, Aph-1 alpha, CGI-78, Gamma-secretase subunit APH-1A, PSF, Presenilin-stabilization factor

Gene ID: 51107

UniProt: [Q96BI3](#)

Pathways: [Notch Signaling](#), [Neurotrophin Signaling Pathway](#)

Application Details

Application Notes: ELISA. Western Blot: APH1 antibody can be used for detection of APH1 at 0.5 - 1 μ g/mL.
Other applications not tested.
Optimal dilutions are dependent on conditions and should be determined by the user.

Restrictions: For Research Use only

Handling

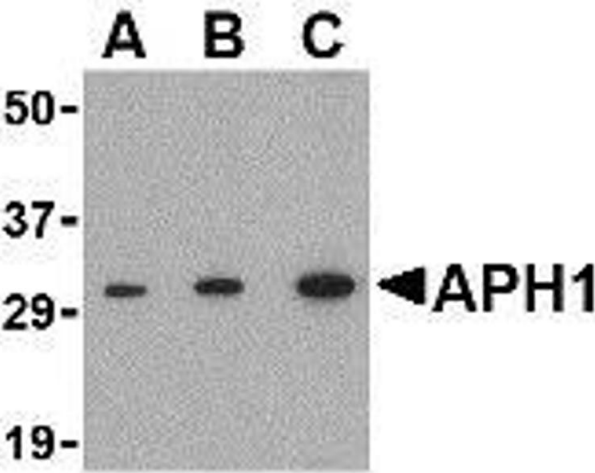
Buffer: PBS containing 0.02 % sodium azide.

Preservative: Sodium azide

Precaution of Use: This product contains sodium azide: a POISONOUS AND HAZARDOUS SUBSTANCE which should be handled by trained staff only.

Storage: 4 °C

Storage Comment: Store the antibody undiluted at 2-8 °C.



Western Blotting

Image 1. Western blot analysis of APH1 in RAW264.7 cell lysate with AP30066PU-N APH1 antibody at (A) 0.5, (B) 1 and (C) 2 µg/ml.