

Datasheet for ABIN499331
anti-HUWE1 antibody (C-Term)

3 Images

[Go to Product page](#)

Overview

Quantity:	0.1 mg
Target:	HUWE1
Binding Specificity:	C-Term
Reactivity:	Human, Mouse, Rat
Host:	Rabbit
Clonality:	Polyclonal
Conjugate:	This HUWE1 antibody is un-conjugated
Application:	Western Blotting (WB), Immunofluorescence (IF), Enzyme Immunoassay (EIA)

Product Details

Immunogen:	A 19 amino acid peptide from near the carboxy terminus of Human ARF-BP1
Isotype:	IgG
Specificity:	This antibody detects ARF-BP1 at C-term.
Purification:	Affinity chromatography purified via peptide column

Target Details

Target:	HUWE1
Alternative Name:	HUWE1 / UREB1 (HUWE1 Products)
Background:	The ARF tumor suppressor is a critical regulator of p53 stability. In addition to p53, ARF1 binds to other proteins such as MDM2 and ARF-BP1, a large protein containing HECT, UBA and WWE

Target Details

motifs. ARF-BP1 directly binds and ubiquitinates p53, this activity is inhibited by ARF, indicating that ARF-BP1 is a critical mediator of the p53-dependent and p53-independent tumor suppressor functions of ARF. ARF-BP1 can also catalyze the polyubiquitination of Mcl-1, an anti-apoptotic Bcl-2 family member involved in DNA damage-induced apoptosis. Elimination of ARF-BP1 expression by RNA interference stabilized Mcl-1 protein, resulting in an attenuation of apoptosis induced by DNA-damage agents. Synonyms: ARF-BP1, ARF-binding protein 1, E3 ubiquitin-protein ligase HUWE1, HECT, HSPC272, HectH9, Homologous to E6AP carboxyl terminus homologous protein 9, KIAA0312, KIAA1578, LASU1, Large structure of URB1, Mcl-1 ubiquitin ligase E3, Mule, UBA and WWE domain-containing protein 1, URB-1, URB-binding protein 1, Upstream regulatory element-binding protein 1

Gene ID: 10075

NCBI Accession: [NP_113584](#)

UniProt: [Q7Z6Z7](#)

Application Details

Application Notes: ELISA. Western Blot: ARF-BP1 antibody can be used for detection of ARF-BP1 at 1 - 2 µg/mL. Immunocytochemistry. Other applications not tested. Optimal dilutions are dependent on conditions and should be determined by the user.

Restrictions: For Research Use only

Handling

Buffer: PBS containing 0.02 % Sodium Azide as preservative

Preservative: Sodium azide

Precaution of Use: This product contains sodium azide: a POISONOUS AND HAZARDOUS SUBSTANCE which should be handled by trained staff only.

Handling Advice: Avoid repeated freezing and thawing.

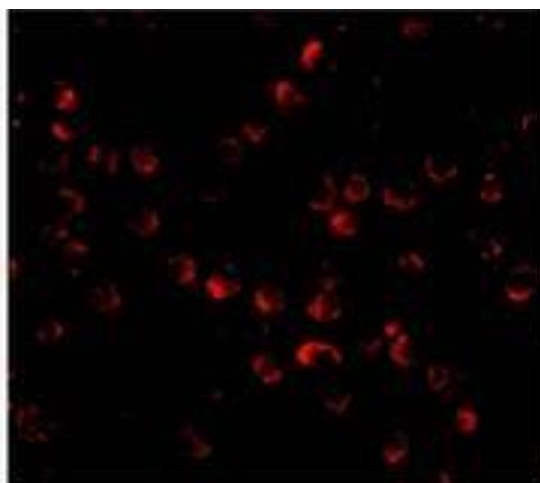
Storage: 4 °C/-20 °C

Storage Comment: Store undiluted at 2-8 °C for one month or (in aliquots) at -20 °C for longer.



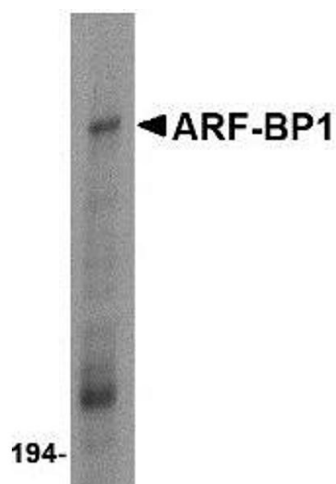
Immunofluorescence

Image 1. Immunocytochemistry of ARF-BP1 in Daudi cells with AP30078PU-N ARF-BP1 antibody at 5 µg/ml.



Immunofluorescence

Image 2. Immunofluorescence of ARF-BP1 in Daudi cells with AP30078PU-N ARF-BP1 antibody at 20 µg/ml.



Western Blotting

Image 3. Western blot analysis of ARF-BP1 in Daudi cell lysate with ARF-BP1 antibody at 1 µg/ml.