

Datasheet for ABIN499335
anti-ARL15 antibody (Center)



[Go to Product page](#)

2 Images

Overview

Quantity:	0.1 mg
Target:	ARL15
Binding Specificity:	Center
Reactivity:	Human, Mouse, Rat
Host:	Rabbit
Clonality:	Polyclonal
Conjugate:	This ARL15 antibody is un-conjugated
Application:	Western Blotting (WB), Immunohistochemistry (Paraffin-embedded Sections) (IHC (p)), Enzyme Immunoassay (EIA)

Product Details

Immunogen:	ARL15 antibody was raised against a 17 amino acid peptide near the center of human ARL15.
Isotype:	IgG
Specificity:	This antibody reacts to ARL15.
Purification:	Affinity chromatography purified via peptide column

Target Details

Target:	ARL15
Alternative Name:	ARL15 / ARFRP2 (ARL15 Products)
Background:	ADP-ribosylation factors (ARFs) are highly conserved guanine nucleotide binding proteins that

Target Details

enhance the ADP-ribosyltransferase activity of cholera toxin. ARFs are important in eukaryotic vesicular trafficking pathways and they play an essential role in the activation of phospholipase D (PC-PLD). ARL15 (ADP-ribosylation factor-like 15), is a member of the ARF family of the Ras superfamily of small GTPases that are known to be involved in multiple regulatory pathways altered in human carcinogenesis. Other members of this protein family include ARL11, thought to be a tumor suppressor and may play a role in the regulation of apoptosis, ARL2 which plays an important role in microtubule dynamics and cell cycle progression, and ARL4, which may play a role in neurogenesis during embryonic development. The gene encoding ARL15 maps to chromosome 5p15 in humans. At least three isoforms of ARL15 are known to exist. Synonyms: ADP-ribosylation factor-like protein 15, ADP-ribosylation factor-related protein 2, ARF-related protein 2

Gene ID: 54622

NCBI Accession: [NP_061960](#)

UniProt: [Q9NXU5](#)

Application Details

Application Notes: ELISA. Western Blot: ARL15 antibody can be used for detection of Arl15 at 1 - 2 µg/mL. Immunohistochemistry. Other applications not tested. Optimal dilutions are dependent on conditions and should be determined by the user.

Restrictions: For Research Use only

Handling

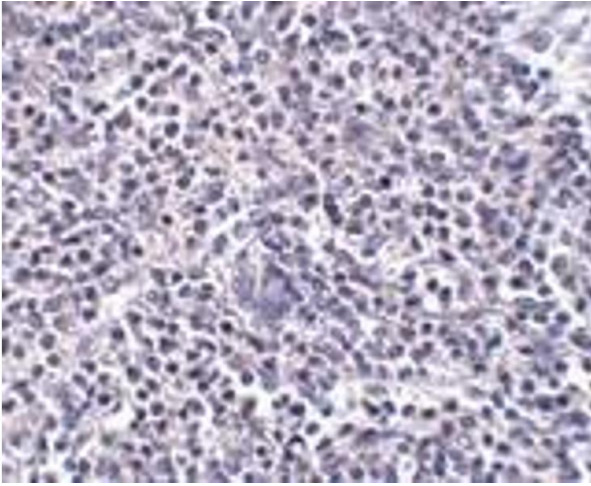
Buffer: PBS containing 0.02 % sodium azide.

Preservative: Sodium azide

Precaution of Use: This product contains sodium azide: a POISONOUS AND HAZARDOUS SUBSTANCE which should be handled by trained staff only.

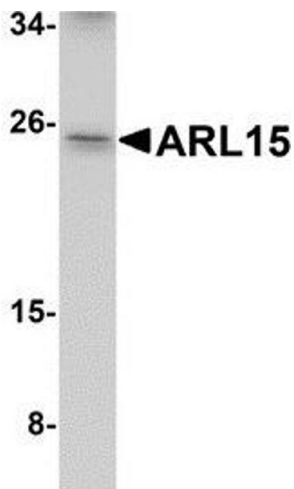
Storage: 4 °C

Storage Comment: Store the antibody undiluted at 2-8 °C.



Immunohistochemistry (Paraffin-embedded Sections)

Image 1. Immunohistochemistry of ARL15 in human spleen tissue with ARL15 antibody at 5 µg/ml.



Western Blotting

Image 2. Western blot analysis of ARL15 in K562 cell lysate with AP30080PU-N ARL15 antibody at 1 µg/ml.