

Datasheet for ABIN499351  
**anti-ATF6 antibody (C-Term)**



[Go to Product page](#)

3 Images

## Overview

Quantity:	0.1 mg
Target:	ATF6
Binding Specificity:	C-Term
Reactivity:	Human, Mouse
Host:	Rabbit
Clonality:	Polyclonal
Conjugate:	This ATF6 antibody is un-conjugated
Application:	Western Blotting (WB), Immunofluorescence (IF), Enzyme Immunoassay (EIA)

## Product Details

Immunogen:	Human ATF6 (C-Terminus) Peptide
Isotype:	IgG
Specificity:	This antibody was raised against a 16 amino acid peptide from near the carboxy terminus of Human ATF6. ATF6 has two isoforms (ATF6 $\alpha$ and ATF6 $\beta$ ), only ATF6 $\alpha$ is recognized by this antibody.
Purification:	Affinity chromatography purified via peptide column

## Target Details

Target:	ATF6
Alternative Name:	ATF6 $\alpha$ ( <a href="#">ATF6 Products</a> )

## Target Details

Background:	Disruptions of protein folding and maturation in the endoplasmic reticulum (ER) result in the activation of the unfolded protein response (UPR), an integrated cellular signaling pathway that transmits information from the ER lumen to the cytoplasm and nucleus. Activating transcription factor 6 (ATF6) as well as the ER-transmembrane protein kinases IRE1p and PERK are the major transducers of the UPR . ATF6 is an ER transmembrane protein that is normally bound to the ER chaperone GRP78, but upon ER stress is released from GRP78 and proteolytically cleaved to yield a cytosolic fragment which then migrates to the nucleus, and together with the transcription factor XBP-1, activates transcription of UPR-responsive genes (2-4).Synonyms: ATF-6, Activating transcription factor 6 alpha, Cyclic AMP-dependent transcription factor ATF-6 alpha, cAMP-dependent transcription factor ATF-6 alpha
Gene ID:	22926
NCBI Accession:	<a href="#">NP_031374</a>
UniProt:	<a href="#">P18850</a>
Pathways:	<a href="#">ER-Nucleus Signaling</a> , <a href="#">Unfolded Protein Response</a>

## Application Details

Application Notes:	ELISA. Western Blot: ATF6 antibody can be used for the detection of ATF6 at 0.5 - 1 µg/mL. Immunocytochemistry. Other applications not tested. Optimal dilutions are dependent on conditions and should be determined by the user.
Restrictions:	For Research Use only

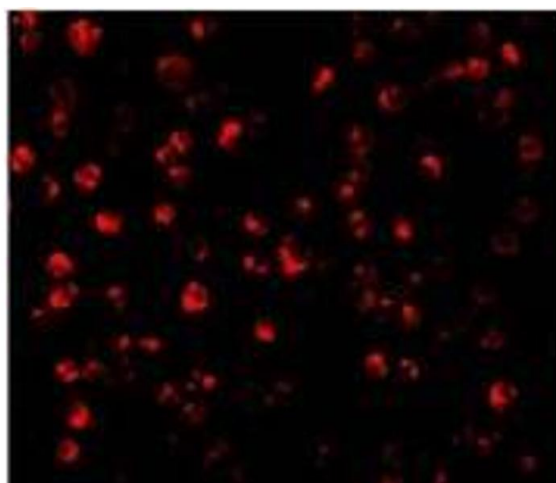
## Handling

Buffer:	PBS containing 0.02 % Sodium Azide as preservative
Preservative:	Sodium azide
Precaution of Use:	This product contains sodium azide: a POISONOUS AND HAZARDOUS SUBSTANCE which should be handled by trained staff only.
Handling Advice:	Avoid repeated freezing and thawing.
Storage:	4 °C/-20 °C
Storage Comment:	Store undiluted at 2-8 °C for one month or (in aliquots) at -20 °C for longer.



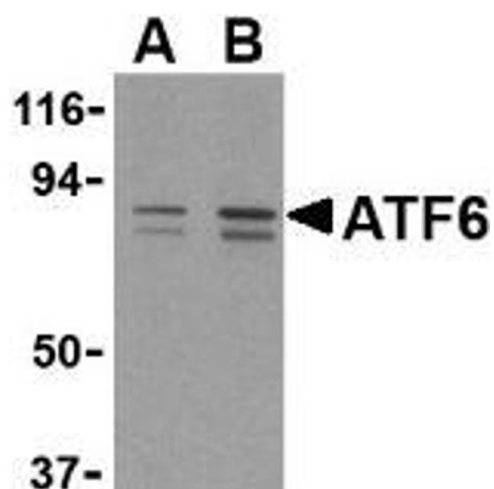
#### Immunofluorescence

**Image 1.** Immunocytochemical staining of MCF7 cells using AP30088PU-N ATF6 antibody at 10 µg/ml.



#### Immunofluorescence

**Image 2.** Immunofluorescence of ATF6 in MCF7 cells with this product atF6 antibody at 10 µg/ml.



#### Western Blotting

**Image 3.** Western blot analysis of ATF6 in MCF7 cell lysate with this product atF6 antibody at (A) 0.5 and (B) 1 µg/ml.