

Datasheet for ABIN499407

**anti-BANF1 antibody (C-Term)****2** Images[Go to Product page](#)

## Overview

Quantity:	0.1 mg
Target:	BANF1
Binding Specificity:	C-Term
Reactivity:	Human, Mouse
Host:	Rabbit
Clonality:	Polyclonal
Conjugate:	This BANF1 antibody is un-conjugated
Application:	Western Blotting (WB), Immunofluorescence (IF), Enzyme Immunoassay (EIA)

## Product Details

Immunogen:	BANF1 antibody was raised against a 15 amino acid peptide from near the carboxy terminus of human BANF1.
Isotype:	IgG
Specificity:	This antibody reacts to BANF1.
Purification:	Affinity chromatography purified via peptide column

## Target Details

Target:	BANF1
Alternative Name:	BANF1 ( <a href="#">BANF1 Products</a> )
Background:	Barrier-to-autointegration factor 1 (BANF1) is a conserved chromatin protein that non-

## Target Details

specifically binds double-stranded DNA. BANF1 also interacts with a family of nuclear proteins that include LAP2, emerin, and MAN1. It is also a host cell component of retroviral pre-integration complexes (PICs), including that of HIV. BANF1 will bind to p55 Gag (the structural precursor of HIV-1 virions) as well as its cleaved product matrix. In addition to being a host cell component of the PIC, it is thought that BANF1 is also present at low levels in incoming virions, and thus might contribute to the assembly or activity of HIV-1 PICs through direct binding to matrix as well as DNA. Despite its predicted molecular weight, BANF1 often migrates at a higher size in SDS-PAGE. Synonyms: BAF, BCRG1, Barrier-to-autointegration factor, Breakpoint Cluster Region Protein 1

Gene ID: 8815

UniProt: [O75531](#)

## Application Details

Application Notes: ELISA. Western Blot: BANF1 antibody can be used for detection of BANF1 at 0.5 - 1 µg/mL. Immunofluorescence. Other applications not tested. Optimal dilutions are dependent on conditions and should be determined by the user.

Restrictions: For Research Use only

## Handling

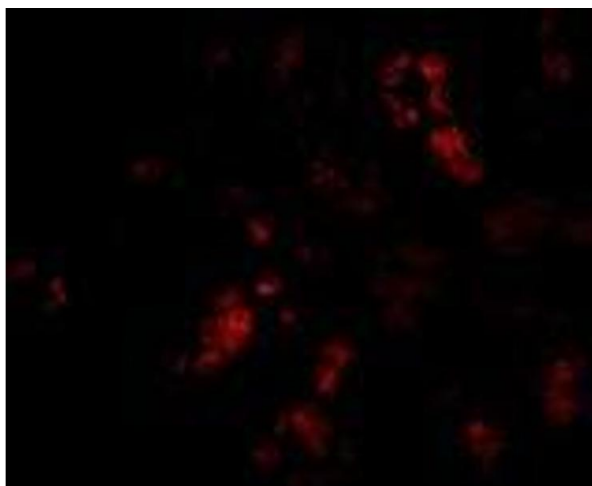
Buffer: PBS containing 0.02 % sodium azide.

Preservative: Sodium azide

Precaution of Use: This product contains sodium azide: a POISONOUS AND HAZARDOUS SUBSTANCE which should be handled by trained staff only.

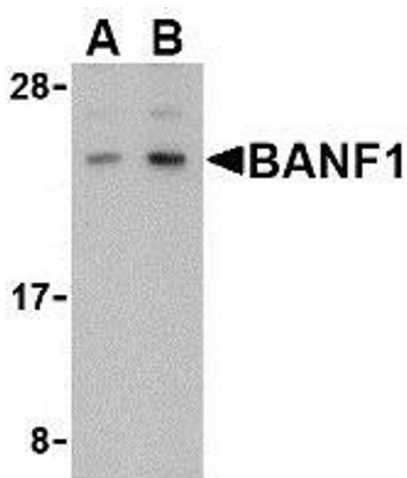
Storage: 4 °C

Storage Comment: Store the antibody undiluted at 2-8 °C.



#### Immunofluorescence

**Image 1.** Immunofluorescence of BANF1 in human kidney tissue with AP30118PU-N BANF1 antibody at 20 µg/ml.



#### Western Blotting

**Image 2.** Western blot analysis of BANF1 in human kidney tissue lysate with AP30118PU-N BANF1 antibody at (A) 0.5 and (B) 1 µg/ml.