

Datasheet for ABIN499417
anti-BCAP31 antibody (C-Term)



[Go to Product page](#)

2 Images

Overview

Quantity:	0.1 mg
Target:	BCAP31
Binding Specificity:	C-Term
Reactivity:	Human, Mouse, Rat
Host:	Rabbit
Clonality:	Polyclonal
Conjugate:	This BCAP31 antibody is un-conjugated
Application:	Western Blotting (WB), Immunohistochemistry (Paraffin-embedded Sections) (IHC (p)), Enzyme Immunoassay (EIA)

Product Details

Immunogen:	Human BAP31 (C-Terminus) Peptide
Isotype:	IgG
Specificity:	BAP31 antibody was raised against a 17 amino acid peptide from near the carboxy terminus of human BAP31.
Purification:	Affinity chromatography purified via peptide column

Target Details

Target:	BCAP31
Alternative Name:	BCAP31 / BAP31 (BCAP31 Products)

Target Details

Background: Bap31 and the related protein Bap29 are endoplasmic reticulum (ER) and ER-vesicle membrane proteins and members of the B-cell receptor-associated protein family (1,2). These two proteins are highly homologous and can form homo- and heterodimers. Bap31 is thought to be involved in the intracellular trafficking of several molecules such as MHC Class I molecules and CD11b/CD18 (3,4). It may also play a role in the initiation of ER stress-induced apoptosis through its association with caspase-8 via a death effector domain in its cytoplasmic tail, possibly through the promotion of membrane fragmentation and the release of cytochrome c from mitochondria (5). Bap31 itself contains two caspase cleavage sites and is cleaved during apoptosis. The p20 fragment of Bap31, when expressed ectopically, is also a potent inducer cell death (5).
Synonyms: 6C6-AG tumor-associated antigen, B-cell receptor-associated protein 31, BCR-associated protein Bap31, DXS1357E, Protein CDM, p28 Bap31

Gene ID: 10134

NCBI Accession: [NP_005736](#)

UniProt: [P51572](#)

Pathways: [Positive Regulation of Endopeptidase Activity](#)

Application Details

Application Notes: ELISA. Western Blot. BAP31 antibody can be used for the detection of BAP31 at 0.5 - 1 µg/mL. Immunohistochemistry. Other applications not tested. Optimal dilutions are dependent on conditions and should be determined by the user.

Restrictions: For Research Use only

Handling

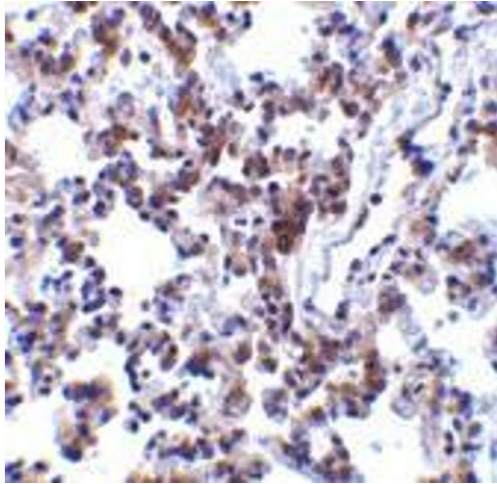
Buffer: PBS containing 0.02 % sodium azide.

Preservative: Sodium azide

Precaution of Use: This product contains sodium azide: a POISONOUS AND HAZARDOUS SUBSTANCE which should be handled by trained staff only.

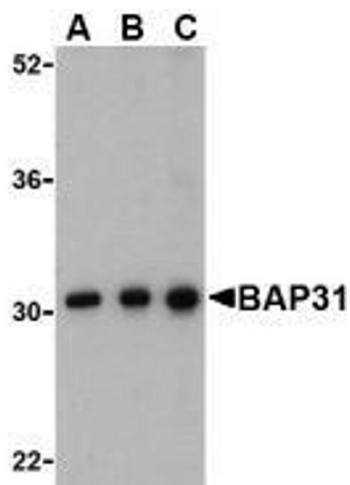
Storage: 4 °C

Storage Comment: Store the antibody undiluted at 2-8 °C.



Immunohistochemistry (Paraffin-embedded Sections)

Image 1. Immunohistochemistry of BAP31 in rat lung tissue with BAP31 antibody at 2 $\mu\text{g}/\text{ml}$.



Western Blotting

Image 2. Western blot analysis of BAP31 in Ramos cell lysate with AP30123PU-N BAP31 antibody at (A) 0.5, (B) 1 and (C) 2 $\mu\text{g}/\text{ml}$.