

Datasheet for ABIN499451
anti-BCL2A1 antibody (C-Term)[Go to Product page](#)

2 Images

Overview

Quantity:	0.1 mg
Target:	BCL2A1
Binding Specificity:	C-Term
Reactivity:	Human, Mouse
Host:	Rabbit
Clonality:	Polyclonal
Conjugate:	This BCL2A1 antibody is un-conjugated
Application:	Western Blotting (WB), Immunohistochemistry (Paraffin-embedded Sections) (IHC (p)), Enzyme Immunoassay (EIA)

Product Details

Immunogen:	Bfl-1 antibody was raised against a 14 amino acid peptide from near the carboxy terminus of human Bfl-1.
Isotype:	IgG
Specificity:	This antibody reacts to BFL-1.
Purification:	Affinity chromatography purified via peptide column

Target Details

Target:	BCL2A1
Abstract:	BCL2A1 Products

Target Details

Background: Apoptosis plays a major role in normal organism development, tissue homeostasis, and removal of damaged cells and is caused by caspase activation. Proteins that comprise the Bcl-2 family appear to control the activation of these enzymes. One such member is multi-domain antiapoptotic protein Bfl-1, which is overexpressed in stomach and other cancers. Bfl-1 can interact with Bax and suppress apoptosis by inhibiting the release of cytochrome c and caspase-3 activation. It is upregulated in cisplatin-resistant human bladder tumor, suggesting that its expression may be important for cisplatin resistance and inhibition of apoptosis in cancer cells. At least two isoforms of Bfl-1 are known to exist. Presumably due to post-translational modifications, Bfl-1 is often observed at higher molecular weight in SDS-PAGE than its predicted molecular weight would suggest. Synonyms: BCL2A1, BCL2L5, BFL1, Bcl-2-like protein 5, Bcl-2-related protein A1, GRS, HBPA1, Hemopoietic-specific early response protein, Protein BFL-1

Gene ID: 597

NCBI Accession: [NP_004040](#)

UniProt: [Q16548](#)

Application Details

Application Notes: ELISA. Western Blot. Immunohistochemistry.
Other applications not tested.
Optimal dilutions are dependent on conditions and should be determined by the user.

Restrictions: For Research Use only

Handling

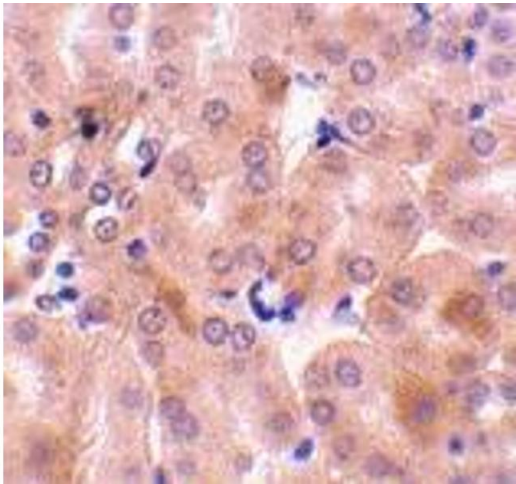
Buffer: PBS containing 0.02 % sodium azide.

Preservative: Sodium azide

Precaution of Use: This product contains sodium azide: a POISONOUS AND HAZARDOUS SUBSTANCE which should be handled by trained staff only.

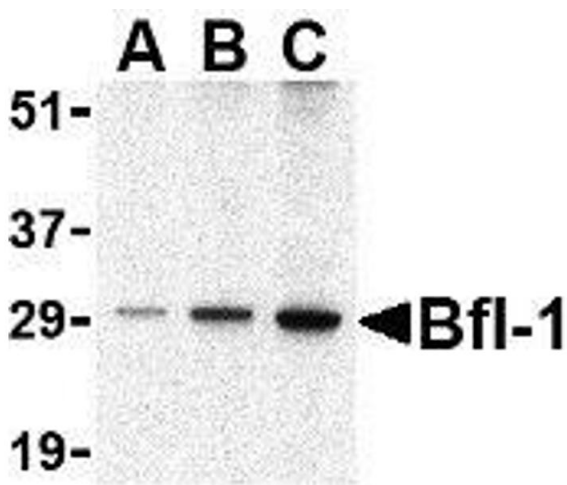
Storage: 4 °C

Storage Comment: Store the antibody undiluted at 2-8 °C.



Immunohistochemistry (Paraffin-embedded Sections)

Image 1. Immunohistochemistry of Bfl-1 in mouse kidney tissue with Bfl-1 antibody at 10 µg/ml.



Western Blotting

Image 2. Western blot analysis of Bfl-1 in human kidney tissue lysate with AP30142PU-N Bfl-1 antibody at (A) 0.5, (B) 1 and (C) 2 µg/ml.