



[Go to Product page](#)

Datasheet for ABIN499455
anti-BICD1 antibody (C-Term)

2 Images

Overview

| | |
|----------------------|--|
| Quantity: | 0.1 mg |
| Target: | BICD1 |
| Binding Specificity: | C-Term |
| Reactivity: | Human, Mouse, Rat |
| Host: | Rabbit |
| Clonality: | Polyclonal |
| Conjugate: | This BICD1 antibody is un-conjugated |
| Application: | Western Blotting (WB), Immunofluorescence (IF), Enzyme Immunoassay (EIA) |

Product Details

| | |
|---------------|--|
| Immunogen: | BICD1 antibody was raised against a 15 amino acid peptide from near the carboxy terminus of human BICD1. |
| Isotype: | IgG |
| Specificity: | This antibody reacts to BICD1. This antibody will only recognize the larger isoform. |
| Purification: | Affinity chromatography purified via peptide column |

Target Details

| | |
|-------------------|---|
| Target: | BICD1 |
| Alternative Name: | BICD1 (BICD1 Products) |
| Background: | BICD1 was initially identified as the human homolog to Drosophila Bicaudal-D protein that |

Target Details

forms part of the cytoskeleton and mediates the correct sorting of mRNAs for oocyte- and axis-determining factors during oogenesis. BICD1 can bind to dynein-dynactin and co-localizes with Rab6A on the trans-Golgi network and cytoplasmic vesicles, suggesting BICD1 regulates COPI-independent Golgi-ER transport. BICD1 will also interact with Rab6B, a Rab6 isoform that is expressed primarily in brain. Live cell imaging showed bi-directional movement of Rab6B structures in SK-N-SH neurites, indicating that BICD1 is involved in the Rab6B regulation of retrograde cargo transport in neuronal cells. At least two isoforms of BICD1 are known to exist. Synonyms: Bic-D1, Protein bicaudal D homolog 1

| | |
|-----------------|---|
| Gene ID: | 636 |
| NCBI Accession: | NP_001705 |
| UniProt: | Q96G01 |
| Pathways: | Ribonucleoprotein Complex Subunit Organization , Regulation of G-Protein Coupled Receptor Protein Signaling , Maintenance of Protein Location |

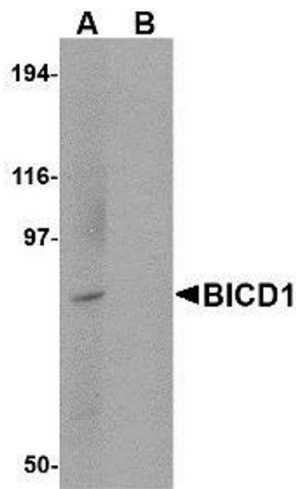
Application Details

| | |
|--------------------|---|
| Application Notes: | ELISA. Western Blot: BICD1 antibody can be used for detection of BICD1 at 0.5 - 1 µg/mL. Immunocytochemistry. Other applications not tested. Optimal dilutions are dependent on conditions and should be determined by the user. |
|--------------------|---|

| | |
|---------------|-----------------------|
| Restrictions: | For Research Use only |
|---------------|-----------------------|

Handling

| | |
|--------------------|--|
| Buffer: | PBS containing 0.02 % sodium azide. |
| Preservative: | Sodium azide |
| Precaution of Use: | This product contains sodium azide: a POISONOUS AND HAZARDOUS SUBSTANCE which should be handled by trained staff only. |
| Storage: | 4 °C |
| Storage Comment: | Store the antibody undiluted at 2-8 °C. |



Western Blotting

Image 1. Western blot analysis of BICD1 in Daudi cell lysate with AP30144PU-N BICD1 antibody at 1 µg/ml in (A) the absence and (B) the presence of blocking peptide.



Immunofluorescence

Image 2. Immunocytochemistry of BICD1 in Daudi cells with AP30144PU-N BICD1 antibody at 2.5 µg/ml.