

Datasheet for ABIN499459
anti-BICD2 antibody (Center)



[Go to Product page](#)

1 Image

Overview

Quantity:	0.1 mg
Target:	BICD2
Binding Specificity:	Center
Reactivity:	Human, Mouse, Rat
Host:	Rabbit
Clonality:	Polyclonal
Conjugate:	This BICD2 antibody is un-conjugated
Application:	Western Blotting (WB), Enzyme Immunoassay (EIA)

Product Details

Immunogen:	BICD2 antibody was raised against a 14 amino acid peptide from near the center of human BICD2.
Isotype:	IgG
Specificity:	This antibody reacts to BICD2. This BICD2 antibody will not cross-react with BICD1.
Purification:	Affinity chromatography purified via peptide column

Target Details

Target:	BICD2
Alternative Name:	BICD2 (BICD2 Products)
Background:	BICD2 is the second human homolog discovered to the Drosophila Bicaudal-D protein that

Target Details

forms part of the cytoskeleton and mediates the correct sorting of mRNAs for oocyte- and axis-determining factors during oogenesis. Similar to the highly homologous protein BICD1, BICD2 can bind to dynein-dynactin complex, primarily through the dynamitin subunit of dynactin. The C-terminus of BICD2 targets the protein to the Golgi complex while the N-terminal domain of BICD2 co-immunoprecipitates with cytoplasmic dynein, suggesting BICD2 plays a role in the dynein-dynactin interaction on the surface of membranous organelles. Mice engineered to overexpress the BICD2 amino terminal domain in neurons developed amyotrophic lateral sclerosis (ALS)-like features such as Golgi fragmentation, neurofilament swelling in proximal axons, etc., suggesting that impaired dynein/dynactin function may explain some of the pathological features observed in ALS patients. Synonyms: Bic-D2, KIAA0699, Protein bicaudal D homolog 2

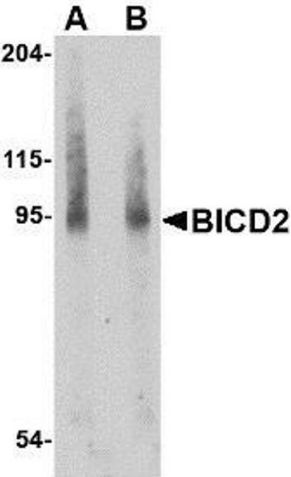
Gene ID:	23299
UniProt:	Q8TD16
Pathways:	Maintenance of Protein Location

Application Details

Application Notes:	ELISA. Western Blot: BICD2 antibody can be used for detection of BICD2 at 1 - 2 µg/mL. Other applications not tested. Optimal dilutions are dependent on conditions and should be determined by the user.
Restrictions:	For Research Use only

Handling

Buffer:	PBS containing 0.02 % sodium azide.
Preservative:	Sodium azide
Precaution of Use:	This product contains sodium azide: a POISONOUS AND HAZARDOUS SUBSTANCE which should be handled by trained staff only.
Storage:	4 °C
Storage Comment:	Store the antibody undiluted at 2-8 °C.



Western Blotting

Image 1. Western blot analysis of BICD2 in A549 cell lysate with AP30146PU-N BICD2 antibody at (A) 1 and (B) 2 μ g/ml.