

Datasheet for ABIN499469

## anti-BIM antibody (Intermediate Domain 2)

### 2 Images



[Go to Product page](#)

### Overview

Quantity:	0.1 mg
Target:	BIM (BCL2L11)
Binding Specificity:	Intermediate Domain 2
Reactivity:	Human, Mouse, Rat
Host:	Rabbit
Clonality:	Polyclonal
Conjugate:	This BIM antibody is un-conjugated
Application:	Western Blotting (WB), Immunofluorescence (IF), Enzyme Immunoassay (EIA)

### Product Details

Immunogen:	Human Bim (Intermediate Domain 2) Peptide
Isotype:	IgG
Specificity:	Bim antibody was raised against a peptide corresponding to amino acids near the center of Bim.
Purification:	Affinity chromatography purified via peptide column

### Target Details

Target:	BIM (BCL2L11)
Abstract:	<a href="#">BCL2L11 Products</a>
Background:	Members in the Bcl-2 family are critical regulators of apoptosis by either inhibiting or promoting

## Target Details

cell death. Bcl-2 homology 3 (BH3) domain is a potent death domain. BH3 domain containing pro-apoptotic proteins, including Bad, Bax, Bid, Bik, and Hrk, form a growing subclass of the Bcl-2 family. A novel BH3 domain containing protein was recently identified and designated Bim or BOD in human, mouse and rat (1,2). Bim/BOD interacts with diverse members in the pro-survival Bcl-2 sub-family including Bcl-2, Bcl-xL and Bcl-w. Bim/BOD induces apoptosis. The messenger RNA of Bim is ubiquitously expressed in multiple tissues and cell lines (1,2).Synonyms: BCL2L11, BIM, Bcl2-L-11, Bcl2-interacting mediator of cell death, BimEL, BimL, BimS

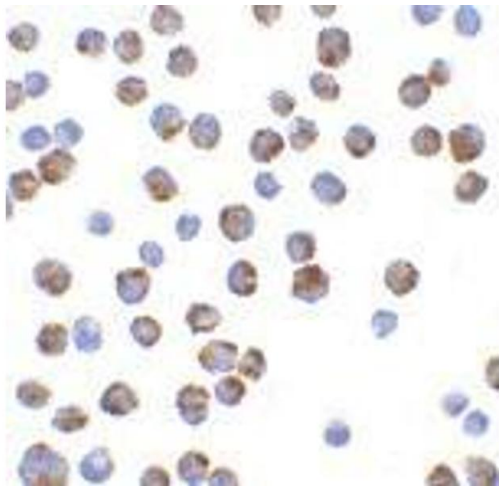
Gene ID:	10018
NCBI Accession:	<a href="#">NP_619527</a>
UniProt:	<a href="#">O43521</a>
Pathways:	<a href="#">PI3K-Akt Signaling</a> , <a href="#">Neurotrophin Signaling Pathway</a> , <a href="#">Tube Formation</a> , <a href="#">Positive Regulation of Endopeptidase Activity</a>

## Application Details

Application Notes:	ELISA. Western Blot: Bim antibody can be used for detection of Bim at 2.5 µg/mL. Immunocytochemistry. Other applications not tested. Optimal dilutions are dependent on conditions and should be determined by the user.
Restrictions:	For Research Use only

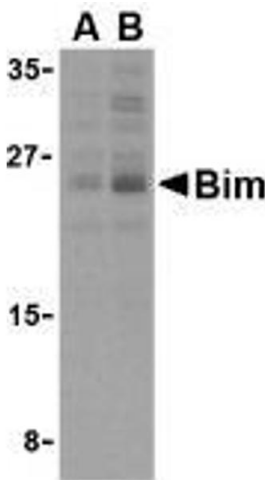
## Handling

Buffer:	PBS containing 0.02 % sodium azide.
Preservative:	Sodium azide
Precaution of Use:	This product contains sodium azide: a POISONOUS AND HAZARDOUS SUBSTANCE which should be handled by trained staff only.
Storage:	4 °C
Storage Comment:	Store the antibody undiluted at 2-8 °C.



Immunofluorescence

**Image 1.** Immunocytochemistry of BIM in K562 cells with AP30151PU-N Bim antibody at 10 µg/ml.



Western Blotting

**Image 2.** Western blot analysis of Bim in K562 cell lysates with AP30151PU-N Bim antibody (IN2) at (A) 2.5 and (B) 5 µg/ml.