

Datasheet for ABIN499471
anti-PTRH2 antibody (N-Term)

2 Images

[Go to Product page](#)

Overview

Quantity:	0.1 mg
Target:	PTRH2
Binding Specificity:	N-Term
Reactivity:	Human, Mouse, Rat
Host:	Rabbit
Clonality:	Polyclonal
Conjugate:	This PTRH2 antibody is un-conjugated
Application:	Western Blotting (WB), Immunofluorescence (IF), Enzyme Immunoassay (EIA)

Product Details

Immunogen:	Human Bit1 / Bcl-2 inhibitor of transcription 1 / Peptidyl-tRNA hydrolase 2 (N-Terminus) Peptide
Isotype:	IgG
Specificity:	Bit1 antibody was raised against a 15 amino acid peptide from near the amino-terminus of human Bit1.
Purification:	Affinity chromatography purified via peptide column

Target Details

Target:	PTRH2
Alternative Name:	PTRH2 / BIT1 (PTRH2 Products)
Background:	Adhesion to extracellular matrix regulates cell survival through both integrin engagement and

Target Details

appropriate cell spreading. Anoikis is the molecular mechanism of apoptosis induced by integrin detachment (1). Bit1 (Bcl-2 inhibitor of transcription 1) was recently identified as being involved in this process (2). Bit1 is a mitochondrial protein that is released into the cytoplasm upon onset of apoptosis where it forms a complex with AES, a small Groucho/transducin-like enhancer of split (TLE) protein and induces caspase-independent apoptosis. Both AES and TLE proteins are transcriptional co-repressors that play important roles in neurogenesis, segmentation, and sex determination (3). It has been suggested that Bit1-AES complexes turn off a survival-promoting gene transcription program controlled by TLE (2). Interestingly, apoptosis of cells transfected with Bit1 and AES could be inhibited if the cells were allowed to attach to fibronectin through the $\alpha 5 \beta 1$ integrin suggesting that the Bit1-AES pathway contributing to anoikis is regulated by integrins, and in particular, the $\alpha 5 \beta 1$ integrin (2). Synonyms: CGI-147, PTH2, Peptidyl-tRNA hydrolase 2 mitochondrial

Gene ID: 51651

NCBI Accession: [NP_057161](#)

UniProt: [Q9Y3E5](#)

Application Details

Application Notes: ELISA. Western Blot: Bit1 antibody can be used for the detection of Bit1 at 1 - 2 $\mu\text{g/mL}$.
Immunocytochemistry.
Other applications not tested.
Optimal dilutions are dependent on conditions and should be determined by the user.

Restrictions: For Research Use only

Handling

Buffer: PBS containing 0.02 % sodium azide.

Preservative: Sodium azide

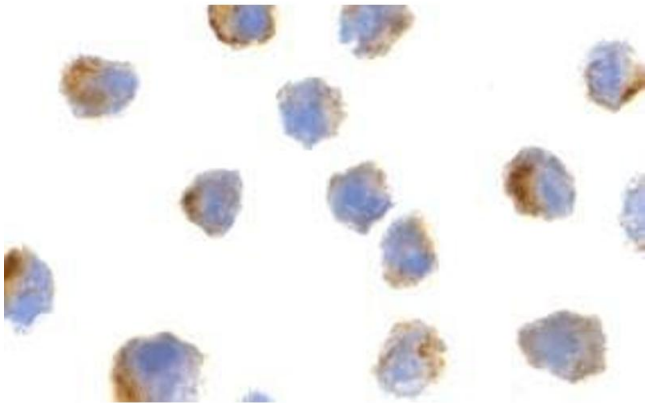
Precaution of Use: This product contains sodium azide: a POISONOUS AND HAZARDOUS SUBSTANCE which should be handled by trained staff only.

Storage: 4 °C

Storage Comment: Store the antibody undiluted at 2-8 °C.

Immunofluorescence

Image 1. Immunocytochemistry of Bit1 in 3T3 cells with AP30152PU-N Bit1 antibody at 2 µg/ml.



Western Blotting

Image 2. Western blot analysis of Bit1 in A-20 cell lysate with AP30152PU-N Bit1 antibody at (A) 1, (B) 2, and (C) 4 µg/ml.

