

Datasheet for ABIN499489
anti-BORA antibody (C-Term)[Go to Product page](#)

2 Images

Overview

Quantity:	0.1 mg
Target:	BORA
Binding Specificity:	C-Term
Reactivity:	Human, Mouse, Rat
Host:	Rabbit
Clonality:	Polyclonal
Conjugate:	This BORA antibody is un-conjugated
Application:	Western Blotting (WB), Immunohistochemistry (Paraffin-embedded Sections) (IHC (p)), Enzyme Immunoassay (EIA)

Product Details

Immunogen:	Bora antibody was raised against a 15 amino acid peptide from near the carboxy terminus of human Bora.
Isotype:	IgG
Specificity:	This antibody reacts to Bora.
Purification:	Affinity chromatography purified via peptide column

Target Details

Target:	BORA
Alternative Name:	Protein Aurora Borealis (BORA Products)

Target Details

Background: Bora (Protein aurora borealis) is a key activator of Aurora Related Protein Kinase A (ARK-1), which is a centrosome-associated serine/threonine kinase that regulates centrosome maturation, bipolar spindle assembly and chromosome segregation during mitosis. Bora is localized to the nucleus until mitosis is initiated, then translocates to the cytoplasm in a Cdc2 dependent manner. Activation of Cdc2 initiates the release of Bora into the cytoplasm where it can bind and activate ARK-1. PLK1 (polo-like kinase-1) interacts with Bora to control the accessibility of its activation loop for phosphorylation and activation by ARK-1. Bora and ARK-1 cooperatively activate PLK1 and control mitotic entry. Bora mutants result in multipolar spindles in mitosis identical to those observed when ARK-1 function is blocked. Thus, the ARK1-Bora-PLK1 regulatory circuit in mammalian cells elucidates a key mechanism in cell cycle regulation. At least three isoforms of Bora are known to exist. Synonyms: BORA, C13orf34, FLJ22624, HsBora

Gene ID: 79866

UniProt: [Q6PGQ7](#)

Application Details

Application Notes: ELISA. Western Blot: Bora antibody can be used for detection of Bora at 1-2 µg/mL. Immunohistochemistry. Other applications not tested. Optimal dilutions are dependent on conditions and should be determined by the user.

Restrictions: For Research Use only

Handling

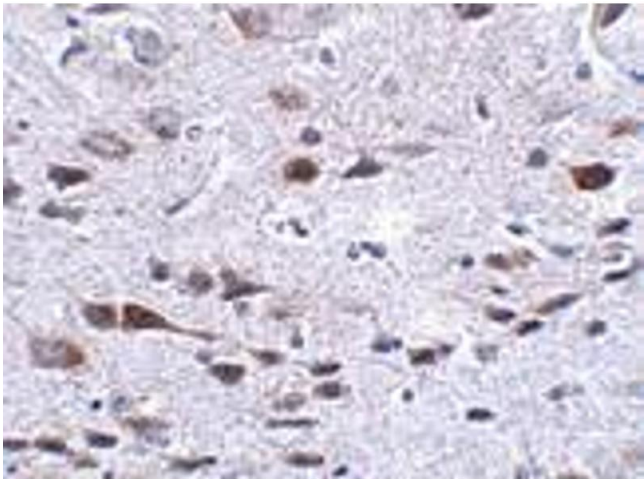
Buffer: PBS containing 0.02 % sodium azide.

Preservative: Sodium azide

Precaution of Use: This product contains sodium azide: a POISONOUS AND HAZARDOUS SUBSTANCE which should be handled by trained staff only.

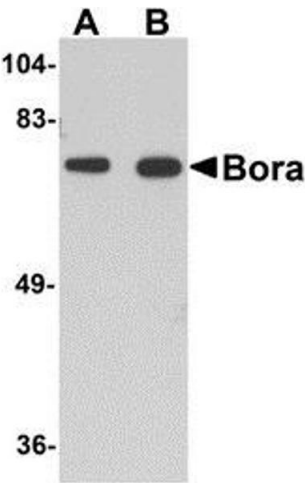
Storage: 4 °C

Storage Comment: Store the antibody undiluted at 2-8 °C.



Immunohistochemistry (Paraffin-embedded Sections)

Image 1. Immunohistochemistry of Bora in mouse brain tissue with Bora antibody at 2.5 µg/ml.



Western Blotting

Image 2. Western blot analysis of Bora in mouse brain tissue lysate with AP30161PU-N Bora antibody at (A) 1 and (B) 2 µg/ml.