

Datasheet for ABIN499491  
**anti-BORA antibody (N-Term)**[Go to Product page](#)

## 2 Images

## Overview

Quantity:	0.1 mg
Target:	BORA
Binding Specificity:	N-Term
Reactivity:	Human, Mouse, Rat
Host:	Rabbit
Clonality:	Polyclonal
Conjugate:	This BORA antibody is un-conjugated
Application:	Western Blotting (WB), Immunohistochemistry (Paraffin-embedded Sections) (IHC (p)), Enzyme Immunoassay (EIA)

## Product Details

Immunogen:	Bora antibody was raised against a 15 amino acid peptide from near the amino terminus of human Bora.
Isotype:	IgG
Specificity:	This antibody reacts to BORA.
Purification:	Affinity chromatography purified via peptide column

## Target Details

Target:	BORA
Alternative Name:	Protein Aurora Borealis ( <a href="#">BORA Products</a> )

## Target Details

**Background:** Bora (Protein aurora borealis) is a key activator of Aurora Related Protein Kinase A (ARK-1), which is a centrosome-associated serine/threonine kinase that regulates centrosome maturation, bipolar spindle assembly and chromosome segregation during mitosis. Bora is localized to the nucleus until mitosis is initiated, then translocates to the cytoplasm in a Cdc2 dependent manner. Activation of Cdc2 initiates the release of Bora into the cytoplasm where it can bind and activate ARK-1. PLK1 (polo-like kinase-1) interacts with Bora to control the accessibility of its activation loop for phosphorylation and activation by ARK-1. Bora and ARK-1 cooperatively activate PLK1 and control mitotic entry. Bora mutants result in multipolar spindles in mitosis identical to those observed when ARK-1 function is blocked. Thus, the ARK1-Bora-PLK1 regulatory circuit in mammalian cells elucidates a key mechanism in cell cycle regulation. At least three isoforms of Bora are known to exist. Synonyms: BORA, C13orf34, FLJ22624, HsBora

**Gene ID:** 79866

**UniProt:** [Q6PGQ7](#)

## Application Details

**Application Notes:** ELISA. Western Blot: Bora antibody can be used for detection of Bora at 1-2 µg/mL. Immunohistochemistry. Other applications not tested. Optimal dilutions are dependent on conditions and should be determined by the user.

**Restrictions:** For Research Use only

## Handling

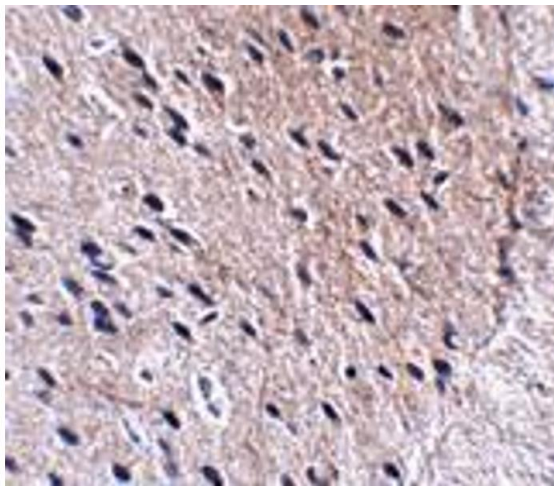
**Buffer:** PBS containing 0.02 % sodium azide.

**Preservative:** Sodium azide

**Precaution of Use:** This product contains sodium azide: a POISONOUS AND HAZARDOUS SUBSTANCE which should be handled by trained staff only.

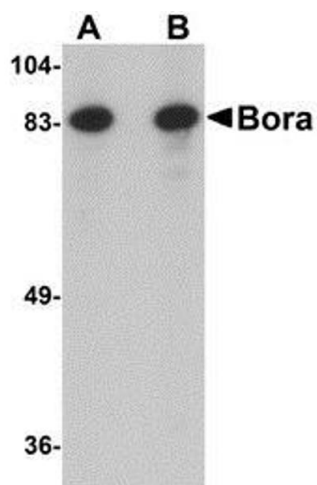
**Storage:** 4 °C

**Storage Comment:** Store the antibody undiluted at 2-8 °C.



#### Immunohistochemistry (Paraffin-embedded Sections)

**Image 1.** Immunohistochemistry of Bora in mouse brain tissue with Bora antibody at 2.5 µg/ml.



#### Western Blotting

**Image 2.** Western blot analysis of Bora in Jurkat cell lysate with AP30162PU-N Bora antibody at (A) 1 and (B) 2 µg/ml.