

Datasheet for ABIN499493
anti-HAPLN2 antibody (Center)[Go to Product page](#)

2 Images

Overview

Quantity:	0.1 mg
Target:	HAPLN2
Binding Specificity:	Center
Reactivity:	Human, Mouse, Rat
Host:	Rabbit
Clonality:	Polyclonal
Conjugate:	This HAPLN2 antibody is un-conjugated
Application:	Western Blotting (WB), Immunohistochemistry (Paraffin-embedded Sections) (IHC (p)), Immunofluorescence (IF), Enzyme Immunoassay (EIA)

Product Details

Immunogen:	BRAL1 antibody was raised against a 12 amino acid peptide from near the center of human BRAL1.
Isotype:	IgG
Specificity:	This antibody reacts to BRAL1.
Purification:	Affinity chromatography purified via peptide column

Target Details

Target:	HAPLN2
Alternative Name:	Brain Link Protein 1 / BRAL1 (HAPLN2 Products)

Target Details

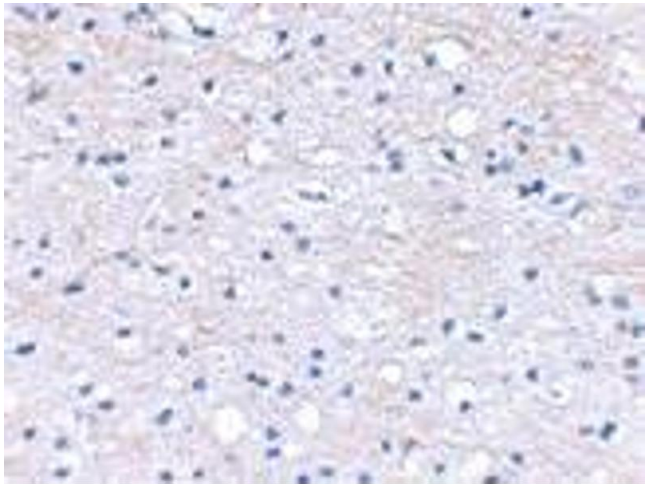
Background:	BRAL1 is a member a superfamily consisting of several highly homologous hyaluronan and proteoglycan binding link proteins. BRAL1 is predominantly expressed in brain tissue and spinal cord. Like other members in the link-module superfamily, BRAL1 contains an immunoglobulin-like fold and two proteoglycan tandem repeats (PTRs). Its mRNA expression pattern is similar to other lectican proteoglycans, suggesting that BRAL1 may act to stabilize the binding between the extracellular matrix molecule hyaluronan and brevican. Immunostaining of mouse brain showed BRAL1 expression at P20 in the white matter of the developing cerebellum and in myelinated fiber tracts in the adult brain, suggesting that expression starts when axonal myelination occurs.Synonyms: HAPLN2, Hyaluronan and proteoglycan link protein 2
Gene ID:	60484
NCBI Accession:	NP_068589
UniProt:	Q9GZV7

Application Details

Application Notes:	ELISA. Western Blot: BRAL1 antibody can be used for the detection of BRAL1 at 1 - 2 µg/mL. Immunohistochemistry. Other applications not tested. Optimal dilutions are dependent on conditions and should be determined by the user.
Restrictions:	For Research Use only

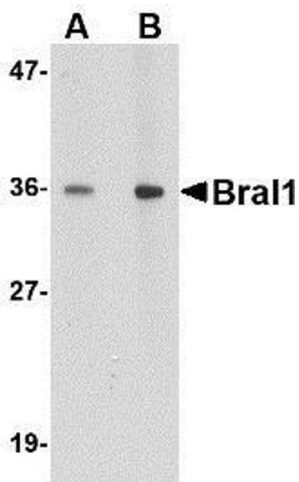
Handling

Buffer:	PBS containing 0.02 % sodium azide.
Preservative:	Sodium azide
Precaution of Use:	This product contains sodium azide: a POISONOUS AND HAZARDOUS SUBSTANCE which should be handled by trained staff only.
Storage:	4 °C
Storage Comment:	Store the antibody undiluted at 2-8 °C.



Immunohistochemistry (Paraffin-embedded Sections)

Image 1. Immunohistochemical staining of human brain tissue using AP30163PU-N BRAL1 antibody at 2.5 µg/ml.



Western Blotting

Image 2. Western blot analysis of BRAL1 in human brain tissue lysate with BRAL1 antibody at (A) 1 and (B) 2 µg/ml.