

Datasheet for ABIN499495
anti-BRCC3 antibody (N-Term)

2 Images

[Go to Product page](#)

Overview

Quantity:	0.1 mg
Target:	BRCC3
Binding Specificity:	N-Term
Reactivity:	Human, Mouse, Rat
Host:	Rabbit
Clonality:	Polyclonal
Conjugate:	This BRCC3 antibody is un-conjugated
Application:	Western Blotting (WB), Immunohistochemistry (Paraffin-embedded Sections) (IHC (p)), Enzyme Immunoassay (EIA)

Product Details

Immunogen:	BRCC36 antibody was raised against a 18 amino acid peptide from near the amino terminus of human BRCC36.
Isotype:	IgG
Specificity:	This antibody reacts to BRCC36.
Purification:	Affinity chromatography purified via peptide column

Target Details

Target:	BRCC3
Alternative Name:	BRCC3 (BRCC3 Products)

Target Details

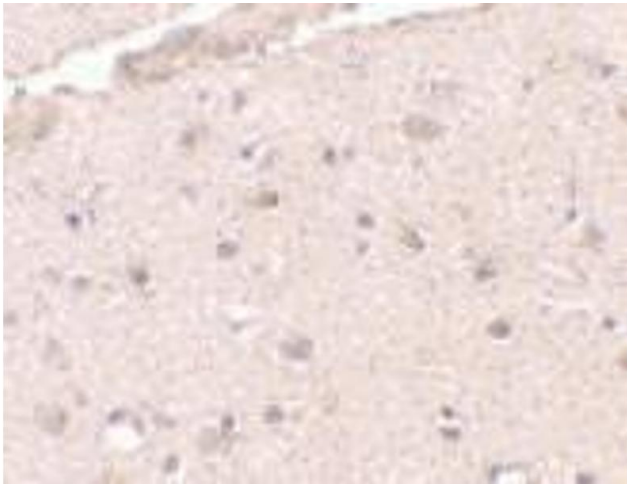
Background:	Together with the breast and ovarian predisposition proteins BRCA1 and BRCA2 and RAD51 and BRCC45, BRCC36 forms a holoenzyme complex that possesses a ubiquitin E3 ligase activity. Aberrant levels of BRCC36 were detected in sporadic breast tumors and depletion of either BRCC36 or BRCC45 by siRNA resulted in increased sensitivity to ionizing radiation and defects in the G2/M checkpoint, indicating that BRCC36 acts to enhance cellular survival following DNA damage. Recent experiments have shown that BRCC36 is essential for ionizing radiation-induced BRCA1 phosphorylation and nuclear foci formation, suggesting that BRCC36 may be an important target in the treatment of radiation-resistant breast tumors. At least two isoforms of BRCC36 are known to exist.Synonyms: BRCA1-A complex subunit BRCC36, BRCA1/BRCA2-containing complex subunit 3, BRCA1/BRCA2-containing complex subunit 36, BRCC36, BRISC complex subunit BRCC36, C6.1A, CXorf53, Lys-63-specific deubiquitinase BRCC36
Gene ID:	79184
NCBI Accession:	NP_077308
UniProt:	P46736
Pathways:	Positive Regulation of Response to DNA Damage Stimulus

Application Details

Application Notes:	ELISA. Western BLot: BRCC36 antibody can be used for detection of BRCC36 at 0.5 - 1 µg/mL. Immunohistochemistry. Other applications not tested. Optimal dilutions are dependent on conditions and should be determined by the user.
Restrictions:	For Research Use only

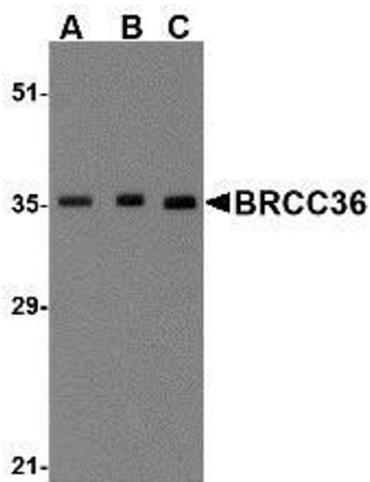
Handling

Buffer:	PBS containing 0.02 % sodium azide.
Preservative:	Sodium azide
Precaution of Use:	This product contains sodium azide: a POISONOUS AND HAZARDOUS SUBSTANCE which should be handled by trained staff only.
Storage:	4 °C
Storage Comment:	Store the antibody undiluted at 2-8 °C.



Immunohistochemistry (Paraffin-embedded Sections)

Image 1. Immunohistochemistry of BRCC36 in human brain tissue with BRCC36 antibody at 2.5 µg/ml.



Western Blotting

Image 2. Western blot analysis of BRCC36 in MCF7 cell lysate with AP30164PU-N BRCC36 antibody at (A) 0.5, (B) 1 and (C) 2 µg/ml.