



[Go to Product page](#)

Datasheet for ABIN499497  
**anti-BRE antibody (N-Term)**

2 Images

### Overview

Quantity:	0.1 mg
Target:	BRE
Binding Specificity:	N-Term
Reactivity:	Human, Mouse, Rat
Host:	Rabbit
Clonality:	Polyclonal
Conjugate:	This BRE antibody is un-conjugated
Application:	Western Blotting (WB), Immunohistochemistry (Paraffin-embedded Sections) (IHC (p)), Enzyme Immunoassay (EIA)

### Product Details

Immunogen:	BRCC45 antibody was raised against a 18 amino acid peptide from near the amino terminus of human BRCC45.
Isotype:	IgG
Specificity:	This antibody reacts to BRCC45.
Purification:	Affinity chromatography purified via peptide column

### Target Details

Target:	BRE
Alternative Name:	BRE / BRCC45 ( <a href="#">BRE Products</a> )

## Target Details

---

**Background:** BRCC45 was initially suggested to be a housekeeping protein that is highly expressed in brain and reproductive organs. Later experiments indicated BRCC45 forms a complex with the breast and ovarian predisposition proteins BRCA1 and BRCA2 as well as RAD51 and BRCC36. This complex has a ubiquitin E3 ligase activity and is thought to enhance cellular survival following DNA damage. BRCC45 has also been suggested to function as a death receptor-associated anti-apoptotic protein by inhibiting the BID-induced activation of the mitochondrial apoptotic pathway. Higher levels of BRCC45 were detected in the majority of hepatocellular carcinomas, suggesting that BRCC45 may promote tumorigenesis when overexpressed. At least three isoforms of BRCC45 are known to exist. Synonyms: BRCA1-A complex subunit BRE, BRCA1/BRCA2-containing complex subunit 45, BRCC45, BRE, Brain and reproductive organ-expressed protein

---

**Gene ID:** 9577

---

**NCBI Accession:** [NP\\_004890](#)

---

**UniProt:** [Q9NXR7](#)

---

**Pathways:** [Positive Regulation of Response to DNA Damage Stimulus](#)

## Application Details

---

**Application Notes:** ELISA. Western Blot: BRCC45 antibody can be used for detection of BRCC45 at 1 - 2 µg/mL. Immunohistochemistry. Other applications not tested. Optimal dilutions are dependent on conditions and should be determined by the user.

---

**Restrictions:** For Research Use only

## Handling

---

**Buffer:** PBS containing 0.02 % sodium azide.

---

**Preservative:** Sodium azide

---

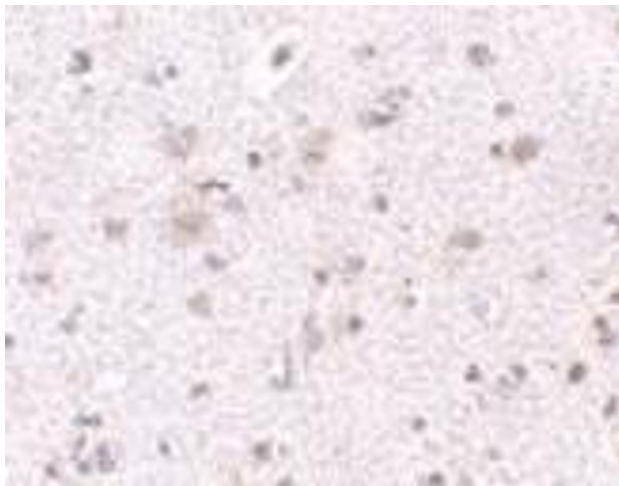
**Precaution of Use:** This product contains sodium azide: a POISONOUS AND HAZARDOUS SUBSTANCE which should be handled by trained staff only.

---

**Storage:** 4 °C

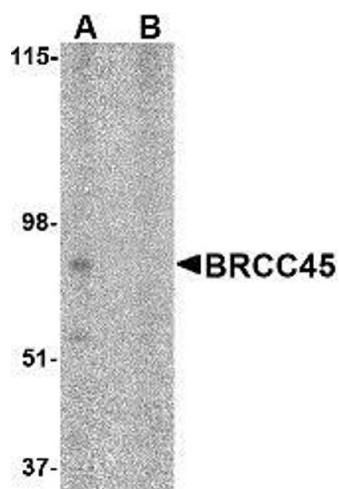
---

**Storage Comment:** Store the antibody undiluted at 2-8 °C.



#### Immunohistochemistry (Paraffin-embedded Sections)

**Image 1.** Immunohistochemistry of BRCC45 in human brain tissue with BRCC45 antibody at 2.5 µg/ml.



#### Western Blotting

**Image 2.** Western blot analysis of BRCC45 in HeLa cell lysate in (A) the absence and (B) presence of blocking peptide with AP30165PU-N BRCC45 antibody at 1 µg/ml.