

Datasheet for ABIN499521

anti-Calpain 6 antibody (C-Term)**2** Images[Go to Product page](#)

Overview

Quantity:	0.1 mg
Target:	Calpain 6 (CAPN6)
Binding Specificity:	C-Term
Reactivity:	Human, Mouse, Rat
Host:	Rabbit
Clonality:	Polyclonal
Conjugate:	This Calpain 6 antibody is un-conjugated
Application:	Western Blotting (WB), Immunohistochemistry (Paraffin-embedded Sections) (IHC (p)), Enzyme Immunoassay (EIA)

Product Details

Immunogen:	CAPN6 antibody was raised against a 18 amino acid peptide from near the carboxy terminus of human CAPN6.
Isotype:	IgG
Specificity:	This antibody reacts to CAPN6.
Purification:	Affinity chromatography purified via peptide column

Target Details

Target:	Calpain 6 (CAPN6)
Alternative Name:	Calpain-6 (CAPN6 Products)

Target Details

Background: Calpains make up a ubiquitously expressed, well-conserved family of calcium-dependent cysteine proteases. The calpain proteins are heterodimers consisting of an invariant small subunit and variable large subunits. This large subunit possesses a cysteine protease domain, and both subunits possess calcium-binding domains. Calpains have been implicated in neurodegenerative processes as their activation can be triggered by calcium influx and oxidative stress. Calpain 6 (CAPN6) is most similar to Calpain 5, the C-terminal region of CAPN6 lacks homology to the calmodulin-like domain of other vertebrate calpains. CAPN6 is thought to be involved in the regulation of microtubule dynamics and cytoskeletal organization. CAPN6 has also been recently identified as an HIV dependency factor (HDF), suggesting that CAPN6 may be an important drug target in HIV treatment. Synonyms: CALPM, CANPX, CAPN6, Calpain-like protease X-linked, Calpamodulin

Gene ID: 827

NCBI Accession: [NP_055104](#)

UniProt: [Q9Y6Q1](#)

Application Details

Application Notes: ELISA. Western Blot: CAPN6 antibody can be used for the detection of StrepII at 0.5 - 1 µg/mL. Immunohistochemistry. Other applications not tested. Optimal dilutions are dependent on conditions and should be determined by the user.

Restrictions: For Research Use only

Handling

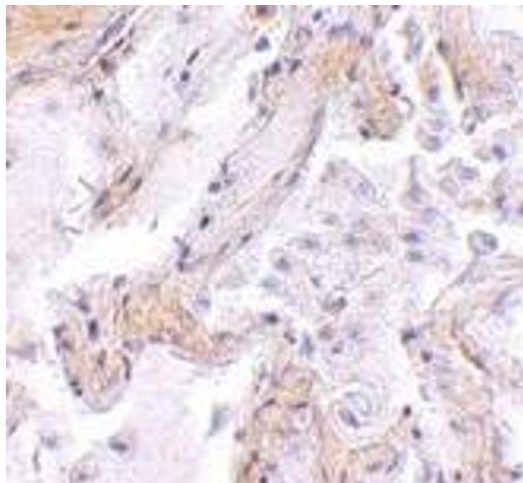
Buffer: PBS containing 0.02 % sodium azide.

Preservative: Sodium azide

Precaution of Use: This product contains sodium azide: a POISONOUS AND HAZARDOUS SUBSTANCE which should be handled by trained staff only.

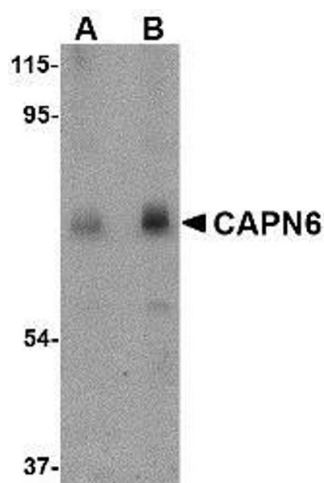
Storage: 4 °C

Storage Comment: Store the antibody undiluted at 2-8 °C.



Immunohistochemistry (Paraffin-embedded Sections)

Image 1. Immunohistochemistry of CAPN6 in human lung tissue with CAPN6 antibody at 2.5 µg/ml.



Western Blotting

Image 2. Western blot analysis of CAPN6 in rat lung tissue lysate with AP30177PU-N CAPN6 antibody at (A) 0.5 and (B) 1 µg/ml.